

M.MATE

MENTORING APPRENTICES TOWARDS EXCELLENCE

WHAT IS THE MBA MATE PROGRAM?

The Master Builders MATE (Mentoring Apprentices Towards Excellence) Program is a digital 3-month program designed to connect apprentices with a MATE (Mentor).

The aim of the MATE program is to increase the retention rate of apprentices, increase the employability and life skills of apprentices and increase the confidence and commitment to trade careers from apprentices.

A MATE will support their mentee (apprentice) with developing skills in:

- Health and Wellbeing
- Relationship Management
- Communication, including social media
- Career development

WHAT IS A MATE (MENTOR) AND HOW WILL THAT BENEFIT YOU?

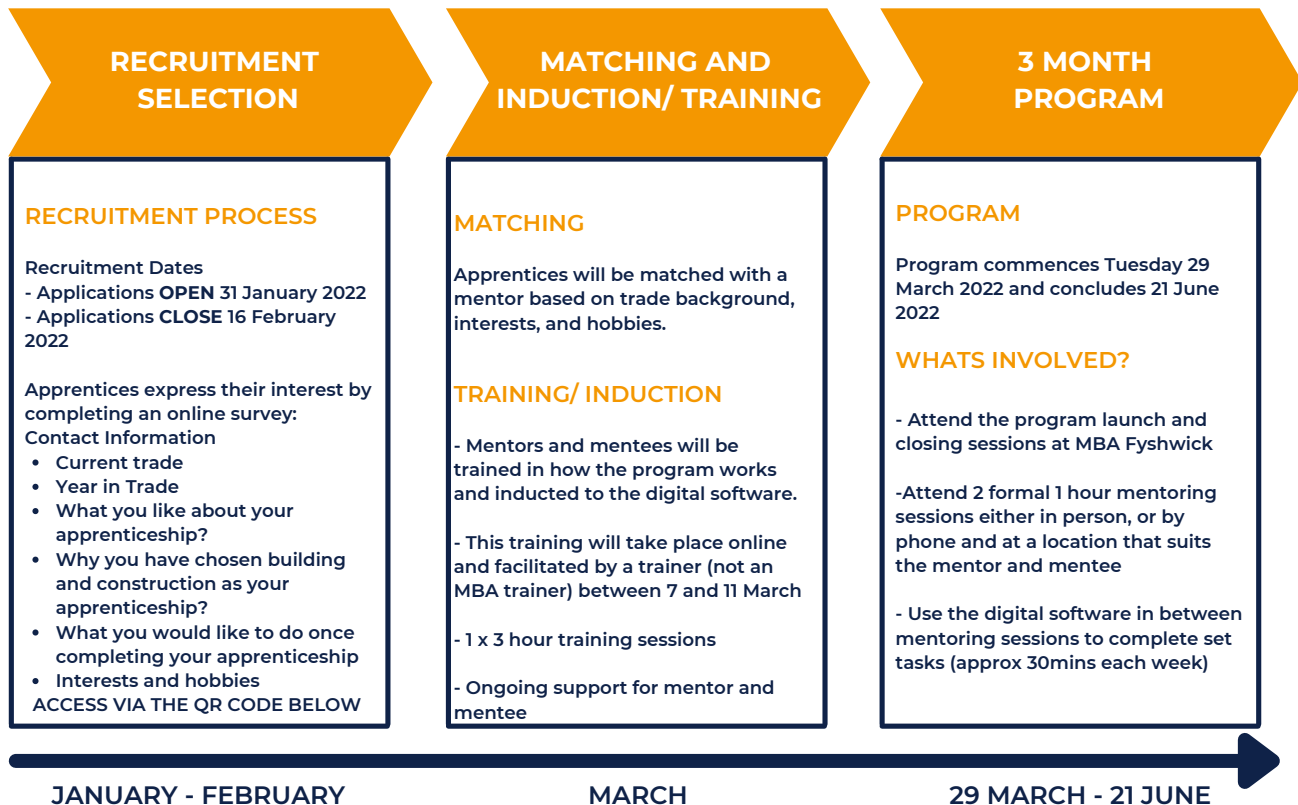
A MATE is someone that can help guide and teach new things, problem solve challenges, set career goals and be a great sounding board for any discussion topic.

This program will provide apprentices an opportunity to focus on their work, health and relationships. This program enables apprentices to create structured goal setting and learning alignment.

The outcome of this program is to provide a supportive network of people and create a MATE for life.

Mentees will be matched with a MATE as part of the recruitment process (see below)

TIMELINE OF MATE PROGRAM



COMMITMENT

COMMITMENT FOR MENTEE (APPRENTICE)

- 3 month program duration
- 4 x 1 hour face to face, or by phone check-ins with your mentor
- 30 minutes each week to absorb learning content



MENTEE SUPPORT

DIGITAL PLATFORM (APP)

- Interactive app downloaded to any device
- Learning content
- Videos
- Self Checkin
- Goal setting
- 24/7 support of mentor



OUTCOMES

OUTCOMES OF PROGRAM

- Certificate of completion
- Broadened networks in the building and construction industry
- A clearer career direction
- Retention of knowledge from mature aged workers within the industry
- A MATE for life

FOLLOW THE QR CODE TO EXPRESS YOUR INTEREST



FOR MORE INFORMATION

CONTACT MILA BARTHOLOMEW
 PH: (02) 6175 5900
 E: MBARTHOLOMEW@MBA.ORG.AU
 W: WWW.MBA.ORG.AU/MATEPROGRAM

APPLICATIONS CLOSE:
 WEDNESDAY, 16 FEBRUARY 2022