



winning Projects[®]

MASTER BUILDERS ASSOCIATION OF THE ACT

Vibe^{HOTEL}

2016 PROJECT OF THE YEAR
BY CONSTRUCTION CONTROL





www.chasegroupact.com.au

153/41 Eastlake Pde Kingston ACT 2604 | PO Box 4270 Kingston ACT 2604 | P 02 6239 1288 | F 02 6239 1122 | E info@chasegroupact.com.au

Lic No: 20131004 ACN: 165180432



Award Winning Recycling and Safety Systems

Brema Group specialises in completing projects to the highest standard with an emphasis on safety, program, budget and sustainable practices.

Residential, Rural, Commercial & Industrial Projects.
Earthworks, Civil Works & Demolition.

Phone: 02 6262 9772

Email: info@bremagroup.com.au | Web: www.bremagroup.com.au

Office: 36 Aurora Avenue, Queanbeyan NSW 2620



Licence No. 20101443 (ACT) 210111 (NSW)
ACN: 196 059 767

The smartest tool on site.

How do we manage our sites tomorrow? Having the ability to know who's on site, when it's important. Keeping on top of inductions from your pocket. Evacuating the entire site with the press of a button.

SignOnSite is more than a site management platform. It's the beginning of a new way. A safer way. And it's all from your smartphone.

Did we mention. It'll sign you on automatically. It's safety, made simple.

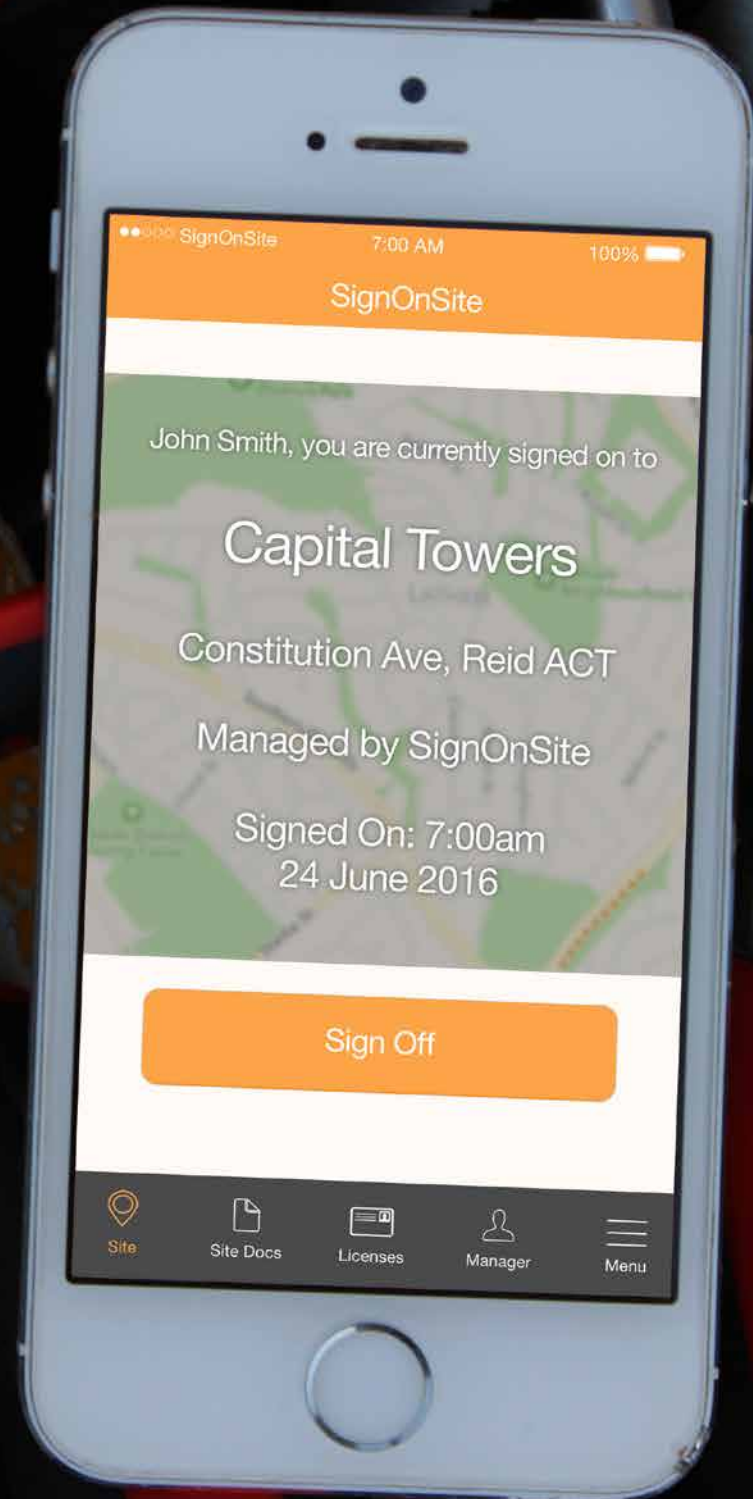
"It's a huge benefit to have the information on hand."

Simon Agnello

Director, Division Manager, Manteena.



signonsite.com.au/mba



05 WELCOME
10 WINNERS
50 FINALISTS

WINNING PROJECTS IS PUBLISHED BY
THE MASTER BUILDERS ASSOCIATION OF THE ACT.



MASTER BUILDERS ASSOCIATION OF THE ACT

DIRECTOR COMMERCIAL OPERATIONS
DAVID LEITCH

GRAPHIC DESIGN
RICHARD BOYCE

EVENTS CO-ORDINATOR
ELISSA CAMPBELL

.....

HUB COMMUNICATIONS

SALES & MARKETING
CHRIS O'BRIEN

OFFICE MANAGER
JUANITA LEE

GRAPHIC DESIGN (ADVERTISING)
MICHELLE DONALDSON / LAURA JAMES

© This publication is copyright. No part of it may be reproduced, stored in a retrieval system or transmitted in any form or by any means including electronic, mechanical photocopy, recording or otherwise without the permission of the Master Builders Association of the ACT. Disclaimer: readers are advised that the Master Builders Association of the ACT cannot be held responsible for the accuracy of statements made in advertising and editorial, nor the quality of the goods or services advertised. Opinions expressed throughout the publication are the contributors own and do not necessarily reflect the views or policy of the Master Builders Association of the ACT.

—

WE ARE PROUD TO SPONSOR
THE 2016 MASTER BUILDERS
AND CBUS EXCELLENCE IN BUILDING
AWARDS, RECOGNISING PROJECTS
AND PROGRESS IN THE A.C.T.

—

Congratulations



*Cbus is Australia's biggest
industry super fund for
the building, construction
and allied industries.*

CONTACT CBUS SUPER FUND:



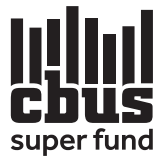
1300 361 784



www.cbussuper.com.au



cbusenq@cbusmail.com.au



Read the relevant Cbus Product Disclosure Statement to decide whether Cbus is right for you. Contact 1300 361 784 or visit www.cbussuper.com.au for a copy. Cbus' Trustee: United Super Pty Ltd ABN 46 006 261 623
AFSL 233792 Cbus ABN 75 493 363 262.



WELCOME

Celebrating our 'chook sheds'.

Get the envelopes and stamps out. We're going to send a copy of Winning Projects 2016 to every person in ACT Government procurement.

There can be no better reminder to government of the amazing capacity of our local industry than a read through of these pages. The winners in every category could easily compete on a national scale delivering excellence and real passion in all that they do.

Yet a quick count reveals a disappointing statistic. Of the 38 projects being recognised for excellence only two have an ACT government client.

It seems private clients have decidedly greater trust in our local industry's capacity to deliver than our own government. As you will see in these pages, that trust is extremely well founded. Year after year clients sing the praises of local contractors, often contrasting their experiences with external providers.

Even when we can demonstrate huge capacity to deliver, such as the ongoing and award winning work of local contractors on Canberra Hospital, we still fail to gain the attention of the decision makers on major projects.

Frustration with this is growing fast.

We had a disturbing discovery earlier this year in a secret MoU the government had signed with Unions ACT. The MoU gives the CFMEU a direct role in deciding government construction tenders including "contributing to the decision making process not only in appearance but in fact..."

We're told that the MoU has existed in various forms for the past 10 years with no impact on tenders. But this was around the same time the ACT Government began awarding major tenders almost exclusively to outside contractors with backroom union deals.

If the MoU has no impact on tenders, why not rip it up? The reality is that the MoU is a payback for union financial and political support. Today this formal written support of union demands in government procurement comes at huge cost to the taxpayer and our industry.

We've seen it on light rail where local contractors are excluded because they refused union demands. We are seeing it on the Canberra University project with reports that local contractors are being denied work because of union deals.

The projects in these pages prove we have the capacity, expertise and experience to deliver any project that Canberra needs. The evidence puts to shame recent CFMEU claims in the national media dismissing our industry as builders of 'chook sheds'.

We need action from our government that repudiates the union's shameful attack on our industry and returns us to a competitive tendering process where local firms can be recognised and rewarded for their capacity to deliver. All we ask is the opportunity to compete. In return we will deliver outstanding value for the ACT Taxpayer and our broader community.



KIRK CONINGHAM OAM

EXECUTIVE DIRECTOR,
MASTER BUILDERS ASSOCIATION OF THE ACT

4 Reasons why you should use **Asset Construction Hire**

It's no secret ACH is now the market leader in construction equipment hire in the ACT region. This success is largely due to the commitment found in four main areas of the business. So when the question is asked 'Why use Asset Construction Hire?' the answer is simple...

1. Product Range

An ever-growing range of products continue to meet the demands of ACH client requests. Four years into existence ACH has built a fleet totalling 370 units. That number is expected to exceed 450 units by the end of 2016.

ACH current fleet consists of;

- > 250 electric scissors lifts across all sizes and functionality
- > 40 rough terrain diesel scissor lifts
- > 60 rough terrain knuckle and straight booms
- > 20 fork lifts and tele-handlers

ACH have built a range of speciality equipment which includes; spider knuckle lifts, bioenergy booms, electric rough terrain scissors, tipper trucks and work utes. This diverse range of products, built from our customers' needs, allows ACH an advantage over other national hire companies.

2. Sales Team

ACH have a dedicated sales who are committed to solving problems for their customers. Any issues are considered and resolved with competency, care and timeliness.

The well-respected reputation of the account managers is qualified by their actions. From general questions to site inspection, the team prides themselves on being there for their customers.

With 40 years of combined experience in client service and a 'customer comes first' attitude, the company is one, people know they can rely on.

3. Operational Support

Many factors are considered when deciding which company to hire construction equipment from. One of those factors is how well the equipment is maintained and how quickly will the company respond when a break down or problem occurs.

ACH has five full time mechanics, three based at their workshop and two on the road completing repairs and mandatory inspections. ACH understand the cost to the customer if down time occurs due to faulty equipment and have on hand, fully qualified plant and auto mechanics to resolve problems quickly and accurately.

4. Administration Team

Communicating accurate financial transaction for every hire saves time and frustration. This is why ACH has a team who understand the importance of collecting accurate and concise information relating to the hire, which is speedily converted into an invoice—meaning the customer has all the relevant information at hand.

The paper work will be completed smoothly and when a query is raised the team at ACH will listen and respond quickly.

Construction Hire Range:

- > Electric Scissor Lifts
- > Knuckle Booms
- > Stick Booms
- > Rough Terrain Scissor Lifts
- > Electric & Hybrid Booms
- > Mast Lifts
- > Material Handling
- > Aluminium Scaffold
- > Truck Mount Booms
- > Spider Knuckle Lifts
- > Towable Booms
- > Towable Scissors
- > Lighting Towers
- > Generators
- > Compressors
- > Rollers
- > Glass Handling
- > Plant Equipment
- > Site Facilities

"We have listened to our customers and have established our systems based on what they need and want. I believe the client shouldn't have to problem solve that's our job and I have the team and equipment that can deliver on all accounts"

ACH Founder, Darrell Leemhuis



ECLIPSE

Eclipse Building Solutions delivers the highest standards of workmanship and personalised customer service, on time and within budget.

We offer a comprehensive range of services, specialising in exterior façades and metal roofing needs, including:

- > Tender consultation for architects
- > Design and quantity surveying
- > Exterior façade packages
- > Commercial and industrial metal roofing packages
- > Commercial linings
- > Commercial refurbishment – Exterior façade & roof conversion



ECLIPSEBUILD.COM.AU



THANK YOU TO OUR SPONSORS

A BIG THANK YOU MUST
GO TO ALL THE VALUED
SPONSORS OF THIS YEAR'S
AWARDS. WITHOUT THEIR
GENEROUS AND CONTINUED
SUPPORT THIS EVENT
WOULD NOT BE POSSIBLE.

BUILDING OVER \$50 MILLION
CDC FYSHWICK
BY A + P LEEMHUIS BUILDERS P/L /
DNA ARCHITECTS /
SELICK CONSULTANTS

NAMING RIGHTS SPONSOR



MAJOR SPONSORS



ASSOCIATE SPONSORS



SUPPORTING SPONSORS





ElvinGroup

6175 9600

Your One Stop Concrete Shop



Coloured Concrete

Pre-mix Concrete | Steel Supplies | Specialising Mixes | Exposed Aggregates | Modern High Tech Plant | Delivery to the ACT, Queanbeyan & Surrounding Districts | Truck Sizes from 0.2M³- 8.5M³ | Member of the Master Builders
45 Years in Business | Experienced Operators & Professional Service | Liquid Colour System

www.elvingroup.com.au

Mitchell Depot - 7 Cheney Pl Mitchell | Hume Depot - 15 Alderson St Hume

PROJECT OF THE YEAR &
COMMERCIAL BUILDINGS \$20M - \$50M

VIBE HOTEL
CANBERRA AIRPORT

BY CONSTRUCTION CONTROL

INSPIRED BY THE CIRCULAR
GEOMETRIES OF WALTER BURLEY
GRIFFIN'S PLAN FOR THE NATION'S
CAPITAL, THE CANBERRA VIBE
HOTEL CREATES A BOLD NEW
LANDMARK AT THE AWARD-
WINNING CANBERRA AIRPORT.





Inspired by the circular geometries of Walter Burley Griffin's plan for the nation's capital, the Canberra Vibe Hotel creates a bold new landmark at the award-winning Canberra Airport.

The brief for this project was clear. Create a hotel that not only serves the many business and leisure travellers that pass through the gateway to the nation, but also deliver a new hub for business meetings, informal coffee catch-ups and formal dinner events.

The \$44 million, 4.5-star hotel developed by Canberra Airport Corporation and operated by Toga

Far East Hotels features 191 rooms including 12 suites over six levels and nine apartments, together with conferencing facilities, a restaurant, bar and lounges.

Situated adjacent to the new terminal, the semi-circular building is centred on a dramatic full height circular atrium that references Griffin's plan for Canberra and gives a nod to Frank Lloyd Wright's Guggenheim Museum. The spectacular black and white atrium – the hotel's signature space – is pierced by large skylights, and soars above the lobby and entertainment areas.



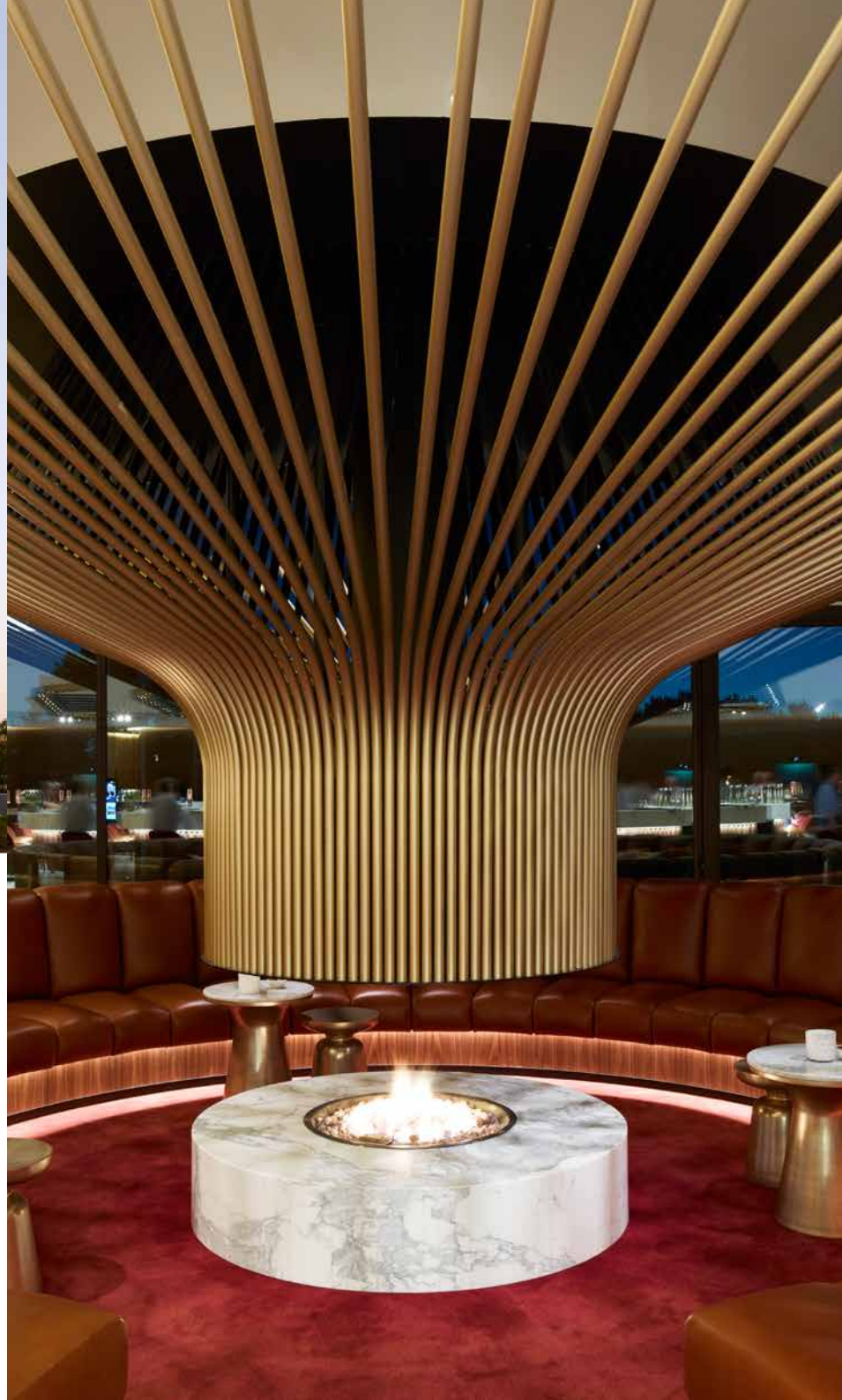
Each guest room, featuring a view of the city or Lake Burley Griffin, offers a calm retreat and all the travel essentials. First class rooms offer the added bonus of luxurious bathtubs, while the apartments have separate living areas and kitchenettes. The state-of-the-art gym, spaces geared for meetings and conferences and flexible layouts all add to the experience.

The architecture, design and construction have created an aesthetic that is unique to Canberra, reflecting the history, urban setting and natural surroundings of the Bush Capital, while also

evoking the signature sophistication and style that guests expect from a Vibe hotel.

An economic driver for Canberra at a time when the construction sector was slowing, the Canberra Vibe Hotel was built in less than 18 months by Construction Control, and created around 600 direct and indirect jobs during the construction phase.

An exceptional new address for the nation's capital, the hotel plays a strategic role in Canberra Airport's ongoing development, and adds extra strength to the case for direct international flights into the ACT.





ConstructionControl

Delivering award winning projects for our clients



Quality
ISO 9001
SAI GLOBAL



Environment
ISO 14001
SAI GLOBAL



Health & Safety
AS 4801
SAI GLOBAL

WINNER

SUBCONTRACTOR OF THE YEAR & BEST USE OF MATERIAL - INTERIOR FINISH

J&J INTERIORS

VIBE HOTEL, CANBERRA AIRPORT

Drawing on Walter Burley Griffin's plan for Canberra, and reinventing the atrium hotel concept, the new Vibe Hotel is a new destination that will attract visitors and residents with its timeless design, attention to detail and high quality finishes.

The striking circular atrium is testament to the expertise of J&J Interiors' experienced team. This space – which can cater for intimate gatherings and large-scale events – draws the eye upwards towards the circular skylights that let in daylight and create a constellation at night. References to Griffin's axial design are echoed through the selection of light pelmets and bulkhead details.

The glorious tones of the walnut timber feather panelling, together with the highlights of bronze and gold aluminium, deliver an outstanding result – but the process was not without its challenges. The curved walnut panels demanded custom-designed tools, and an intricate eye for detail. The interaction between the panels, curved framework and bulkhead detail highlights the team's ability to systemise a very complex procedure and deliver an awe-inspiring end result that will stand the test of time.



A Unit 1, 92 Sawmill Circuit
Hume ACT 2620
P 02 6162 3616
E admin@jjinteriors.com.au

Builders Lic No: 2010803
ACN: 120 187 260



jjinteriors.com.au



***Ceilings
Partitions
Drywalls
Carpentry
Plastering
Detail Joinery
Fire Doors and Frames***



Find us on Facebook



WINNER

COMMERCIAL BUILDINGS MORE THAN \$50M

A + P LEEMHUIS BUILDERS

DNA ARCHITECTS

SELICK CONSULTANTS

CDC FYSHWICK

Creating a data centre that meets the highest security standards while delivering style and architectural sophistication is no mean feat. But combining a clever mixture of industrial and elegant finishes has resulted in a building that is now at the forefront of data centre design around the world. Pushing the boundaries of structural and services engineering performance to the limits, the building is earthquake resistant, secure and super-efficient. The operational functionality of the building is the envy of CDC's competitors, with open configurable spaces flexible to adapt to future shifts in technology.





sellick
consultants

Est. 1965

structural civil hydraulic
engineers

**FOR OVER 50 YEARS, SELICK CONSULTANTS
HAVE BEEN BUILDING A REPUTATION FOR
DELIVERING INNOVATIVE, VALUE-LED
SOLUTIONS FOR A FAST-CHANGING WORLD.**

With unparalleled experience in the ACT offering multi-discipline engineering services and now with offices in Sydney and Brisbane, we are positioned to offer a wide range of structural, hydraulic and civil engineering solutions that will meet the needs of any size project.

All of our offices offer a comprehensive range of civil, structural and hydraulic engineering design services, with a focus on deliverability, added value and attention to detail.

canberra | sydney | brisbane

02 6201 0200

www.sellickconsultants.com.au



WINNER

COMMERCIAL BUILDINGS \$5M - \$20M

MANTEENA

NEXT GEN CANBERRA

Reinventing the gym experience in Canberra demanded a dedication to detail – and the team behind Next Gen Canberra have delivered. Carefully-selected internal finishes include Western red cedar wall battens and screens, a glass central staircase, blackbutt sprung timber sports floors, and wall graphics in the children’s playroom. The facility features three swimming pools, each single-handedly tiled by one professional. Six championship glass-backed squash courts needed to comply with the World Squash Federation requirements. The various challenges and complexities – including the removal of an underground fuel tank and asbestos – were managed with aplomb.



Supplying products for many MBA winning projects | Architects requests are welcome | Quality service



Specialists in: Small & large format pavers | Masonry blocks | Step treads | Split face dry stack blocks
Concrete Curbs | Fence posts | Commercial & residential projects | Small & large jobs



Bink Cement Products believe in sustainable business practices which is why our raw materials are sourced locally and we manufacture locally. Bink Cement has the ability to supply all scale of projects from large commercial to smaller residential. We supply the building market, sand and soil landscape yards as well as South-East NSW with our superior products.

WINNER

COMMERCIAL BUILDINGS LESS THAN \$5M

PROJECT COORDINATION (AUSTRALIA)

HU GUO BAO EN BUDDHIST TEMPLE

Purpose built to accommodate an entire congregation in one place, the Hu Guo Bao En Temple incorporates a prayer hall, pagoda, ceremonial furnace, landscaped gardens and car parking, as well as conference and display rooms, a commercial kitchen and accommodation for the abbot and nuns. The design incorporates conventional structural elements – such as concrete, steel and timber – while external finishes include various feature masonry and cladding treatments. The roof consists of traditional ornamental features with a copper-coloured terracotta tile. A central water feature is dominated by a six-metre-high, 18 tonne granite statue that was sculpted in China.





Strong business foundations are built on quality insurance advice

As the preferred broker of the Master Builders Association, let Austbrokers Canberra provide your business with specialist advice and local knowledge for all your insurance needs.

As a leading national insurance brokerage, with a base in the heart of Canberra, your business can benefit from the expert knowledge of our local team, as well as the national bargaining power Austbrokers Canberra offers.

Having helped MBA members for over 15 years, our brokers understand the needs of your industry. We also understand the importance of maintaining the right cover for the right price.

We can help you with:

- Construction Insurance
- Earthmoving, Quarrying, Plant and Machinery
- Business Insurance
- Workers Compensation (NSW & ACT)
- Professional Indemnity Insurance
- Commercial Motor Fleet
- Public, Professional and Directors Liability
- NSW Home Warranty

Talk to us today to ensure your needs are adequately covered.

P (02) 6140 8100 | www.austbrokerscanberra.com.au | [@AustbrokersCBR](https://twitter.com/AustbrokersCBR)



Austbrokers Canberra Pty Ltd. ABN 36 123 669 992 | AFS Licence No 476373

WINNER

COMMERCIAL PROJECT EXHIBITING TECHNICAL DIFFICULTY

SHAPE

THE CANBERRA HOSPITAL LEVEL 4

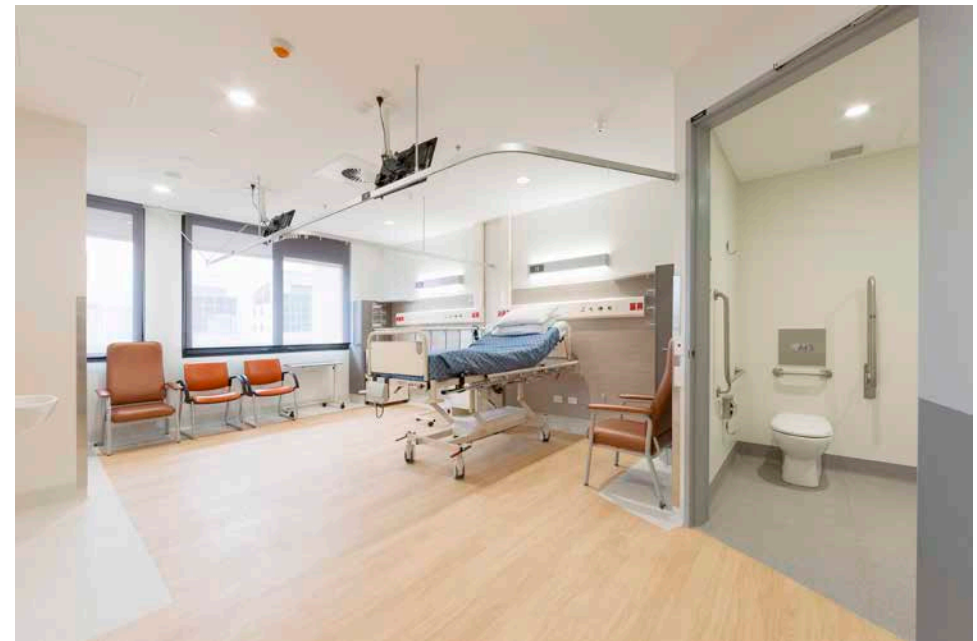
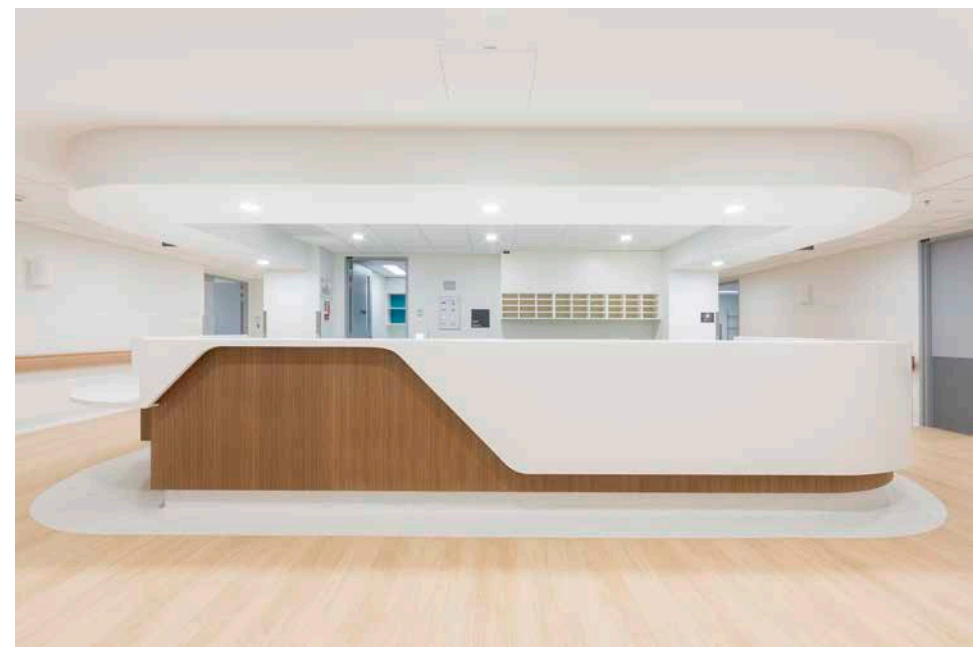
PROJECT MANAGER OF THE YEAR

KEVIN HODSON, SHAPE

The key challenge of this brief was to complete the refurbishment of existing clinical and non-clinical facilities at the Canberra Hospital without disrupting essential services. This was done despite a number of hurdles. The project team needed to take possession of fully operational wards to allow hydraulic pipe work to be installed and asbestos to be removed. Noisy works needed to be undertaken throughout the project. And whole building power shut downs were required to install new switchboards. The project, delivered on time and budget, ensured business-as-usual occurred at this busy hospital.

Working on a challenging project like the Canberra Hospital Level 4 refurbishment takes expertise and hard-won experience – qualities Kevin Hodson has in bountiful supply. After commencing his construction career with the British Army, Kevin undertook a diversity of roles including construction management, feasibility studies, site selection, procurement and cost planning. His project experience spans new builds, fitouts, civil and infrastructure works, and he's worked in the United Kingdom, Canada, Cyprus and the Middle East. After immigrating to Australia and joining SHAPE, Kevin has managed design and construct projects spanning seven sites with a total value of \$50 million.






TRANSFORMING PROPERTY

The Canberra Hospital, Building 15





We understand that the most important factor in successfully delivering quality fitout and refurbishment projects is listening to our client and consultant partners. For 26 years, SHAPE has

been transforming spaces within the commercial office, education, hotels, healthcare, retail and speciality sectors. SHAPE uses a collaborative approach to find innovative solutions that deliver

quality outcomes, with minimal disruptions to business operations. This ensures we not only meet our clients' expectations, but often exceed them.

SHAPEGROUP.COM.AU

SHAPE

WINNER

COMMERCIAL OR RETAIL FITOUT, REFURBISHMENT OR ALTERATION MORE THAN \$5M

ACT INTERIORS / HINDMARSH CONSTRUCTION
BULK GOODS WAREHOUSE

This 26,500 sqm multi-use building was the first consolidated retail fitout undertaken by the bulk goods warehouse in Australia, and involved the construction and retail teams working side by side as the store was stocked in preparation for the big launch. With a final value of \$47 million, the single-storey warehouse combines showroom and market hall with a 280-seat restaurant and commercial kitchen, loading dock facilities and 800 car spaces. The design team worked closely with the client and construction team to develop a floor plan which maximised sales space while maintaining flexibly for future requirements. The design required a high-performance structure and the latest in electrical, mechanical and fire services. Construction innovations delivered the client's fastest build in Australia to date.



WINNER

BEST USE OF MATERIAL - EXTERIOR FINISH

RED8 ROOFING / HINDMARSH CONSTRUCTION
BULK GOODS WAREHOUSE

A 150mm high precast concrete hob was used to provide a neat edge detail around the perimeter of the 26,500m² building. This edge detail simplified the pour sequence as it acted as formwork for the internal and external concrete slabs. The hob also provides edge protection for the external wall cladding and has alleviated waterproofing issues experienced by other warehouse store designs for the same client. The precast was designed to sit on the footings and then be bolted up to the structural columns, therefore removing the requirement for separate precast back propping.

At the roof line, the building required a high perimeter parapet wall around the entire building. The 140mm insulated panel also gave an excellent detailed finish at the junction of the roof and wall panel. The other efficiency achieved with this design was the ability to far exceed the building code with regards to the thermal insulation requirements.





SHAW BUILDING GROUP

ACN: 096 942 077 | ACT Lic: 200413781



EDUCATION | COMMERCIAL | HEALTH | AGED CARE | RESIDENTIAL

SHAWBG.COM.AU

WINNER

COMMERCIAL OR RETAIL FITOUT,
REFURBISHMENT OR ALTERATION MORE \$1M - \$5M

SMI GROUP

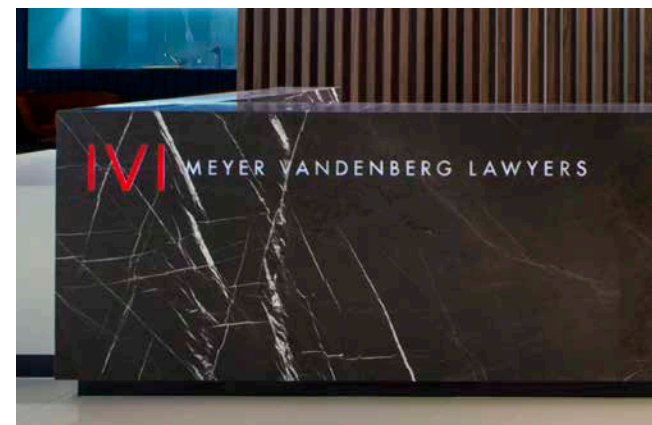
MEYER VANDENBERG LAWYERS FITOUT

ONSITE CONSTRUCTION MANAGER OF THE YEAR

GLENN ENSOR, SMI GROUP

The high-end and detailed finishes achieved on this impressive office fitout reflects the client's brand and delivers a high performance workspace. Spacious and aesthetically pleasing, the front-of-house facilities now include a large reception area with five meeting rooms, as well as catering facilities and amenities. Back of house, a range of working environments – from offices through to workstation

pods – are complemented by an enormous café-style breakout space. State-of-the-art technology and security systems combine with complex architectural detailing. All delivered on a tight timeframe, SMI ensured the team at Meyer Vandenberg enjoyed a smooth and seamless transition to their new office.





A carpenter by trade with nearly three decades of experience in the field, Glenn Ensor has been the site manager for SMI Group for six years. During this time, Glenn has overseen complex projects from upgrades of schools, museums and restaurants to office fitouts for large government departments. Glenn's fingerprints are on some of Canberra's most iconic buildings – from the Australian War Memorial to the National Gallery of Australia. Glenn has built a reputation for delivering projects on time, on budget and to a high-quality finish, and his commitment to collaboration is achieving outstanding outcomes around the nation's capital.



WINNER

COMMERCIAL OR RETAIL FITOUT,
REFURBISHMENT OR ALTERATION
LESS THAN \$1M

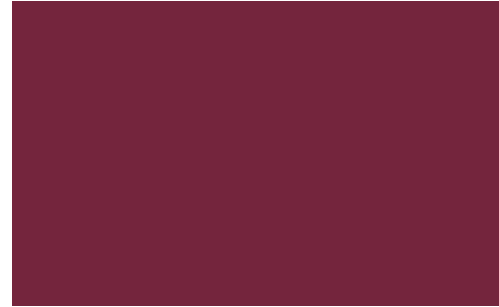
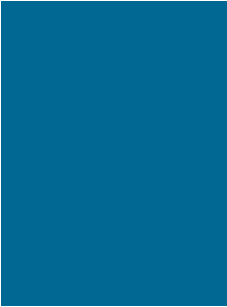
BUILT

SYNERGY GROUP FITOUT

Aiming to become Canberra's standout professional services workplace, this ultra-modern office fitout incorporates unexpected elements around every corner. Traditional red telephone boxes are the perfect spot for private conversations, while swings and grass in a dedicated playground space encourage casual discussions. Professional meeting rooms feature cutting-edge technology and colourful, bold graphics. The open-plan design fosters collaboration and knowledge sharing, while a 'welcome lounge' replaces the traditional reception area. The result is a unique and cohesive working environment that has inspired Synergy's staff and enabled the company to build a reputation as an employer of choice.



CHC Affordable Housing improves people's social and economic participation, health and wellbeing by providing a diverse range of affordable housing options for rent and sale.



This year, CHC is proud to have two of its recently completed projects as finalists in the following categories:

- Residential Special Purpose Dwelling/Adaptable Dwelling category
- Residential Apartment and Units up to 3 storeys
- Residential Chief Minister's Affordable Housing

We would like to acknowledge the teams of builders and consultants who help us achieve quality results for our renters and purchasers alike.

In particular, the teams who worked with us on the above two projects:

- Kasperek Architects and Renaissance Homes
- Kasperek Architects and PBS Building

Thank you all for helping us to continue to achieve our mission for our Canberra community.

www.chcaffordablehousing.com.au

WINNER

CIVIL BRIDGEWORKS

WODEN CONTRACTORS AND

CIVIL BRIDGE & WHARF

MOLONGLO LINK BRIDGE AND TRUNK SEWER PROJECT

The Molonglo Link Bridge and Trunk Sewer Project represents a construction high point in the nearly 60-year history of Woden Contractors. Built in partnership with Civil Bridge & Wharf, the 243 metre long bridge is the longest ever built in the ACT, and at 30 metres above the Molonglo River posed the significant engineering challenges of incrementally launched construction and environmental management in a sensitive area.

The bridge is required to carry a new trunk gravity sewer across the river to link into the existing Tuggeranong main carrier sewer and thence to the Lower Molonglo Sewage Treatment Works. The bridge is also to be used for pedestrian and cycleway access as well as having the capacity to carry Icon Water maintenance vehicles to 11 tonnes gross mass.



ONLINE REGISTRATION

for industry based courses
is now available with
MBA Group Training.

MBA Group Training provides learning opportunities through industry training and education services. Safe work practices within the industry are a priority for MBA Group Training and expert advice is available in a range of areas including occupational health and safety requirements, industry codes of practice, education and training.

MBA Group Training has created significant employment opportunities throughout the industry as well as provided many employer benefits. Building industry training courses are conducted throughout Canberra and the region.

INDUSTRY TRAINING COURSES

MBA Group Training offers a wide range of industry training options. All training is provided by qualified trainers with industry experience. Many of our training programs are approved by the ACT Building and Construction Industry Training Fund Authority which reimburses up to 70% of course costs for eligible course participants, upon successful completion of the course.

mba.org.au

For more information about training opportunities contact MBA Group Training:

T 02 6175 5900

F 02 6280 9118

E training@mba.org.au

www.mba.org.au/training



ASBESTOS AWARENESS

WORKING AT HEIGHTS

ELEVATED WORK PLATFORM

CONFINED SPACES

GENERAL CONSTRUCTION INDUCTION

OPERATE A FORKLIFT TRUCK

EXPLOSIVE POWER TOOLS

ERECT AND DISMANTLE SCAFFOLDING

BULLYING & HARASSMENT

HEALTH & SAFETY REPRESENTATIVES

MANUAL HANDLING

OPERATE A MATERIALS HOIST

LICENCE TO PERFORM DOGGING

CERTIFICATE IV IN BUILDING & CONSTRUCTION



WINNER

CIVIL HYDRAULIC

BOST PTY LTD

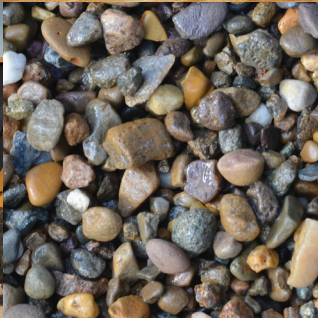
MUGGA LANE RMC HYDRANT LINE & ASSOCIATED WORKS

This project involved the installation of a hydrant line, water tanks, fire pumps, and the shed to house the pumps, as well as a fire brigade booster assembly and other incidental works. A 150mm diameter high-density polyethylene fire main now traverses more than 2.1 kilometres along the perimeter of the tenancies within the Mugga Lane Resource Centre. Twenty-four hydrant pumps have been installed and are serviced by dual diesel fire booster pumps, and three 150,000 litre tanks supply the booster pumps. The slab on which these tanks were placed sits on a subgrade that demanded remediation after almost three metres of old rubbish was discovered underneath.





FROM
THE WEST
BELCONNEN
QUARRY
TO **YOUR**
DOOR



WASHED RIVER SAND is clean, dust free, and meets ACTEW specifications for filter and bedding sand. It is perfect for high MPA concrete. Our sand is cleaned through a specialized washing process to remove all the silt and clay. This avoids a dust problem and eliminates compaction.

HORSE ARENA SAND Our sand is perfect for horse arenas or for racetracks as it is low dust, hard wearing and gentle on the horse's legs.

RIVER PEBBLE is a product that has naturally round stones, with no sharp edges and it comes in a mixture of soft natural colours. Our River Stone is double washed and is graded into 4 sizes of pebble and stones – there is a size available that is perfect for all landscaping needs.

GINNINDERRA RED GRANITE The iconic Ginninderra Red Granite is used throughout the region and can be seen in nearly every street in Canberra. It is used daily for driveways, car parks, nature strips, medium strips, road verges, pathways, bicycle tracks, gardens and around trees.

RAMMED EARTH WALLS AND CONSTRUCTION Ginninderra Red Granite is the perfect product to use in the construction of rammed earth structures such as walls, fireplaces, landscape features or an entire home. The natural appearance of rammed earth walls built with our red gravel is unmatched by conventional building products and it produces a finish that is extremely attractive. Plus it is an environmentally responsible building medium.

TENNIS COURT GRAVEL The Tennis Court Gravel is a finer grade of the main Ginninderra Red Granite product. It is specially screened to order, so that all larger stones are removed so that it forms an excellent surface for gravel tennis courts, in the old clay court fashion.

GINNINDERRA 15MM ORNAMENTAL STONE is a chunkier sized product and is used as a cost effective way to replace scoria, and it has a softer more natural appearance.

TOPSOIL is a blended topsoil that meets B and C type specification and is suitable for gardens, lawns and ovals.

LANDFILL ACCEPTED Clean fill products that are accepted include: Clean fill, VENM Virgin Excavated Natural Material, soil, clay, sand and rock.

BUY CLEANFILL VENM (Virgin Excavated Natural Material) is a cost effective material that can be used for all fill applications. It can be used to fill behind retaining walls or to form a foundation for gardens or under driveways.

Discuss your **next project** with one of our experienced team members **02 6254 0111**

www.TharwaSand.com.au

WINNER

CIVIL SUBDIVISION

BMD CONSTRUCTIONS;
BLACK MOUNTAIN CONSTRUCTION ASSURANCE
MONCRIEFF EAST ESTATE - STAGES 1A, 1B AND 5

Contributing 312 residential lots, two multi-unit sites and open space to the Moncrieff Residential Estate, the project team delivered two gross pollutant traps, wastewater management systems, street verges, wet zones and open space. The team worked together on best practice techniques to avoid traffic congestion, reduce pollution and minimise noise, while also finding opportunities to recycle and reuse materials onsite. A spoil location sited on future parklands prevented 50,000 cubic metres of material from being transported through the estate, while adding long-term aesthetic value to the landscape and amenity to the local community.





Images courtesy of Rodrigo Vargas | www.rodrigovargas.com



Capital Hydraulics and Drains Pty Ltd were engaged for the bulk excavation and slab preparation (Ground works), all hydraulics (internal & externals) and the external works for the new multi storey Public Carpark at Calvary Hospital, located on Mary Potter Circuit, Bruce.

Capital Hydraulics and Drains was established in 1999, CHD has established a reputation for their ability to provide a reliable and timely service on all of their projects, and are well known for their high level of workmanship and performance on all projects. The company

is committed to meeting the needs and expectations of our stakeholders, staff and community members through various controls and continuous improvement measures.

We achieve our commitment to stakeholders through the use of project management resources which assist to ensure that the project is completed in a timely manner, the appropriate equipment and man power are utilised throughout the project and the timely delivery and installation of products. We achieve our commitment to staff by providing

them with safe work environments and the ability to learn and expand their knowledge through onsite and in-house training. Our staff are provided with onsite work health and safety briefings at the commencement of each project to ensure they are aware of any risks on site. We achieve our commitment to the community by ensuring that our works have minimal interference on surrounding areas, adhering to all environmental protection requirements and most importantly providing a quality service for community use.

Capital Hydraulics and Drains forms part of the Capital Group ACT, and is AS/NZS ISO 9001, AS/NZS ISO 4801 and AS/NZS ISO 1401 certified.

WINNER

CIVIL SUSTAINABLE CONSTRUCTION

DOWNER

LOW CARBON ASPHALT

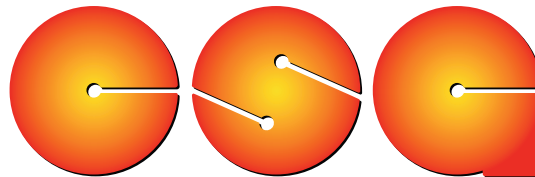
This innovative road surfacing approach, developed by Downer, combines recycled materials – including reclaimed asphalt pavement and recycled printer toner – with warm-mix asphalt technologies to reduce energy and conserve finite natural resources. Using recycled printer toner and warm mix limits the environmental impact of asphalt, and reduces carbon emissions by up to 23 per cent. Downer has recently partnered with TAMS to use the Low Carbon Asphalt – consisting of 30 per cent recycled asphalt and toner – in Nicholls, and is delivering on a range of other projects in the ACT.



*We deliver to Canberra and
the surrounding region*

CANBERRA'S LEADING SUPPLIER OF SANDS, SOILS & LANDSCAPE PRODUCTS.

WE SPECIALISE IN PROVIDING A GREAT VARIETY OF LANDSCAPE PRODUCTS. OUR EXPERIENCED TEAM ARE ABLE TO PROVIDE ASSISTANCE IN DELIVERING YOUR PROJECT, FROM THE BACKYARD TO THE TECHNICALLY SPECIFIED



CANBERRA SAND & GRAVEL

SPECIALISTS IN

- LANDSCAPING CENTRES
- BULK EXCAVATIONS & SITE CUTS
- CONTRACT CRUSHING & SCREENING
- TREE SHEARING & SHREDDING SERVICES

Call (02) 6280 4133
www.cansand.com.au

HUME - MITCHELL - BELCONNEN

EQUIPMENT HIRE

- EXCAVATORS
- FRONT END LOADERS
- TRUCKS & TRAILERS

WINNER

CIVIL ROADWORKS

CHINCIVIL

BARTON HIGHWAY INTERSECTION IMPROVEMENTS AT MCINTOSH CIRCUIT

Widening the highway to provide an acceleration lane, improvements to the shoulder width and better access to private property entries on the Highway have all boosted safety and accessibility on what was once a dangerous stretch of road. The construction team encountered very poor ground conditions, which required a range of pavement foundation improvements. Particular attention was paid to where new and old pavements met, with a geosynthetic fabric used to strengthen the foundations. The existing pavement at the intersection has extensive flushing of the seal. The solution? Removing as much flushed pavement as possible by jet water blasting the surface prior to the new seal being laid.





MBA Group Training works with **Southern Training Organisation** who offer High Risk Licence training at the MBAGT Skills Centre. Master Builders strives to meet the diverse training needs of the construction industry at our ACT Skills Centre.

Southern Training Organisation is registered to deliver qualifications and units of competency in Forestry, General Construction, Civil Construction and Transport and Logistics. Southern Training Organisation can customise training solutions to meet client needs and deliver High Risk Work Licence training and assessment. Browse the Master Builders website under training to view the High Risk Licence training calendar.

For more information about training opportunities contact MBA Group Training:

STO RTO: 91378 MBA Group Training RTO: 88163

T 02 6175 5900
F 02 6280 9118
E training@mba.org.au
www.mba.org.au/training



complex civil

CIVIL CONSTRUCTION | PROJECT MANAGEMENT | CONSTRUCTION CONSULTANTS

P 02 6242 9911 F 02 6242 9922

E info@complexcivil.com.au

A 14 Baillieu Court Mitchell ACT 2911

ABN: 59 130 697 639

complexcivil.com.au



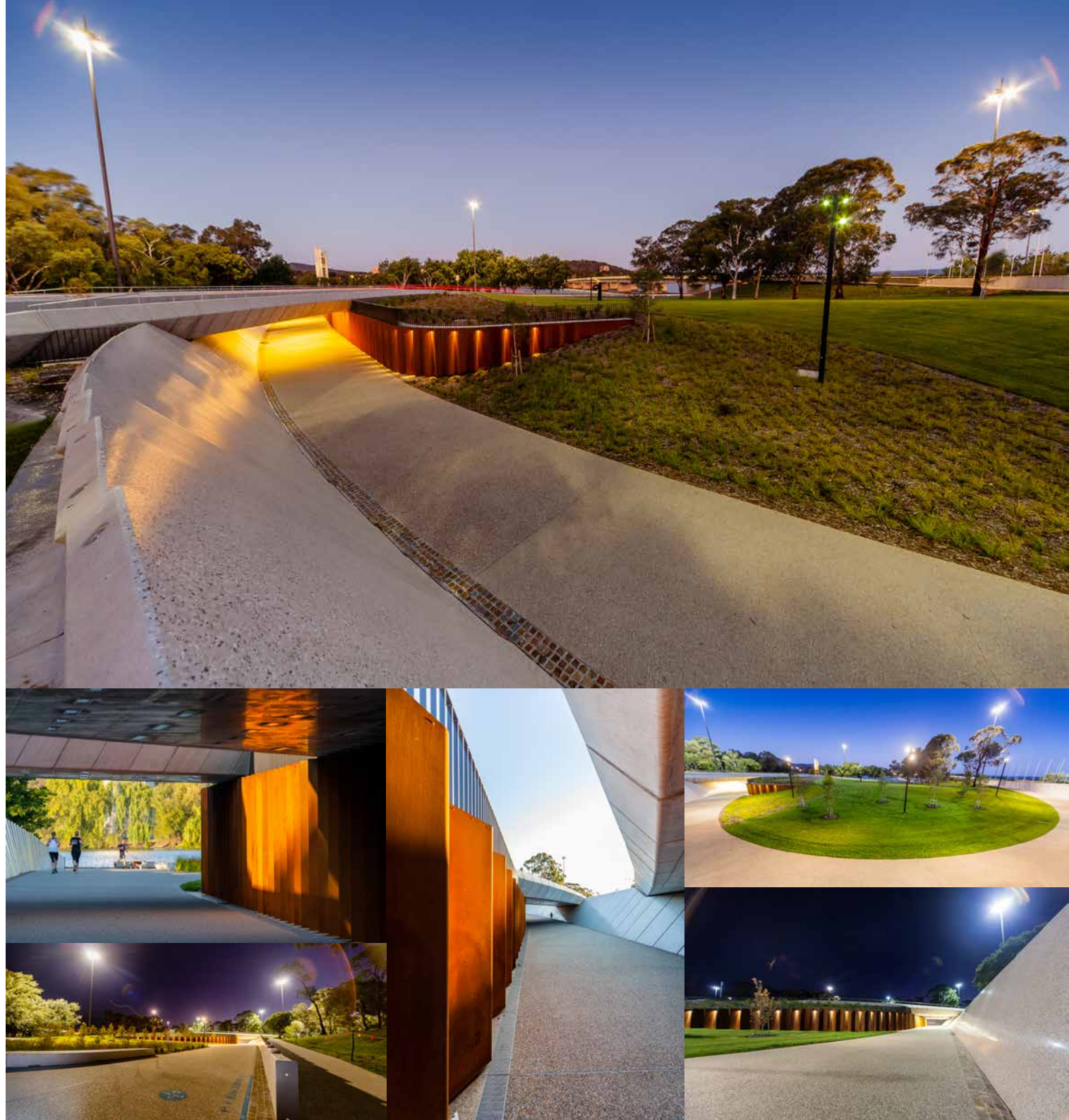
WINNER

CIVIL OTHER

WODEN CONTRACTORS

BOWEN PLACE CROSSING

Removing a hazardous blackspot for pedestrians and cyclists when crossing Bowen Drive was the critical and final link in what is now a shared pathway system around Lake Burley Griffin. Completing a quality result in a confined area demanded innovative architectural design and a highly-skilled construction team. The resulting crossing blends into its spectacular surrounds, and gives the impression that the works have always been there. The design's integration with the canopy of existing trees belies the challenges faced by the construction team, which continued to experience high levels of car, pedestrian and bicycle traffic throughout the project.



WINNER

CIVIL WORK HEALTH AND SAFETY GUIDELINE ACT CONSTITUTION AVENUE UPGRADE

The upgrade of Constitution Avenue is reinventing this entry to the nation's capital. Guideline ACT's integrated approach to safety, environment and quality is essential on a project that involves complex underground services while maintaining traffic flows in a busy part of Canberra's CBD and protecting both workers and the community from harm. Training days are a regular part of every project Guideline undertakes, and innovative ideas that improve safety are encouraged, explored and implemented across the business. Guideline ACT has also rolled out a range of health and wellbeing programs to support its most valued asset – its people.



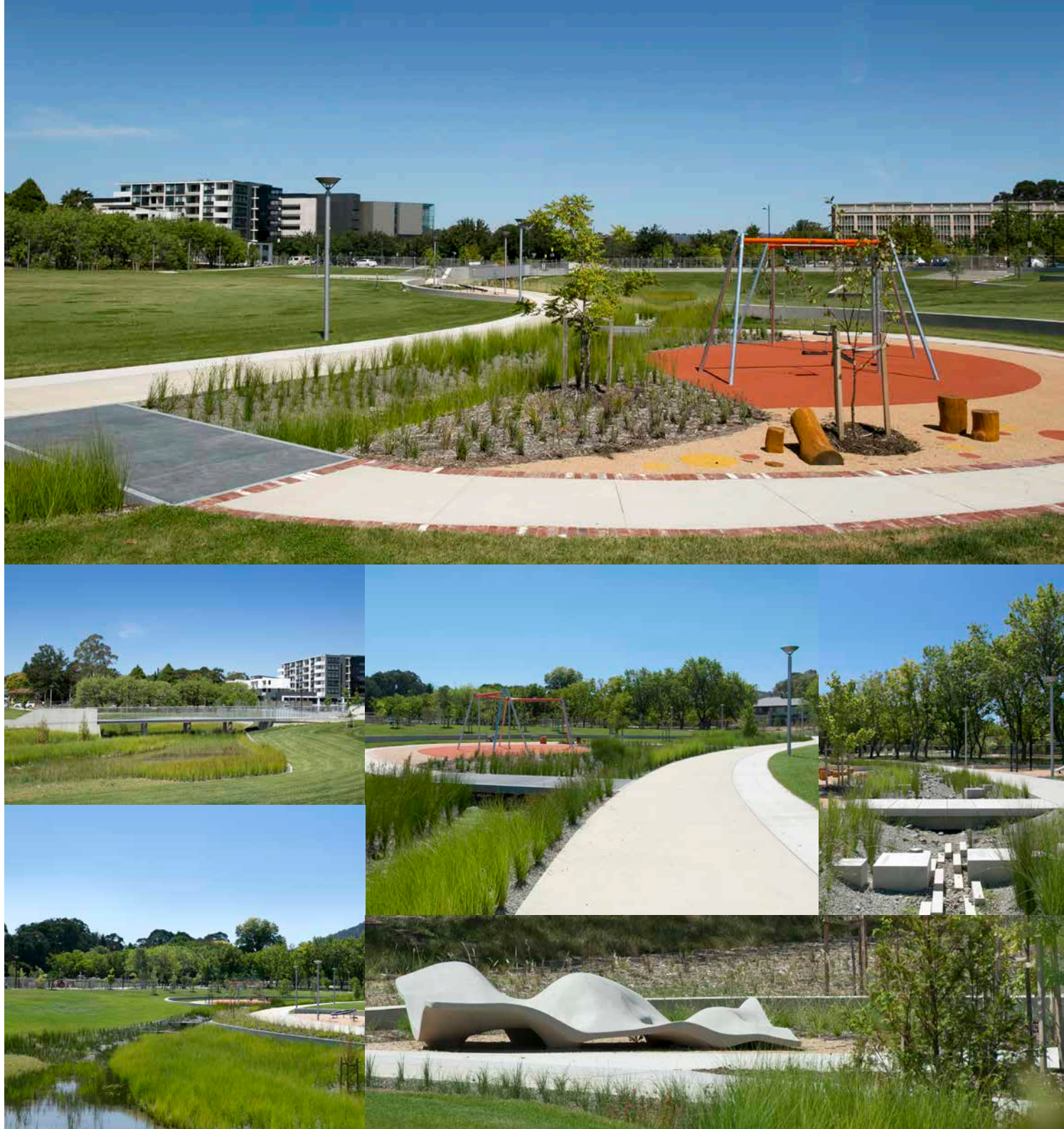
WINNER

LANDSCAPING - PUBLIC DOMAIN

RAM CONSTRUCTIONS

CAMPBELL 5 OPEN SPACE

This carefully-considered and clever design at Campbell 5 incorporates water capture, storage and recycling systems, recycled materials and an abundance of trees and plants. 200 individually-placed precast concrete features serve both aesthetic and practical purposes, enhancing access, water dissipation and a sense of play. The bespoke pavements, consisting of light-exposed concrete, was specially developed by RAM. Trees removed during civil construction were reimagined as new play structures, while 69,000 plants were introduced into the space. This project on behalf of the Land Development Agency has delivered a unique and high quality public landscape for the people of Canberra.





At RAM Constructions we are proud of our achievements and the relationships we have built over more than forty years here in Canberra. As a family business, our story is embedded in Canberra's landscape and built environment - both past and future. Four generations of our family have called Canberra home and delighted in it's diversity and vitality.

From our beginnings in landscape contracting, RAM Constructions has diversified into commercial, residential construction, building award-winning free-standing houses and medium density housing.

- Residential and Commercial
- Design and Construct
- Project Management
- Community Buildings
- Landscape Construction
- Civil Construction

T (02) 6242 5200
info@ramconstructions.com.au
 Unit 10, 96-98 Vicars Street
 Mitchell, ACT 2911



WINNER

SUSTAINABLE CONSTRUCTION - COMMERCIAL

BREMA GROUP

CANBERRA CENTRE DFDG MALL

Recognising that efficient reuse of resources can save money and reduce our environmental impact, Brema Group has developed a recycling and reuse strategy that leads the industry. Taking the time to salvage materials on each construction site, separating and stockpiling materials for recycling, and even selling unwanted materials online, help the team reduce the waste sent to landfill. According to Brema Group's waste management register, more than 5,000 tonnes of waste was diverted from landfill on the Canberra Centre DFDG Mall project alone – and Brema Group reused or recycled 92 per cent of materials during construction. This commitment also minimises the energy required to process, manufacture and transport materials.

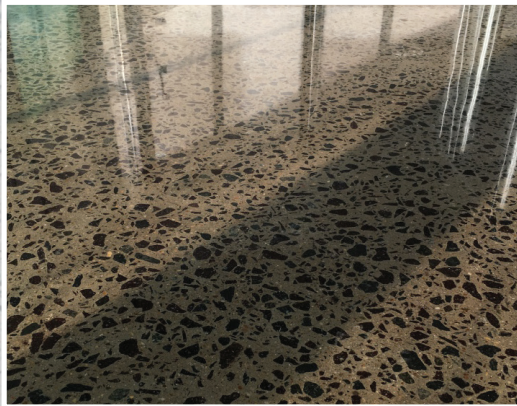




Polished
Concrete
Specialists

Polished Concrete Specialists

www.ruffrock.com



Services

At **Ruff Rock** we specialise in polished concrete. Our clients are guaranteed a team of highly skilled polishers who are dedicated to delivering a product of the highest quality.

Contacts

Phone	Gavin Reid 0409 674 496
Email	office@ruffrock.com
Website	www.ruffrock.com
Facebook	facebook.com/ruffrockpolishedconcrete

JUDGES' COMMENDATIONS



CIVIL - SUBDIVISION

HUON CONTRACTORS

PROJECT GOOGONG NH1A - STAGE 4, 5 AND 6



CIVIL - OTHER

GUIDELINE ACT

PROJECT BULK GOOD WAREHOUSE

"mate, that was bloody close!"

Don't just walk by,

TELL US!

National Near Miss Reporting Line

1800 336 766



WORK HEALTH AND SAFETY - CIVIL

DOWNER

PROJECT NEAR MISS HOTLINE





BUILDING LESS THAN \$5MILLION

CLASSIC CONSTRUCTIONS

PROJECT CLONAKILLA CELLAR DOOR

Consistently awarded for excellence in retail, commercial and residential construction

MonarchBuildingSolutions.com.au | T 02 6162 0232

 @monarch.cbr | Find us on 

ACT LIC BUILDER 200697

ACN: 115 347 969



MULTI-PURPOSE TRAINING & MEETING FACILITIES, TAILORED FOR YOU...AND NEAR YOU!

When you **need room for a business meeting or a training program**, there is always a professional solution in the Master Builders ACT training facility located next to the Canberra Outlet Centre in Fyshwick.

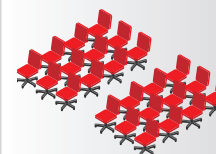
We offer rooms of various sizes, from comfortable one-on-one interview rooms, training and meeting rooms accommodating up to 60 people, or for that very special meeting the Master Builders ACT Boardroom is also available for hire. Your guests will not have to find or pay for parking as our site has 120 free car parking spaces.

With flexible room lay-outs and seating arrangements, choose classroom, theatre or boardroom style.

The dedicated Master Builders staff are trained to ensure your event is a success.

For further information contact, MBA Group Training
(02) 6175 5900 or training@mba.org.au

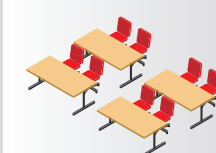
THEATRE STYLE



BOARDROOM STYLE



CLASSROOM STYLE



TECHNOLOGY



FINALISTS



PROJECT OF THE YEAR

FINALISTS

A + P LEEMHUIS BUILDERS;
DNA ARCHITECTS; SELICK CONSULTANTS

PROJECT CDC FYSHWICK



PROJECT OF THE YEAR

FINALISTS

CHASE BUILDING GROUP (CANBERRA);
AMALGAMATED PROPERTY GROUP

PROJECT AMAYA APARTMENTS



PROJECT OF THE YEAR

FINALIST

CONSTRUCTION CONTROL

PROJECT CANBERRA AIRPORT VIBE HOTEL



PROJECT OF THE YEAR

FINALIST

SHAPE

PROJECT THE CANBERRA HOSPITAL LEVEL 4

FINALISTS



PROJECT MANAGER OF THE YEAR

FINALIST KEVIN TANCHEVSKI

COMPANY COCKRAM CONSTRUCTION

PROJECT AUSTRALIAN FEDERAL POLICE
FORENSIC FACILITY



PROJECT MANAGER OF THE YEAR

FINALIST KEVIN HODSON

COMPANY SHAPE

PROJECT THE CANBERRA HOSPITAL LEVEL 4



PROJECT MANAGER OF THE YEAR

FINALIST SARAH BURROWS

COMPANY BUILT

PROJECT BURGMANN COLLEGE KITCHEN AND
DINING PRECINCT REFURBISHMENT



ONSITE CONSTRUCTION MANAGER OF THE YEAR

FINALIST DAVID YOUNG

COMPANY AMA PROJECTS

PROJECT WALTER TURNBULL FITOUT



ONSITE CONSTRUCTION MANAGER OF THE YEAR

FINALIST GLENN ENSOR

COMPANY SMI GROUP

PROJECT MEYER VANDENBERG LAWYERS FITOUT



ONSITE CONSTRUCTION MANAGER OF THE YEAR

FINALIST GRANT WATSON

COMPANY COCKRAM CONSTRUCTION

PROJECT AUSTRALIAN FEDERAL POLICE
FORENSIC FACILITY

FINALISTS



BUILDINGS MORE THAN \$50M

FINALIST

A + P LEEMHUIS BUILDERS P/L; DNA ARCHITECTS; SELICK CONSULTANTS P/L
PROJECT CDC FYSHWICK



BUILDINGS MORE THAN \$50M

FINALIST

COCKRAM CONSTRUCTION
PROJECT AUSTRALIAN FEDERAL POLICE FORENSIC FACILITY



BUILDINGS MORE THAN \$50M

FINALIST

SHAPE
PROJECT THE CANBERRA HOSPITAL STAGING & DECANTING



BUILDINGS MORE THAN \$50M

FINALIST

CONSTRUCTION CONTROL
PROJECT ALEXANDER MACONOCHE CENTRE
ADDITIONAL FACILITIES PROJECT



BUILDINGS \$20M-\$50M

FINALIST

HINDMARSH CONSTRUCTION
PROJECT NATIONAL CAPITAL PRIVATE HOSPITAL



BUILDINGS \$20M-\$50M

FINALIST

CONSTRUCTION CONTROL
PROJECT CANBERRA AIRPORT VIBE HOTEL

FINALISTS



BUILDINGS \$20M-\$50M

FINALIST

HINDMARSH CONSTRUCTION

PROJECT BULK GOODS WAREHOUSE



BUILDINGS \$5M-\$20M

FINALIST

SHAPE

PROJECT THE CANBERRA HOSPITAL LEVEL 4



BUILDINGS \$5M-\$20M

FINALIST

SHAPE

PROJECT THE CANBERRA HOSPITAL BUILDING 15



BUILDINGS \$5M-\$20M

FINALIST

MANTEENA

PROJECT NEXT GEN CANBERRA



BUILDINGS LESS THAN \$5M

FINALIST

PROJECT COORDINATION (AUSTRALIA)

PROJECT HU GUO BAO EN BUDDHIST TEMPLE



BUILDINGS LESS THAN \$5M

FINALISTS

CLASSIC CONSTRUCTIONS

PROJECT CLONAKILLA CELLAR DOOR

FINALISTS



COMMERCIAL PROJECT EXHIBITING
TECHNICAL DIFFICULTY OR
INNOVATION

FINALIST

CONSTRUCTION CONTROL

PROJECT CANBERRA AIRPORT VIBE HOTEL



COMMERCIAL PROJECT EXHIBITING
TECHNICAL DIFFICULTY OR
INNOVATION

FINALIST

CONSTRUCTION CONTROL

PROJECT ALEXANDER MACONOCHIE CENTRE
ADDITIONAL FACILITIES PROJECT



COMMERCIAL PROJECT EXHIBITING
TECHNICAL DIFFICULTY OR
INNOVATION

FINALIST

SHAPE

PROJECT AUSTRALIAN CATHOLIC UNIVERSITY HEALTH
SCIENCES EXTENSION



COMMERCIAL PROJECT EXHIBITING
TECHNICAL DIFFICULTY OR
INNOVATION

FINALIST

SHAPE

PROJECT THE CANBERRA HOSPITAL - INTERIM
EMERGENCY DEPARTMENT EXTENSION STAGE 1 -
MENTAL HEALTH UNIT AND EMU



COMMERCIAL PROJECT EXHIBITING
TECHNICAL DIFFICULTY OR
INNOVATION

FINALIST

SHAPE

PROJECT THE CANBERRA HOSPITAL LEVEL 4



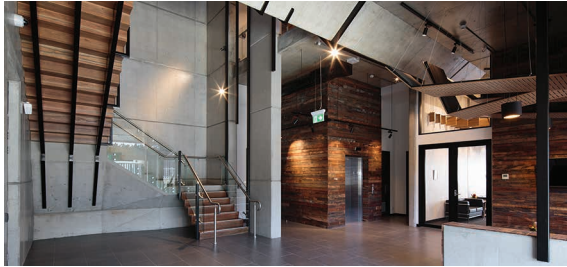
COMMERCIAL PROJECT EXHIBITING
TECHNICAL DIFFICULTY OR
INNOVATION

FINALIST

COCKRAM CONSTRUCTION

PROJECT AUSTRALIAN FEDERAL POLICE FORENSIC
FACILITY

FINALISTS



**COMMERCIAL PROJECT EXHIBITING
TECHNICAL DIFFICULTY OR
INNOVATION**

FINALISTS

A + P LEEMHUIS BUILDERS P/L; DNA
ARCHITECTS; SELICK CONSULTANTS

PROJECT CDC FYSHWICK



**COMMERCIAL PROJECT EXHIBITING
TECHNICAL DIFFICULTY OR
INNOVATION**

FINALIST

SHAPE

PROJECT THE CANBERRA HOSPITAL BUILDING 15



**FITOUT, REFURBISHMENT OR
ALTERATION MORE THAN \$5M**

FINALIST

SMI GROUP

PROJECT ATO BARTON FITOUT



**FITOUT, REFURBISHMENT OR
ALTERATION MORE THAN \$5M**

FINALIST

SHAW BUILDING GROUP

PROJECT REFURBISHMENT OF THE CRAIG BUILDING,
ANU



**FITOUT, REFURBISHMENT OR
ALTERATION MORE THAN \$5M**

FINALIST

ACT INTERIORS;
HINDMARSH CONSTRUCTION

PROJECT BULK GOODS WAREHOUSE



**FITOUT, REFURBISHMENT OR
ALTERATION \$1M- \$5M**

FINALIST

SHAPE

PROJECT RSM BIRD CAMERON

FINALISTS



FITOUT, REFURBISHMENT OR ALTERATION \$1M- \$5M

FINALIST

SMI GROUP

PROJECT MEYER VANDENBERG LAWYERS FITOUT



FITOUT, REFURBISHMENT OR ALTERATION \$1M- \$5M

FINALISTS

SHAPE;

AMC + ARCHITECTURE

PROJECT CAPITAL PATHOLOGY



FITOUT, REFURBISHMENT OR ALTERATION \$1M- \$5M

FINALIST

BUILT

PROJECT BURGEMANN COLLEGE KITCHEN AND DINING PRECINCT REFURBISHMENT



FITOUT, REFURBISHMENT OR ALTERATION \$1M- \$5M

FINALIST

AMA PROJECTS

PROJECT WALTER TURNBULL FITOUT

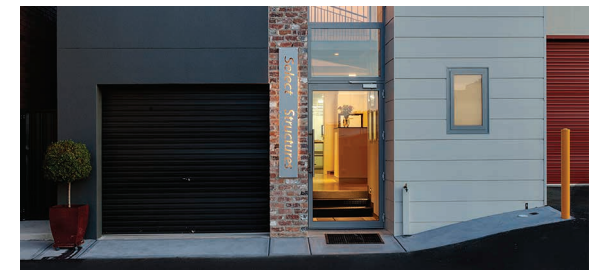


FITOUT, REFURBISHMENT OR ALTERATION \$1M- \$5M

FINALIST

SHAPE

PROJECT AUSTRALIAN CATHOLIC UNIVERSITY HEALTH SCIENCES EXTENSION



FITOUT, REFURBISHMENT OR ALTERATION LESS THAN \$1M

FINALIST

SELECT STRUCTURE

PROJECT COMMERCIAL CARETAKERS RESIDENCE

FINALISTS



FITOUT, REFURBISHMENT OR
ALTERATION LESS THAN \$1M

FINALIST

BUILT

PROJECT SYNERGY GROUP FITOUT

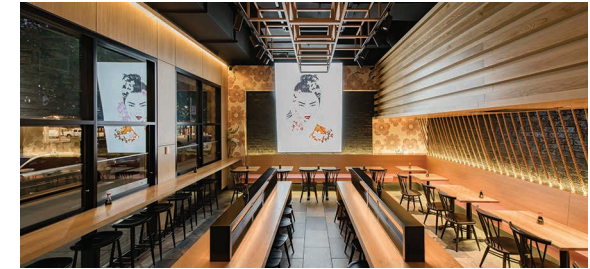


FITOUT, REFURBISHMENT OR
ALTERATION LESS THAN \$1M

FINALISTS

MONARCH BUILDING SOLUTIONS;
THE DEPT. OF DESIGN

PROJECT CINNABAR



FITOUT, REFURBISHMENT OR
ALTERATION LESS THAN \$1M

FINALIST

BLACKETT PROPERTY GROUP

PROJECT SOI NOODLE FITOUT

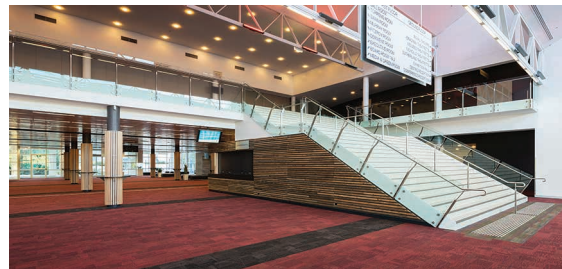


FITOUT, REFURBISHMENT OR
ALTERATION LESS THAN \$1M

FINALIST

CLASSIC CONSTRUCTIONS

PROJECT CLONAKILLA CELLAR DOOR



FITOUT, REFURBISHMENT OR
ALTERATION LESS THAN \$1M

FINALIST

MONARCH BUILDING SOLUTIONS

PROJECT NCC - FOYER UPGRADE



FITOUT, REFURBISHMENT OR
ALTERATION LESS THAN \$1M

FINALIST

JLL

PROJECT WSP PARSONS BRINCKERHOFF -
OFFICE FITOUT

FINALISTS



FITOUT, REFURBISHMENT OR ALTERATION LESS THAN \$1M

FINALIST

AMA PROJECTS

PROJECT IP AUSTRALIA



FITOUT, REFURBISHMENT OR ALTERATION LESS THAN \$1M

FINALISTS

TAYLOR & KNOWLES BESPOKE BUILDING;
SUGAR DESIGNS

PROJECT QUEANBEYAN VET HOSPITAL



FITOUT, REFURBISHMENT OR ALTERATION LESS THAN \$1M

FINALIST

AMA PROJECTS

PROJECT INNOVATION XCHANGE HUB



FITOUT, REFURBISHMENT OR ALTERATION LESS THAN \$1M

FINALIST

MONARCH BUILDING SOLUTIONS

PROJECT THE DRAWING ROOM



CIVIL PROJECT - BRIDGEWORK

FINALISTS

WODEN CONTRACTORS;
CIVIL BRIDGE & WHARF P/L

PROJECT MOLONGLO LINK BRIDGE AND
TRUNK SEWER PROJECT



CIVIL PROJECT - BRIDGEWORK

FINALIST

GUIDELINE ACT

PROJECT STRENGTHENING OF BRIDGE 2074

FINALISTS



CIVIL PROJECT - HYDRAULIC

FINALIST

GUIDELINE ACT

PROJECT SEWER PUMP STATION 2



CIVIL PROJECT - HYDRAULIC

FINALIST

CAPITAL HYDRAULICS & DRAINS PTY LTD

PROJECT CALVARY HOSPITAL CAR PARK



CIVIL PROJECT - HYDRAULIC

FINALIST

BOST

PROJECT MUGGA LANE RMC HYDRANT LINE & ASSOCIATED WORKS



CIVIL PROJECT - ROADWORKS

FINALIST

CHINCIVIL

PROJECT BARTON HIGHWAY INTERSECTION IMPROVEMENTS AT MCINTOSH CIRCUIT



CIVIL PROJECT - ROADWORKS

FINALIST

CORD CIVIL

PROJECT DICKSON GROUP CENTRE INTERSECTIONS UPGRADE



CIVIL PROJECT - SUBDIVISION

FINALIST

HUON CONTRACTORS PTY LTD

PROJECT GOOGONG NH1A - STAGE 4, 5 AND 6

FINALISTS



CIVIL PROJECT - SUBDIVISION

FINALISTS

BMD CONSTRUCTIONS;
BLACK MOUNTAIN CONSTRUCTION
ASSURANCE

PROJECT MONCRIEFF EAST ESTATE - STAGES 1A, 1B
AND 5



CIVIL PROJECT - OTHER

FINALIST

COMPLEX CIVIL

PROJECT BUNDA ST SHAREWAY



CIVIL PROJECT - OTHER

FINALIST

GUIDELINE ACT

PROJECT BULK GOODS WAREHOUSE



CIVIL PROJECT - OTHER

FINALIST

CAPITAL HYDRAULICS & DRAINS PTY LTD

PROJECT CALVARY HOSPITAL CAR PARK



CIVIL PROJECT - OTHER

FINALIST

WODEN CONTRACTORS

PROJECT BOWEN PLACE CROSSING



CIVIL PROJECT - OTHER

FINALIST

BOST PTY LTD

PROJECT MUGGA LANE RMC A2AC LANDFILL CELL

FINALISTS



CIVIL PROJECT - OTHER

FINALIST

BMD CONSTRUCTIONS

PROJECT TUGGERANONG BUS DEPOT ACTION



CIVIL PROJECT - OTHER

FINALIST

CORD CIVIL

PROJECT SULLIVAN'S CREEK WEIR IMPROVEMENTS



CIVIL PROJECT - OTHER

FINALIST

CAPITAL HYDRAULICS & DRAINS PTY LTD

PROJECT CALVARY HOSPITAL CAR PARK

"mate, that was bloody close!"

Don't just walk by,

TELL US!

National Near Miss Reporting Line



CIVIL WORK HEALTH & SAFETY

FINALIST

DOWNER

PROJECT NEAR MISS HOTLINE



CIVIL WORK HEALTH & SAFETY

FINALIST

CANBERRA CONTRACTORS

PROJECT THROSBY RESIDENTIAL ESTATE - STAGE 2



CIVIL WORK HEALTH & SAFETY

FINALIST

GUIDELINE ACT

PROJECT CONSTITUTION AVENUE UPGRADE

FINALISTS



CIVIL WORK HEALTH & SAFETY

FINALIST

HUON CONTRACTORS

PROJECT BARTON HIGHWAY/GUNDAROO DRIVE
INTERSECTION SIGNALISATION



COMMERCIAL SUSTAINABLE CONSTRUCTION

FINALIST

BREMA GROUP

PROJECT CANBERRA CENTRE DFDG MALL



CIVIL SUSTAINABLE CONSTRUCTION

FINALIST

DOWNER

PROJECT LOW CARBON ASPHALT



COMMERCIAL BEST USE OF MATERIAL EXTERIOR

FINALIST

DELNAS METAL ROOFING

PROJECT CASEY MARKET TOWN



COMMERCIAL BEST USE OF MATERIAL EXTERIOR

FINALISTS

RED8 ROOFING;
HINDMARSH CONSTRUCTION

PROJECT BULK GOODS WAREHOUSE



COMMERCIAL BEST USE OF MATERIAL INTERIOR

FINALIST

J & J INTERIORS PTY LTD

PROJECT CANBERRA AIRPORT HOTEL

FINALISTS



COMMERCIAL BEST USE OF MATERIAL INTERIOR

FINALIST

MONARCH BUILDING SOLUTIONS

PROJECT NATIONAL CONVENTION CENTRE - MAIN FOYER



LANDSCAPE DESIGN & CONSTRUCTION

FINALIST

DIG - IT LANDSCAPES

PROJECT AMAYA APARTMENTS - LANDSCAPING



LANDSCAPE DESIGN & CONSTRUCTION

FINALIST

GEOCON

PROJECT OBSERVATORY LIVING



LANDSCAPE DESIGN & CONSTRUCTION

FINALIST

ABLE LANDSCAPING PTY LTD

PROJECT WRIGHT RESIDENTIAL ESTATE STAGE 1B



LANDSCAPE DESIGN & CONSTRUCTION

FINALIST

RAM CONSTRUCTIONS

PROJECT CAMPBELL 5 OPEN SPACE



LANDSCAPE DESIGN & CONSTRUCTION

FINALIST

ABLE LANDSCAPING PTY LTD

PROJECT CHARLES WESTON SCHOOL (COOMBS P-6 SCHOOL)

FINALISTS



LANDSCAPE DESIGN & CONSTRUCTION

FINALISTS

ABLE LANDSCAPING PTY LTD
WODEN CONTRACTORS

PROJECT BOWEN PLACE CROSSING

ONLINE REGISTRATIONS

for industry based courses now available with MBA Group Training.

MBA Group Training provides learning opportunities through industry training and education services. Safe work practices within the industry are a priority for MBA Group Training and expert advice is available in a range of areas including occupational health and safety requirements, industry codes of practice, education and training.

MBA Group Training has created significant employment opportunities throughout the industry as well as provided many employer benefits. Building industry training courses are conducted throughout Canberra and the region.

INDUSTRY TRAINING COURSES

MBA Group Training offers a wide range of industry training options. All training is provided by qualified trainers with industry experience. Many of our training programs are approved by the ACT Building and Construction Industry Training Fund Authority which reimburses up to 70% of course costs for eligible course participants, upon successful completion of the course.

mba.org.au

For more information about training opportunities contact MBA Group Training:

T 02 6175 5900

F 02 6280 9118

E training@mba.org.au

www.mba.org.au/training



ASBESTOS AWARENESS

WORKING AT HEIGHTS

ELEVATED WORK PLATFORM

CONFINED SPACES

GENERAL CONSTRUCTION INDUCTION

OPERATE A FORKLIFT TRUCK

EXPLOSIVE POWER TOOLS

ERECT AND DISMANTLE SCAFFOLDING

BULLYING & HARASSMENT

HEALTH & SAFETY REPRESENTATIVES

MANUAL HANDLING

OPERATE A MATERIALS HOIST

LICENCE TO PERFORM DOGGING


CERTIFICATE IV IN BUILDING & CONSTRUCTION



Monarch Building Solutions | Consistently awarded for excellence in retail, commercial and residential construction



MonarchBuildingSolutions.com.au | T 02 6162 0232

@monarch.cbr | Find us on  ACT LIC BUILDER 200697

