

# winning homes<sup>®</sup>

MASTER BUILDERS ASSOCIATION OF THE ACT

ALL THE WINNERS  
FROM THE 2016  
MASTER BUILDERS & CBUS  
EXCELLENCE  
IN BUILDING  
AWARDS

ANOTHER AMAZING  
**HOUSE**  
OF THE **YEAR**

THE ESSENTIAL  
**DISPLAY**  
**HOME**  
GUIDE

ISSN 1839-1303



\$9.95 incl GST







# 6175 9600

## Your One Stop Concrete Shop



- Pre-mix Concrete
- Steel Supplies
- Specialising Mixes
- Exposed Aggregates
- Member of the Master Builders

- Delivery to the ACT, Queanbeyan & Surrounding Districts
- Truck Sizes from 0.2M<sup>3</sup> - 8.5M<sup>3</sup>
- Liquid Colour System

- Modern High Tech Plant
- 45 Years in Business
- Experienced Operators & Professional Service

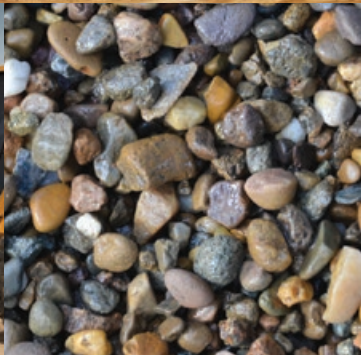
# [www.elvingroup.com.au](http://www.elvingroup.com.au)

Mitchell Depot - 7 Cheney Pl Mitchell | Hume Depot - 15 Alderson St Hume





## FROM THE WEST BELCONNEN **QUARRY** TO **YOUR** **DOOR**



# THARWA SANDS

EST 1974

## THARWA SANDS PRODUCTS AND SERVICES

**WASHED RIVER SAND** is clean, dust free, and meets ACTEW specifications for filter and bedding sand. It is perfect for high MPA concrete. Our sand is cleaned through a specialized washing process to remove all the silt and clay. This avoids a dust problem and eliminates compaction.

**HORSE ARENA SAND** Our sand is perfect for horse arenas or for racetracks as it is low dust, hard wearing and gentle on the horse's legs.

**RIVER PEBBLE** is a product that has naturally round stones, with no sharp edges and it comes in a mixture of soft natural colours. Our River Stone is double washed and is graded into 4 sizes of pebble and stones - there is a size available that is perfect for all landscaping needs.

**GINNINDERRA RED GRANITE** The iconic Ginninderra Red Granite is used throughout the region and can be seen in nearly every street in Canberra. It is used daily for driveways, car parks, nature strips, medium strips, road verges, pathways, bicycle tracks, gardens and around trees.

**RAMMED EARTH WALLS AND CONSTRUCTION** Ginninderra Red Granite is the perfect product to use in the construction of rammed earth structures such as walls, fireplaces, landscape features or an entire home. The natural appearance of rammed earth walls built with our red gravel is unmatched by conventional building products and it produces a finish that is extremely attractive. Plus it is an environmentally responsible building medium.

**TENNIS COURT GRAVEL** The Tennis Court Gravel is a finer grade of the main Ginninderra Red Granite product. It is specially screened to order, so that all larger stones are removed so that it forms an excellent surface for gravel tennis courts, in the old clay court fashion.

**GINNINDERRA 15MM ORNAMENTAL STONE** is a chunkier sized product and is used as a cost effective way to replace scoria, and it has a softer more natural appearance.

**TOPSOIL** is a blended topsoil that meets B and C type specification and is suitable for gardens, lawns and ovals.

**LANDFILL ACCEPTED** Clean fill products that are accepted include: Clean fill, VENM Virgin Excavated Natural Material, soil, clay, sand and rock.

**BUY CLEANFILL VENM** (Virgin Excavated Natural Material) is a cost effective material that can be used for all fill applications. It can be used to fill behind retaining walls or to form a foundation for gardens or under driveways.

Discuss your **next project** with one of our experienced team members **02 6254 0111**

[www.TharwaSand.com.au](http://www.TharwaSand.com.au)





*Cbus is Australia's biggest industry super fund for the building, construction and allied industries.*

—  
WE ARE PROUD TO SPONSOR THE  
2016 MASTER BUILDERS AND CBUS EXCELLENCE  
IN BUILDING AWARDS, RECOGNISING PROJECTS  
AND PROGRESS IN THE A.C.T.  
—

# Congratulations

CONTACT CBUS SUPER FUND:



1300 361 784



[www.cbussuper.com.au](http://www.cbussuper.com.au)



[cbusenq@cbusmail.com.au](mailto:cbusenq@cbusmail.com.au)



Read the relevant Cbus Product Disclosure Statement to decide whether Cbus is right for you. Contact 1300 361 784 or visit [www.cbussuper.com.au](http://www.cbussuper.com.au) for a copy. Cbus' Trustee: United Super Pty Ltd ABN 46 006 261 623 AFSL 233792 Cbus ABN 75 493 363 262.



# Build a super future for your business

THE 2016 MASTER BUILDERS AND CBUS EXCELLENCE IN BUILDING AWARDS PROUDLY ACKNOWLEDGES SIGNIFICANT PROJECTS AND PROGRESS IN THE A.C.T. SO IT IS FITTING THEN TOO, THAT AS EXPERTS IN THE SUPER INDUSTRY, CBUS SHARES INFORMATION THAT A BUSINESS LIKE YOURS MIGHT NEED TO KNOW WHEN IT COMES TO MANAGING THEIR SUPERANNUATION RESPONSIBILITIES.

## Compulsory super payments

As an employer, it is mandatory to pay superannuation on behalf of your employees. Under Superannuation Guarantee legislation, the current super rate payable to your employees is 9.5% of ordinary time earnings (OTE).

However, this rate may be higher if Industrial Agreements or Awards are in place.

Super guarantee contributions must be paid for employees who are:

- 18 years old or over, and
- earn \$450 or more (before tax) in a month.

You can check the ATO website for superannuation for businesses for more information about who you need to pay super for as an employer.

## Choosing your default super fund

A default super fund is the super fund that your business nominates as the best fit to take care of the superannuation needs for all your employees. It must be a 'complying fund' which means it is registered with APRA to offer an approved MySuper product. It's important to choose a fund that acts in the best interests of your business, and your employees.

By choosing Cbus as your default super fund, you'll join the leading industry super fund for the construction, building and allied industries. The Cbus website has a dedicated page about making Cbus your default super fund, including a contact form to request help from the Employer Services team.

## Giving employees 'choice' of super fund

When a new employee is eligible to choose their own super fund, you need to provide

them with a Standard Choice Form within 28 days from their start date. If your new employee doesn't elect to choose a specific super fund, you must pay their super contributions into your nominated 'default' fund.

## Keeping your records

As a business, you need to keep the following records in English for five years:

- records showing the Standard Choice Form has been provided to all eligible employees
- details of employees who do not have to be offered a Standard Choice Form
- documents issued by the super fund showing you have made super contributions to an employee's chosen fund (for example, annual record of contributions statement)
- records confirming that your chosen default super fund is a complying fund and offers a MySuper product. This is usually found online, on the super fund's website.

## Supplying Tax File Numbers

When an employee provides you with their Tax File Number (TFN), by law as their employer - you're required to provide this information to their super fund within 14 days or alternatively, when you make their first super contribution.

If a TFN is not provided, your employee will be unable to make any additional personal super contributions and they may pay more tax on their super as a result.

## Understanding 'SuperStream'

Under the 'Stronger Super' legislation, businesses of all sizes are now required to make super contributions for their employees electronically. SuperStream is the approved standard for submitting super information and payments online. It is Government initiative aimed at simplifying super for employers.

- Businesses with 20 or more employees should already be paying super via an online payment system since 31 October 2015.
- Businesses with 19 or less employees need to start paying super contributions via an online payment system by 30 June 2016.

*\*If you are unsure about the SuperStream rules, or need help getting set up on an approved payment system, just call Cbus Super Fund on 1300 361 784.*

## Cbus super solutions for businesses

Cbus offers two options when it comes to online payment systems for businesses. Both are available for Cbus employers to use at no cost, and both will allow you to meet your obligations as an Employer under SuperStream.

### Cbus Clearing House

The Cbus Clearing House\* is an online payment tool provided through Westpac, which allows you to submit multiple employee super contributions into multiple super funds, including Cbus, using one data file and one payment. Super contributions are then received, and distributed to the various super funds on your behalf, helping you to save time on paying super for each of your employees.

\*The Clearing House is provided by Westpac Banking Corporation for Cbus employers.

### Employer SuperSite

Employer SuperSite is an online employer account and payment facility that allows you to lodge contribution returns and make super payments using BPAY®, Direct Debit or Electronic Funds Transfer (EFT). It also allows you to manage your employer super account online with the ability to view and update your super records, including employee details plus full transaction history and payment reports.

## Salary sacrifice contributions

One of the main ways for your employees to boost their super balance is to make salary sacrifice contributions.

Salary sacrifice is an agreement made between an employer and an employee where the employer pays an amount of before-tax salary into the employee's super account. These salary sacrificed super contributions are currently taxed at a standard rate of 15%.

However, the Government places limits on the amount which can be contributed to an employee's super each year, so it's important for employees to monitor these contribution amounts to make sure they don't exceed their cap.





# CONTENTS

7	WELCOME MESSAGE
11	WINNERS
72	JUDGES' COMMENDATIONS
94	FINALISTS

## FEATURE

78	THE ESSENTIAL NEW HOME GUIDE
109	THE DEAKIN CHARITY HOUSE PROJECT

Custom Built Home more than 350m<sup>2</sup> - Finalist  
This home was created by Classic Constructions



## 2016 MASTER BUILDERS & CBUS EXCELLENCE IN BUILDING AWARDS

WINNING HOMES 2016 IS PRODUCED & PUBLISHED BY  
THE MASTER BUILDERS ASSOCIATION OF THE ACT.

### MASTER BUILDERS ASSOCIATION OF THE ACT

DIRECTOR COMMERCIAL OPERATIONS  
David Leitch

GRAPHIC DESIGN  
Richard Boyce

EVENTS CO-ORDINATOR  
Elissa Campbell

HUB COMMUNICATIONS  
ADVERTISING PARTNER

SALES & MARKETING  
Chris O'Brien

OFFICE MANAGER  
Juanita Lee

GRAPHIC DESIGN  
Michelle Donaldson / Laura James

All correspondence to:  
PO Box 1211 Fyshwick ACT 2609

T 02 6175 5900  
E [dleitch@mba.org.au](mailto:dleitch@mba.org.au)  
W [www.mba.org.au](http://www.mba.org.au)

© This publication is copyright. No part of it may be reproduced, stored in a retrieval system or transmitted in any form or by any means including electronic, mechanical photocopy, recording or otherwise without the permission of the Master Builders Association of the ACT. Disclaimer: readers are advised that the Master Builders Association of the ACT cannot be held responsible for the accuracy of statements made in advertising and editorial, nor the quality of the goods or services advertised. Opinions expressed throughout the publication are the contributors own and do not necessarily reflect the views or policy of the Master Builders Association of the ACT.



MASTER BUILDERS  
AUSTRALIAN CAPITAL TERRITORY

ACT WINNING HOMES 2016



# Architectural style. Built for life.

A home is more than a backdrop to life. It's a place where families grow, laughter is shared and memories are made.

At McDonald Jones, we create stunning architecturally designed homes that bring together stylish functionality and clever thinking to enhance your way of living.

And that's not all. Every one of our homes is built with a simple philosophy in mind. We'd love to live there, too. So you can be sure your home, and everything that comes with it, will stay true for many years to come.

Walk through and experience our modern, award winning display homes, today.



**PROUDLY BUILDING THROUGHOUT  
CANBERRA AND SURROUNDING REGIONS.**

**CANBERRA REGION DISPLAY HOMES:**

WRIGHT – CORNER STEVE IRWIN AVE & LINDSAY PRYOR ST.

GOOGONG – CORNER BONARBA LINK & INSLEY ST.

MONCRIEFF – BELLHOUSE CRESCENT.

For further details of our display homes, as well as inspiration for your new home, visit our website



**mcdonald jones**  
YOUR HOME, YOUR DREAM

[mcdonaldjoneshomes.com.au](http://mcdonaldjoneshomes.com.au)  
Ph: 02 6143 2000

Images may depict fixtures, finishes and features not supplied by McDonald Jones such as landscaping, fireplaces, alfresco decking, paving, fencing, swimming pools and furnishings. The photos may also depict optional variations to the standard home which incur additional charges. For detailed home pricing, please talk to one of our consultants. McDonald Jones Homes (Canberra) Pty Ltd ABN 64 150 533 298 - ACT Builder's Licence Number: 20121296 - Architect Reg No: 2470.





[www.capitalveneering.com.au](http://www.capitalveneering.com.au)

ph: 02 6299 1557 | fax: 02 6299 1979

email: [info@capitalveneering.com.au](mailto:info@capitalveneering.com.au)

**Capital Veneering** has steadily evolved from a boutique veneer pressing and furniture making workshop to a large enterprise. The growth of the company has resulted in the refinement of systems and the purchase of more efficient, state of the art software and machinery. This allows Capital Veneering to fitout large scale commercial projects to agreed schedules while maintaining the highest quality finish and personal service required to work in customers homes.

Capital Veneering can provide a full range of services from design and project management to manufacture and installation which makes us your one stop kitchen and bathroom renovation shop.

**Visit our showroom by appointment @** Unit 3-4, 67-71 Bayldon Road Queanbeyan, NSW 2620



- 3D computer generated design and shop drawings
- Custom made furniture
- Residential joinery
- Corporate and government fitouts
- Shop and club fitouts
- Veneer pressing
- Clear lacquer and polyurethane paint finishes
- Personal gifts
- Colourback glass
- Corian and solid surface fabrication







MASTER BUILDERS ASSOCIATION OF THE ACT WOULD LIKE TO THANK THE FOLLOWING VALUED SPONSORS AND SUPPORTERS OF THE 2016 MASTER BUILDERS & CBUS EXCELLENCE IN BUILDING AWARDS - CELEBRATING EXCELLENCE IN THE BUILDING AND CONSTRUCTION INDUSTRY

## NAMING RIGHTS SPONSOR



## MAJOR SPONSORS



Lennox  
Commercial  
Vehicles



## ASSOCIATE SPONSORS



## SUPPORTING SPONSORS



# WELCOME



Not so very long ago 'the great Australian dream' of home ownership rested on a modest house on a modest block with progressive renovations and additions over a life time. The home was a true labour of love that started with the bare bones and expanded progressively, often without much of a master plan. A proper garage to replace the carport or another bedroom and bathroom out the back. Maybe a pool room come teenagers retreat and so on

depending on family composition and budget. The end result was often a much loved Frankenstein 'castle' with flaws and faults that were plain for all to see but ourselves. Indeed the flaws were part of the narrative of the home, part of the charm.

Fast forward to 2016.

How the world has changed. Today our lifestyle at home often advances through sale and acquisition rather than incremental renovation.

This is a good thing!

A friend bought an ex-govie in an inner suburb in Canberra. We went over the plans for hours trying to work out the best renovation. It took a sensible builder friend to suggest the knock down rebuild. The new plan came at great cost to the local hardware store and our 'home handyman' pride, but the end result was more than worth it.

As you will see in these pages, the design dividend of modern homes is profound. It starts with energy efficiency and builds quickly to every day amenity. It incorporates modern comforts and materials with layouts that deliver spaces ranging from the striking to 'kick your shoes off' comfortable. The home is immediately an inviting and comfortable place to share with family and friends. Gone is the long term incremental construction site that we endured rather than enjoyed. Sure, we miss the charm of Uncle Ted's first tiling job and the shadow play of the wall we plastered together, but now we get so much more from a well plan remodelling job or knock down rebuild.

Home is a place you come to relax and connect with the people who are important, rather than the second job with a never ending list of projects that are at best disruptive and at worst destructive.

Home is open living spaces that naturally draw family and friends together. People in the kitchen connect with those in the living room which connects seamlessly to the outdoor BBQ and entertaining areas. Comfortable, efficient inclusive spaces that flow. twelve fantastic examples can be seen at our Master Builders Display Village at Moncrieff.

With a new home it's all there to enjoy from day one. No walls to knock down or rebuild, no bathroom or kitchen renos, no dust, dirt, dollars and delay.

Suddenly there's time for new projects. Home brew anyone?

KIRK CONINGHAM OAM  
EXECUTIVE DIRECTOR  
MASTER BUILDERS ASSOCIATION OF THE ACT



# Build something great™ with Boral products



Boral is a major player in the construction materials industry, with around 12,000 employees operating across more than 700 sites in Australia, Asia and North America.

Working as one global team, we are developing new products and better ways of getting them to our customers across the world.

We are playing a key part in creating a sustainable future for our industry.

**[www.boral.com.au](http://www.boral.com.au)**

Boral is a registered trademark of Boral Limited or one of its subsidiaries.



# 4 Reasons why you should use Asset Construction Hire

It's no secret ACH is now the market leader in construction equipment hire in the ACT region. This success is largely due to the commitment found in four main areas of the business. So when the question is asked 'Why use Asset Construction Hire?' the answer is simple...

## 1. Product Range

An ever-growing range of products continue to meet the demands of ACH client requests. Four years into existence ACH has built a fleet totalling 370 units. That number is expected to exceed 450 units by the end of 2016.

ACH current fleet consists of;

- > 250 electric scissors lifts across all sizes and functionality
- > 40 rough terrain diesel scissor lifts
- > 60 rough terrain knuckle and straight booms
- > 20 fork lifts and tele-handlers

ACH have built a range of speciality equipment which includes; spider knuckle lifts, bioenergy booms, electric rough terrain scissors, tipper trucks and work utes. This diverse range of products, built from our customers' needs, allows ACH an advantage over other national hire companies.

## 2. Sales Team

ACH have a dedicated sales who are committed to solving problems for their customers. Any issues are considered and resolved with competency, care and timeliness.

The well-respected reputation of the account managers is qualified by their actions. From general questions to site inspection, the team prides themselves on being there for their customers.

With 40 years of combined experience in client service and a 'customer comes first' attitude, the company is one, people know they can rely on.

## 3. Operational Support

Many factors are considered when deciding which company to hire construction equipment from. One of those factors is how well the equipment is maintained and how quickly will the company respond when a break down or problem occurs.

ACH has five full time mechanics, three based at their workshop and two on the road completing repairs and mandatory inspections. ACH understand the cost to the customer if down time occurs due to faulty equipment and have on hand, fully qualified plant and auto mechanics to resolve problems quickly and accurately.

## 4. Administration Team

Communicating accurate financial transaction for every hire saves time and frustration. This is why ACH has a team who understand the importance of collecting accurate and concise information relating to the hire, which is speedily converted into an invoice—meaning the customer has all the relevant information at hand.

The paper work will be completed smoothly and when a query is raised the team at ACH will listen and respond quickly.

*"We have listened to our customers and have established our systems based on what they need and want. I believe the client shouldn't have to problem solve that's our job and I have the team and equipment that can deliver on all accounts"*

ACH Founder, Darrell Leemhuis

## Construction Hire Range:

- > Electric Scissor Lifts
- > Knuckle Booms
- > Stick Booms
- > Rough Terrain Scissor Lifts
- > Electric & Hybrid Booms
- > Mast Lifts
- > Material Handling
- > Aluminium Scaffold
- > Truck Mount Booms
- > Spider Knuckle Lifts
- > Towable Booms
- > Towable Scissors
- > Lighting Towers
- > Generators
- > Compressors
- > Rollers
- > Glass Handling
- > Plant Equipment
- > Site Facilities



**ASSET** | CONSTRUCTION  
**HIRE**  
PTY LTD

*"Let us be an asset to your business"*

**1800 361 383**  
**www.assethire.com.au**





**ryleho**  
GROUP Pty Ltd

*the next generation*



Custom Made • Timber Windows • Timber Door Systems  
• Designer Entry Doors • Thermal Efficient • Double Glazing



**Quality homes**  
are made with quality products...

[www.ryleho.com.au](http://www.ryleho.com.au)

Factory/Showroom: 78-82 High Street Queanbeyan | Phone: 02 6297 7811 | Email: [info@ryleho.com.au](mailto:info@ryleho.com.au)  
Open Monday - Friday 8 am - 4:30 pm Saturdays 9 am - 1 pm





INTRODUCING THE  
TWENTY SIXTEEN  
**AWARD  
WINNERS**



# TWENTY SIXTEEN HOUSE OF THE YEAR



## WINNER

HOUSE OF THE YEAR & CUSTOM BUILT HOME & MORE THAN 350M<sup>2</sup>

**COMPANIES:** BETTER BUILDING SERVICES  
DNA ARCHITECTS  
SUGAR DESIGNS

**LOCATION:** GOOGONG, NSW

A reimagining of the classic country retreat, the Wells Place Project blends the best of liveability, technology and sustainability to create a home that stands the test of time.

Sited for spectacular views and great solar passive advantage, the home's design features light and airy indoor spaces that integrate seamlessly with the surrounding countryside. The owners can take in the breathtaking natural beauty surrounding them from all angles.

Combining colour, texture and contour, Better Building Services has created a home that complements its landscape, with a modest exterior that belies the grandeur and luxury found within its walls.







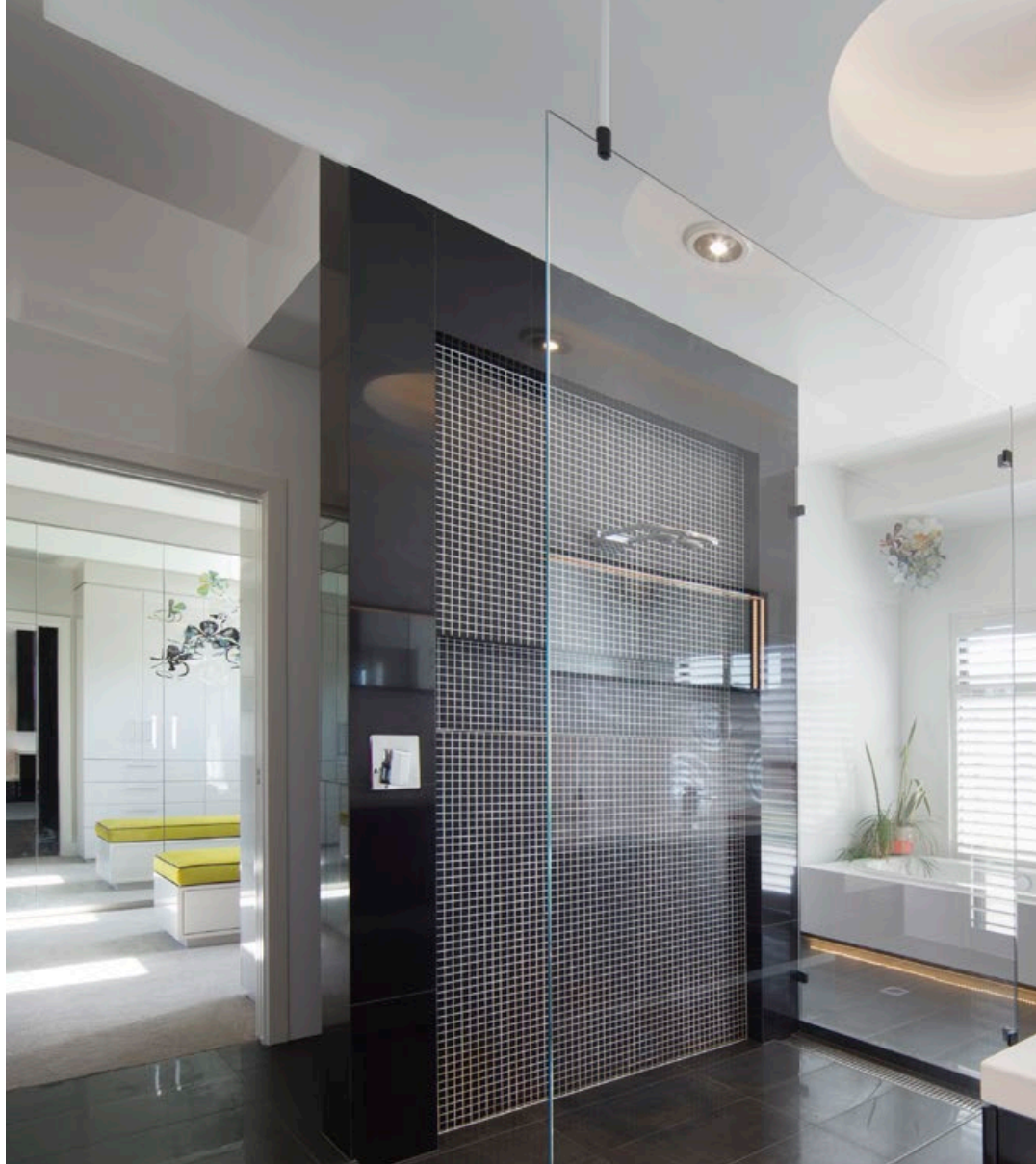
A REIMAGINING OF THE CLASSIC  
COUNTRY RETREAT, THE WELLS PLACE PROJECT  
BLENDS THE BEST OF LIVEABILITY, TECHNOLOGY AND  
SUSTAINABILITY TO CREATE A HOME THAT STANDS  
THE TEST OF TIME.



**HOUSE**  
of the Year

Designed to protect the home's owners from the elements – particularly the prevailing breezes common to exposed rural properties – a series of internal courtyards provide shelter, privacy and perfect spots to catch the sun's rays.

The home's cleverly-designed wings for guests also offer privacy and a sense of space, while other wings house the indoor swimming pool and living areas. Each wing can be segregated from the rest of the house.



**Sugar**  
DESIGNS

## MULTINATIONAL AWARD WINNING DESIGNER.

Simply creating unique designs isn't the only part of our purpose; we keep our finger on the pulse researching and collating the latest design materials, products and industry knowledge to ensure our designs maintain their uniqueness whilst being cost effective and marketable. Maybe you could say it's because we take a boutique approach to every design that makes the difference... taking an ordinary design and making it extraordinary!

p (02) 6161 8288 e [helen@sugardesigns.com.au](mailto:helen@sugardesigns.com.au) [www.sugardesigns.com.au](http://www.sugardesigns.com.au)

**NATIONAL HAIRDRESSING INDUSTRY AWARDS WINNER**  
Best Hairdressing Salon Design, Axis Hairdressing - Braddon ACT





THE HOME OWNERS HAVE FALLEN  
IN LOVE WITH THE PEACE AND  
TRANQUILLITY OF COUNTRY  
LIVING, AND WORKING WITH  
**BETTER BUILDING SERVICES**  
HELPED THEM ACHIEVE THEIR  
DREAM HOME.



# SIMPLY CERAMICS

- Tile & Stone Fixers -



Domestic ♦ Commercial ♦ Certified Waterproofer



PO Box 1601 Queanbeyan NSW 2620

Call 0411 542 141

ABN 88 881 459 948



Virtually self-sufficient, the home demands minimal maintenance, collects its own rainwater and power from the sun, and cleans and recycles its own wastewater.

The use of natural materials lends the residence a strong connection to the site. Natural stone was chosen for retaining walls, while feature columns and internal courtyard planters ground the house to the earth. The brick façade enhances the building's horizontal lines and pitched roof.

The workmanship in this home is of an exceptional quality. While each stage of the construction posed challenges, every effort has been expended to ensure a perfect finish for the lucky retired couple, who are delighted with their 'forever' home.

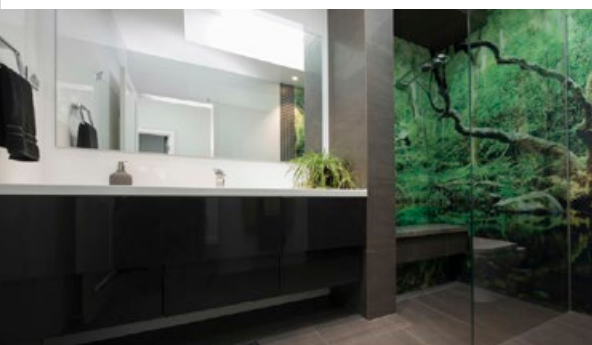
The home owners have fallen in love with the peace and tranquillity of country living, and working with Better Building Services helped them achieve their dream home.





# Your dream home

## IS OUR BUILDING MISSION



At Better Building, we know every client is different. Your family, your lifestyle and your priorities will shape the kind of home you want. We specialise in building high quality custom-designed homes. Your own team of professional architects, interior designers, bathroom designers, kitchen designers and landscape architects will take your ideas and turn them into a practical and inspiring home that's yours alone.

**We are a respected family owned multiple award winning company with over 20 years experience and long time members of both the HIA and MBA.**

T 02 6280 7888 E [info@betterbuilding.com.au](mailto:info@betterbuilding.com.au) [www.betterbuilding.com.au](http://www.betterbuilding.com.au)

ACT Licence #2005672 NSW Licence #178378C ABN 38 113 350 440

## You are in good hands



MASTER BUILDERS  
AUSTRALIAN CAPITAL TERRITORY







# WINNER

CUSTOM BUILT HOME: 250M<sup>2</sup> - 350M<sup>2</sup>

**COMPANIES:** CHAMPNESS BUILDERS PTY LTD  
SUGAR DESIGNS  
**SUBURB:** HACKETT

A life-long car enthusiast, the owner of this stunning layered house was looking for a safe and secure space to showcase his collection. The avid entertainer also wanted open living spaces that connected with the outdoors for intimate or large gatherings, and a design that would make the most of the home's site at the foothills of a Canberra mountain reserve. The result? A complex, sophisticated home that has met the client's brief and created a perfect place for both man and automobile.





# Runner-way DEALS

## ON VOLKSWAGEN RUNNER VANS



MY16 Transporter Runner

**\$32,990** DRIVEAWAY\*

- ✓ 2.0L 75kW TDI250 Manual
- ✓ Colour touch screen audio with Bluetooth® audio streaming
- ✓ Cruise control
- ✓ Rear parking sensors
- ✓ Lifting rear tailgate
- ✓ 5.8m³ cargo capacity
- ✓ 1,266kg payload‡



MY16 Caddy Van Runner

**\$23,990** DRIVEAWAY\*

- ✓ 1.2L 62kW TSI160 Manual
- ✓ Colour touch screen audio with Bluetooth® audio streaming
- ✓ Cruise control
- ✓ Rear barn doors
- ✓ 3.2m³ cargo capacity
- ✓ 779kg payload‡



MY16 Crafter MWB Runner

**\$39,990** DRIVEAWAY#

- ✓ 2.0L 80kW TDI300 Manual
- ✓ Bluetooth® phone connectivity
- ✓ Cruise control
- ✓ Rear barn doors
- ✓ 9m³ cargo capacity
- ✓ 1,486kg payload‡

Find out more at [vwoffers.com.au](http://vwoffers.com.au)

Ask About our special offers for MBA members.

Your Volkswagen Partner

**Lennox Volkswagen**

150 Melrose Drive, Phillip 17000563

Tel. 02 6282 2022 [www.lennoxvolkswagen.com.au](http://www.lennoxvolkswagen.com.au)



**Commercial  
Vehicles**

\*Campaign driveaway price of \$23,990 is for new MY16 Caddy Van Special Edition 'Runner' TSI160, manual, white (no added options) only. \*Campaign driveaway price of \$32,990 is for new MY16 Transporter Van Special Edition 'Runner' TDI250, manual, white (no added options) only. \*Campaign driveaway price of \$39,990 is for new MY16 Crafter MWB Van Special Edition 'Runner' TDI300, manual, white (no added options) only. \*\*Offer applies to stock vehicles only. While stocks last. Excludes Government, fleet and rental buyers. Not available in conjunction with any other offer. Volkswagen Group Australia reserves the right to change, modify or extend this offer. †Payload is defined as the Gross Vehicle Mass (GVM) minus the Kerb Mass. ‡Payload is the maximum combined weight of occupants, cargo, added structures and tow ball down weight (when towing). GVM must not be exceeded. Bluetooth® is a registered trademark of Bluetooth® SIG Inc. Not all devices will be compatible and functionality will vary depending on the device.



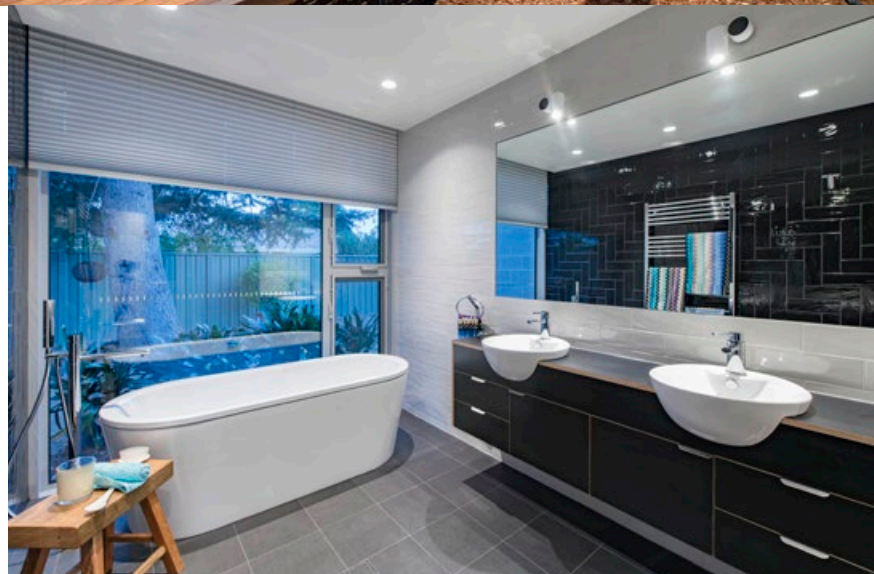


# WINNER

CUSTOM BUILT HOME: 150M<sup>2</sup> - 250M<sup>2</sup>

**COMPANY:** EWER CONSTRUCTIONS  
**SUBURB:** CHIFLEY

This new single-storey home was elevated to catch the sun's northern rays. The design maximises natural daylight and solar passive gain, while enhancing cross-ventilation throughout. Robust and durable finishes complement the architectural design, such as the custom-folded external zinc cladding, which drapes over the complex steel work supporting the wedge-shaped roof line. The entry gallery of burnished concrete is warmed with hydronic heating, and creates a thermal chimney that cools the house in summer. Public and private spaces are divided by a central courtyard and linear timber decks. The result is a home that is as spectacular as it is sustainable.





Australia Wide Distribution



# SEEARS

## WORKWEAR

MSA AUTHORISED DEALER



Master Builders 2010  
Supplier of the Year Winner



**Canberra's largest workwear outlet.**  
Your one stop workwear and safety shop.

Full range of:

- > Harnesses
- > First aid kits
- > Safety equipment
- > Protective clothing
- > Corporate and trade uniforms
- > Wide range of protective gear
- > Workwear for all trades

**Order now**

Trade and Master Builder member discounts apply

# 02 6280 4111

[www.seearsworkwear.com.au](http://www.seearsworkwear.com.au)



## SEEARS

### WORKWEAR

60 Barrier Street  
Fyshwick ACT  
Tel: 02 6280 4111  
Fax: 02 6280 9111





# WINNER

CUSTOM BUILT HOME: LESS THAN 150M<sup>2</sup>

**COMPANIES:** 360 BUILDING SOLUTIONS  
THE MILL ARCHITECTURE & DESIGN

**LOCATION:** COOMBS

The client's brief was clear: create a warm and inviting family home that achieves the best energy performance possible on a limited budget. Making the most of the site and local climate, the home boasts an eight star energy rating. Featuring sundrenched living spaces on the ground floor, and private retreats on the upper storey, the home is quiet and sunny. Living and dining spaces are divided by a feature brick wall, with the kitchen flowing to the alfresco area and terraced garden beyond. Three north-facing bedrooms, a study and generous bathroom are a smart use of space and create one easy-living home.





“Simplicity is the ultimate sophistication.”

Leonardo da Vinci.

For assistance with your next project, contact Miele's dedicated team of industry specialists in our Project Division, or call into any of our Miele Experience Centres.  
[miele-project-business.com.au](http://miele-project-business.com.au)

**20**  
YEARS

German engineered and tested to the equivalent of 20 years' average usage.

Terms and Conditions apply. Visit [www.miele20years.com.au](http://www.miele20years.com.au)

**Miele**  
IMMER BESSER

VIC 9765 7436 NSW 8977 4235 QLD 3632 2471 SA 8352 9532 WA 9286 7835 NZ 573 1269





# WINNER

## EMERGING RESIDENTIAL BUILDER OF THE YEAR

**DEAN STRUYS**

**COMPANY: 360 BUILDING SOLUTIONS**

After completing Year 12 in 2003, Dean embarked on a carpentry apprenticeship which laid the foundations for a career in the construction industry. After completing a Certificate IV in Building and Construction in 2008, Dean began building homes for family and friends before launching 360 Building Solutions. Dean is passionate about building, and has a special interest in environmentally-sustainable design. As Dean continues to advance his knowledge in his chosen profession, he has become a keen contributor to design conversations and continues to innovate to help his customers achieve their dream home.







# WINNER

## YOUTH PARTICIPATION AND TRAINING

**CHRISTOPHER WALMSLEY**

**COMPANY: WALMSLEY BUILDING SOLUTIONS**

Owner of Walmsley Building Solutions, Chris has developed a strong relationship with MBA Group Training. After completing his own carpentry trade certificate with MBA Group Training in June 2008, Chris established his own business focused on new homes, renovations and extensions. Today, he's committed to giving back to his industry by hosting young apprentices at the start of their careers. Apprentices value Chris' patience and dedication, with one young gun saying he has learnt 'heaps' from Chris and valued the placement opportunity.







# WINNER

## PROFESSIONAL OF THE YEAR

**PETER LEARY**

**COMPANY: PEAK CONSULTING**

A building consultant with 35 years of experience in construction, renovation and investigative work, Peter is a licensed builder who has spent nearly two decades focused on building repair. Peter and his firm, Peak Consulting, specialise in the diagnosis of defects in buildings, and provide expert assistance to owners, managers, law firms and building service providers around Canberra. With a reputation for reliability and honesty, Peter handles complex and challenging projects on a daily basis. With a deep understanding of local legislative and building code requirements, Peter is held in high regard by his clients and peers.







# WINNER

SUPPLIER OF THE YEAR

**COMPANY:** SOUTHERN INNOVATIONS

Nearing its 40th anniversary, Southern Plumbing Plus is a Canberra institution that supplies the building industry with everything from plumbing products to fully-imported German kitchens. With a solid reputation for customer service, a dedicated team ensures that Southern Plumbing delivers on every promise. Fiercely independent and local, Southern Plumbing and its retail arm, Southern Innovations, consistently present the Canberra community with the latest trends in bathroom and kitchens from leading manufacturers in Europe and Australia. Its recently refurbished showroom in Fyshwick is a must-see, and the company is determined to continue to match quality products with great customer service for many decades to come.







# WINNER

## CHIEF MINISTER'S AFFORDABLE HOUSING

**COMPANY:** CHASE BUILDING GROUP (CANBERRA) PTY LIMITED  
**PROJECT:** BENHAM APARTMENTS, CHISHOLM

Built with adaptability and flexibility in mind, the Benham Apartments in Chisholm showcase how affordable housing and liveability can go hand in hand. The building's eye-catching façade features a range of materials, including face brickwork, painted concrete, cemintel cladding and aluminium composite cladding. Careful material selection extends to the interior, with vitrified floor tiling throughout the living areas, and beautiful hardwood decking to the wintergardens providing a perfect place for residents to catch the sun. Each apartment has been designed to accommodate people at all stages of life and all abilities, ensuring the homes are resilient for many decades to come.

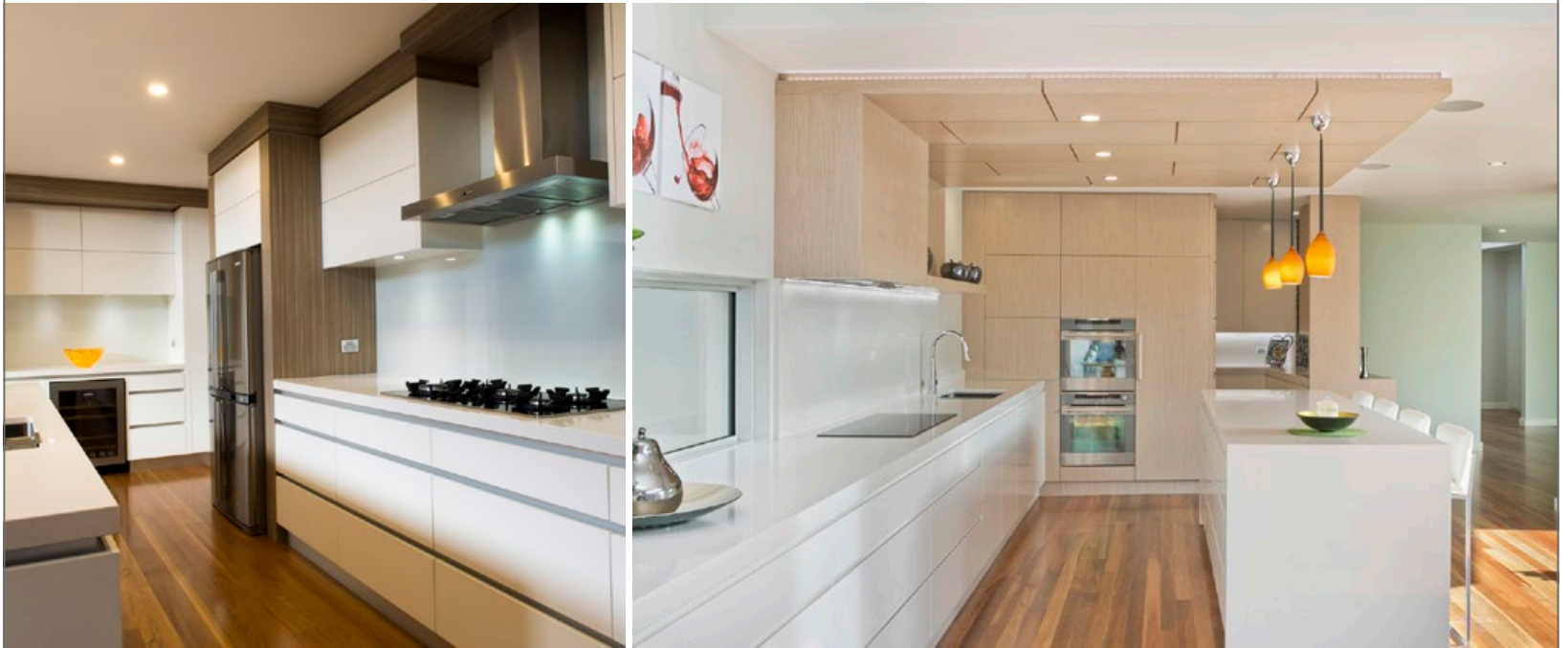






EXCELLENCE IN DESIGN AND SERVICE

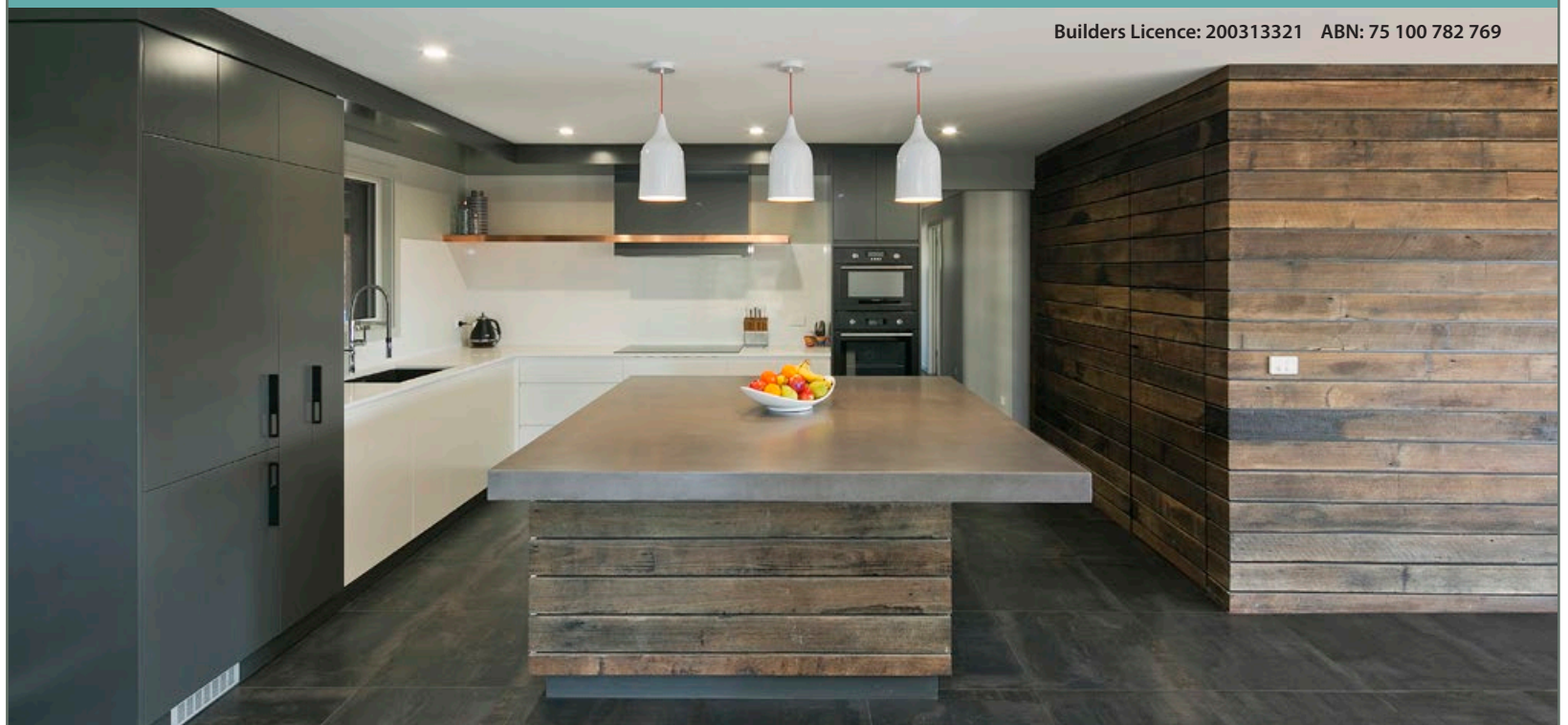
CANBERRA'S MOST AWARDED KITCHEN COMPANY FOR THE PAST 14 YEARS



CUSTOM JOINERY | KITCHENS | LAUNDRIES | VANITIES | COMPLETE TRADE MANAGEMENT

Unit 4, 28/30 Essington St Mitchell ACT 2911 T 6242 4633 F 6242 4677 M 0413 050 005 [www.simplicitykitchens.com.au](http://www.simplicitykitchens.com.au)

Builders Licence: 200313321 ABN: 75 100 782 769



**WAYNE GOODWIN**

**BUILDING SERVICES** PTY LTD

MULTI AWARD WINNING BUILDER SINCE 2000 | BUILDING QUALITY EXTENSIONS, RENOVATIONS AND NEW HOMES

Mobile: 0418 697 522

Email: [wayne@wgbs.com.au](mailto:wayne@wgbs.com.au)

[www.wgbs.com.au](http://www.wgbs.com.au)





# WINNER

APARTMENTS AND UNITS FOUR STOREYS AND ABOVE

**COMPANIES:** MILIN BUILDERS PTY LTD  
ARCHITECTS RING & ASSOCIATES

**PROJECT:** BROOKLYN, TURNER

Residents of this boutique-style apartment enjoy a spectacular roof top terrace garden, expansive views of the beautiful Black Mountain and the buzz of the city on their doorsteps. This unique eight-storey apartment features a four-storey base and four-storey tower and incorporates painted off-form concrete, precast panels and decorative metal screen elements. The 34 trendsetting apartments showcase modern industrial interior design, with high quality inclusions and contemporary open plan spaces delivering sophistication, style and a new way of living in the heart of Canberra.





**CHC Affordable Housing** improves people's social and economic participation, health and wellbeing by providing a diverse range of affordable housing options for rent and sale.



This year, CHC is proud to have two of its recently completed projects as finalists in the following categories:

- Residential Special Purpose Dwelling/Adaptable Dwelling category
- Residential Apartment and Units up to 3 storeys
- Residential Chief Minister's Affordable Housing

We would like to acknowledge the teams of builders and consultants who help us achieve quality results for our renters and purchasers alike.

In particular, the teams who worked with us on the above two projects:

- Kasperek Architects and Renaissance Homes
- Kasperek Architects and PBS Building

*Thank you all for helping us to continue to achieve our mission for our Canberra community.*

[www.chcancellablehousing.com.au](http://www.chcancellablehousing.com.au)





# WINNER

APARTMENTS AND UNITS 4 STOREYS  
AND ABOVE MIXED USE CONSTRUCTION

**COMPANY:** CHASE BUILDING GROUP (CANBERRA) PTY LTD  
**PROJECT:** ELEMENT APARTMENTS, KINGSTON

Offering a combination of studios, one and two-bedroom apartments along with unique two-storey skyhomes, Element takes in some of the best views of Canberra's sparkling Lake Burley Griffin. Oversized communal corridors, galleries and rooftop gardens enhance the sense of space, while carefully-selected materials, including raw concrete, timber and glass, seamlessly integrate with apartment interiors. Sophisticated technology, including a virtual building manager, energy monitoring of communal solar power, rainwater harvesting and intelligent lighting systems, reduce operation costs. The 140 residential apartments are complemented by 4,000 sqm of retail and commercial space, creating a place that is vibrant and dynamic both day and night.







# WINNER

APARTMENTS AND UNITS UP TO THREE STOREYS

**COMPANIES:** CHASE BUILDING GROUP (CANBERRA) PTY LTD  
AMALGAMATED PROPERTY GROUP

**PROJECT:** AMAYA APARTMENTS, GRIFFITH

An elegant development in one of Canberra's oldest and most exclusive suburbs, adjacent to the heritage listed Griffith Oval, Amaya epitomises modern luxury. Set out over seven individual buildings, each structure rises only two or three storeys, remaining respectful to Griffith's leafy heritage and harmonising with the existing landscape. The luxurious one, two and three bedroom apartments and penthouses provide an exceptional level of accessibility and flexibility, allowing for ease of living over time with lifts to each floor, wide corridors and doorways, large rooms, functional kitchens and bathrooms, and large fully enclosed garages.







# WINNER

DISPLAY HOME MORE THAN 225M<sup>2</sup>

**COMPANY:** BLD HOMES  
**SUBURB:** COOMBS

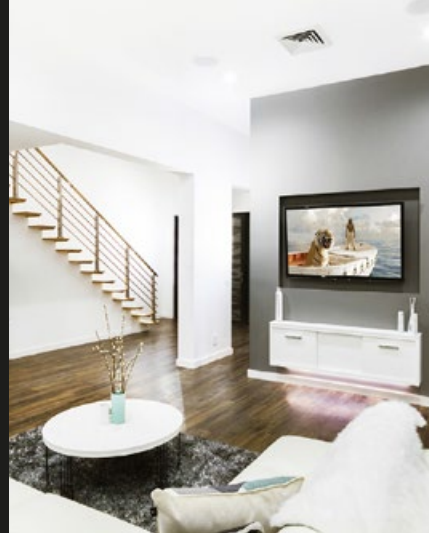
Designed for rest and play, The Hampton embodies the essence of modern living. An open plan kitchen, dining and living area forms the hub of the home, with the alfresco entertaining space directly adjacent. A generous and practical butler's pantry is nestled behind the kitchen, while a secluded theatre room offers an extra living space. The master bedroom is an isolated sanctuary featuring a spacious walk-in robe, palatial ensuite and a luxurious free-standing bath. A sleek lined timber staircase leads to the upper level, where another leisure room and additional bedrooms can be found. Functional and stylish, The Hampton reinvents family living.





MBA Multi Award Winning Builder

ACN 092 105 603 ACT Lic No: 200212712 - NSW Lic No: 127479C



**BLD**  
homes

Specialising in:  
Knock Down/Rebuild  
Custom Built Homes  
House & Land Packages

[bldhomes.com.au](http://bldhomes.com.au)

P 02 6280 4190

E [admin@bldhomes.com.au](mailto:admin@bldhomes.com.au)



**THANK YOU!**  
**AND GOOD LUCK**

THE TEAM AT CAPITAL CERTIFIERS WOULD LIKE TO THANK THE BUILDERS WE HAVE WORKED WITH OVER THE PAST 12 MONTHS AND WISH THEM LUCK IN THIS YEAR'S EXCELLENCE IN BUILDING AWARDS.

- EWER CONSTRUCTIONS
- FULL CIRCLE CONSTRUCTIONS
- SEINNA HOMES
- BROTHER PROJECTS
- IDEAL BUILDING SOLUTIONS
- FUTURE BUILDING
- ACUMEN CARPENTRY AND BUILDING SERVICES
- BANYAN CONSTRUCTIONS
- MMM INTERIORS
- WALMSLEY BUILDING SOLUTIONS
- BREMA GROUP
- PRECAST HOMES

**CAPITAL CERTIFIERS P/L**  
COLA LIC 2012818  
ACN 158 851 239





# WINNER

DISPLAY HOME LESS THAN 225M<sup>2</sup>

**COMPANY:** J&F HOMES PTY LTD  
**SUBURB:** MONCRIEFF

Open the doors of The Fina and discover a fresh take on family life. From the huge walk-in pantry in the kitchen to the generous bedrooms with specialised internal shelving and drawers in the wardrobes, The Fina blends practicality with luxury. The well-appointed master bedroom features a stylish walk-in robe and ensuite, while the custom-designed, contemporary kitchen overlooking spacious open living and dining areas maximises light, space and spectacular views of neighbouring parklands. Featuring modern fixtures and quality appliances, clever design ideas are found around every corner of this beautiful home.

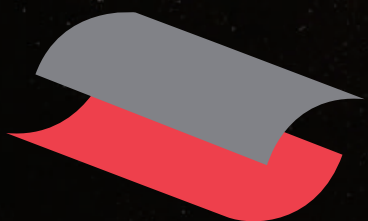






celebrating quality

Special Concessional Prices for MBA Members.  
Contact us today to learn more.



**SearsMorton**  
furniture made for memories

Cnr Isa & Newcastle Streets, Fyshwick  
Phone: 02 6280 5587

[searsmorton.com.au](http://searsmorton.com.au)



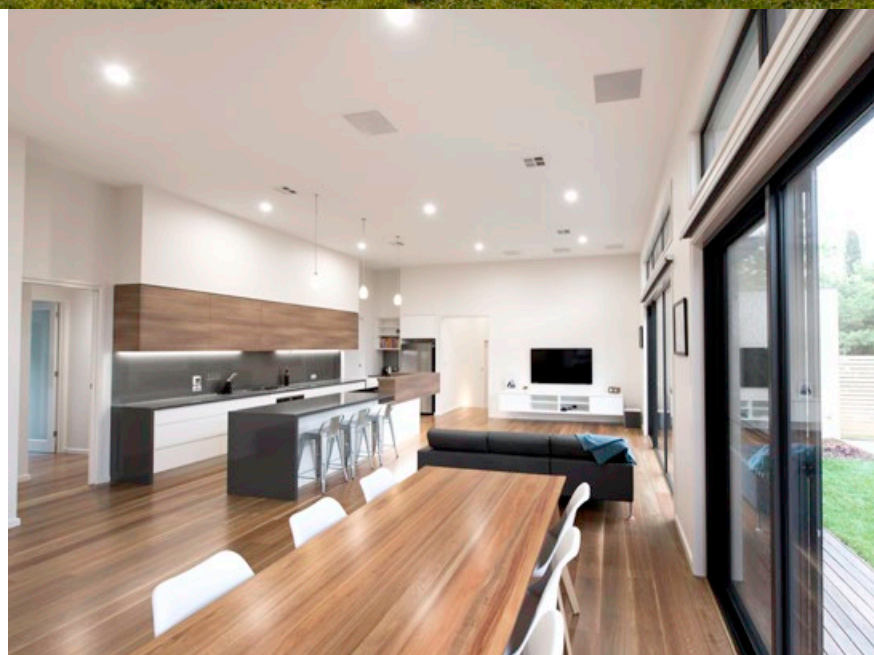


# WINNER

PROJECT HOME MORE THAN \$300,000

**COMPANY:** CLASSIC CONSTRUCTIONS  
**SUBURB:** GRIFFITH

Boasting a range of indoor and outdoor living spaces, flexible bedroom layouts, a double-height lounge room and high quality inclusions, the clever, compact design of this home demonstrates how intelligent design can make the most out of any modest block. The design maximises space, with a covered alfresco area and Merbau timber deck integrating outdoor living with the informal internal living space. A private north-facing balcony off the formal lounge room provides a sanctuary for home owners to enjoy the morning paper or an afternoon glass of wine. Designed to exceed energy efficiency requirements, the home's north orientation provides excellent solar access.







# WINNER

PROJECT HOME LESS THAN \$300,000

**COMPANY:** KOLAK LIVING  
**SUBURB:** COOMBS

A four-bedroom home offering a dynamic use of space and light, the Bedbrook Project features flexible, generous living spaces and secluded retreats. Parents can escape to the lavish master bedroom located within its own wing to unwind and relax, while the cleverly-designed open plan living and meals area creates a natural hub for busy family life. Careful consideration of materials adds to the overall stylishness of this home which demonstrates a high-end result can be achieved on a modest budget.







# WINNER

## MEDIUM DENSITY - TOWNHOUSES

**COMPANIES:** BELLEVUE BUILDING  
DNA ARCHITECTS

**PROJECT:** ELEVATE CANOPY LIVING

A stellar example of how urban infill can enhance a local streetscape and create new places for people, elevate transformed eight small units at the end of their lifecycle into 10 three bedroom townhouses. Carefully positioned on the block, the homes maximise northern orientation and activate the street. Clever design provides level access from garages to the essential living spaces, with secondary spaces located at the lower street level. Each townhouse is customisable, delivering a boutique feel to these vibrant villas.







Exceeding expectations through professionalism,  
integrity and honesty.



T: 0418 110 841

[www.walmsleybuilt.com.au](http://www.walmsleybuilt.com.au)

ABN: 33 407 358 731 ACT lic: 200923 NSW lic: 238425



**ALLIANCE Building Group** is a modern Building company based in the ACT with over 15 years experience in the building industry, specialising in New Homes, Custom Built Homes, Renovations/ Extensions, Commerical and Office fitouts.

Call 0409 776 750

[www.alliancebg.com.au](http://www.alliancebg.com.au) | [peter@alliancebg.com.au](mailto:peter@alliancebg.com.au)

PO BOX 793 MAWSON ACT 2607.

ABN 98147328729 | ACT BUILDER LICENCE 2011874 | NSW 237959C

**ACUMEN  
ARTISAN  
BUILDERS**

*Let's create a beautiful home, together.*



We are fully  
licensed, award  
winning builders  
and members of  
both the HIA and  
the MBA.

**Acumen Artisan Builders**

**M** 0408 473 316

**E** [shannon@acumenbuilding.com.au](mailto:shannon@acumenbuilding.com.au)

**W** [www.acumenbuilding.com.au](http://www.acumenbuilding.com.au)

ABN 67 145 819 512 | ACT LICENCE 2011618 | NSW LICENCE 231841C  
ACUMEN ARTISAN BUILDERS T/AS ACUMEN CARPENTRY AND BUILDING SERVICES PTY LTD





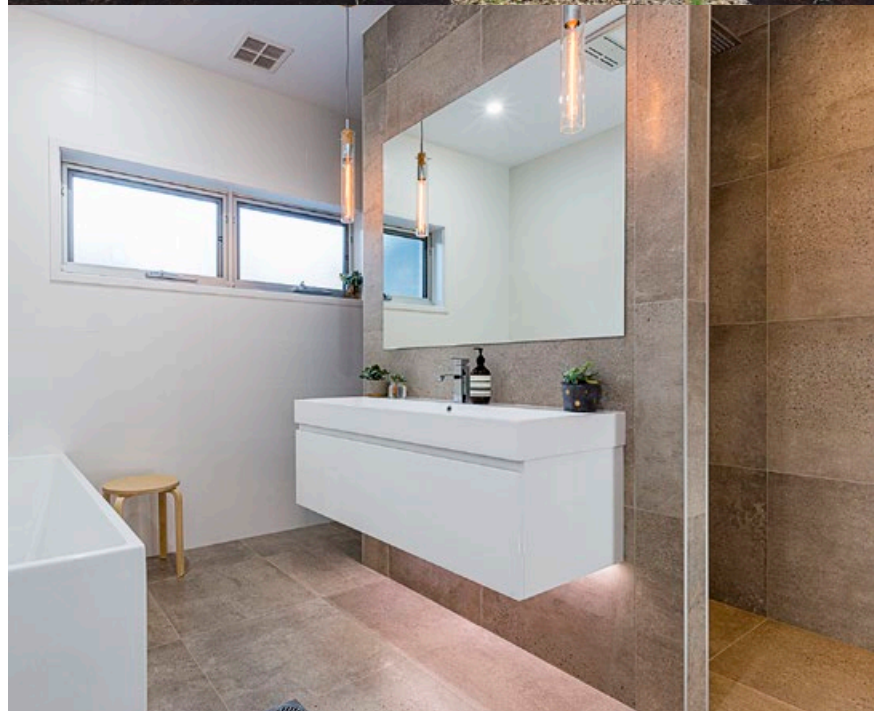


# WINNER

REMODELLING MORE THAN \$450,000

**COMPANY:** PROHAUS PTY LTD  
**SUBURB:** LYONS

The vision for this remodel was to create a minimalist yet functional family home. The original entry was relocated to present a grand entrance revealing clean lines that flow from the external façade through to the light and airy interior. Transformed into a family retreat with ample living and storage space, the Launceston Project boasts impressive indoor and outdoor entertaining spaces that can be combined or separated by full-height concealed sliding doors. By retaining its original floor area while extending its footprint, the home is now a minimalist masterpiece three times its original size.







# Quality ACT & NSW licensed Builder

## Specialising in:

- Custom Designs • Extensions & Remodelling
- New Homes • Knockdown/Rebuild
- Renovations • Outdoor Entertaining Areas

**Not sure where to start?**

**Give Warrick a call to discuss your future project on 0410 697 709**

ACT Licence No: 2008505 | NSW Licence No: 222482C | ACN: 130920900 | ABN: 99 849 437 307

# ReliaBuilt



**WINNER 2010**  
HIA ACT/Southern  
NSW Region  
Renovation/Addition Project  
\$350,000 to \$450,000



**WINNER 2014**  
HIA ACT/Southern  
NSW Region  
Renovation/Addition Project  
\$350,001 to \$500,000



**WINNER 2014**  
HIA ACT/Southern  
NSW Region  
Small Lot Housing



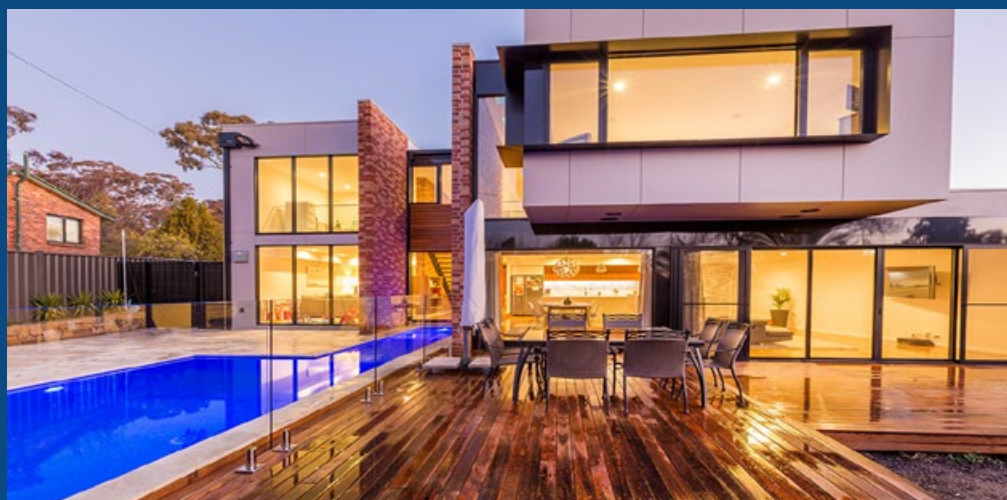
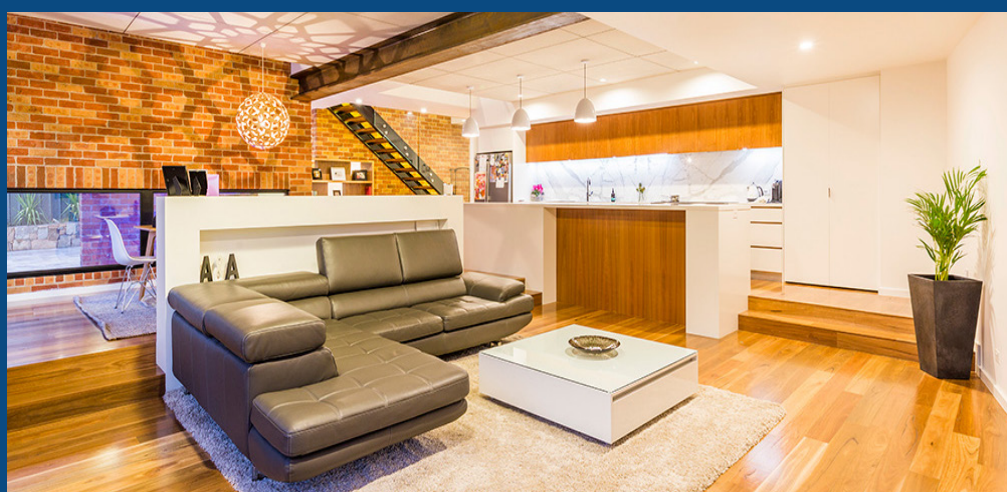
**MBA WINNER 2010**  
Home Remodelling  
more than \$300,000



**MBA MERIT 2011**  
Custom Built Homes  
\$300,000 to \$600,000



**MBA WINNER 2015**  
Home Remodelling  
more than \$450,000



## You Can **Reli** On Us!

P: 02 6230 9526 F: 02 6230 9528 M: 0410 697 709

E: [reliabuilt@y7mail.com](mailto:reliabuilt@y7mail.com)

155 Woodgrove Close  
Warraroo, NSW 2618







# WINNER

REMODELLING \$250,000 - \$450,000

**COMPANIES:** TORRES BUILDING GROUP  
TT ARCHITECTURE

**SUBURB:** DICKSON

A sustainable, light-filled home was the brief for this well-designed addition and alteration. Maximising site and orientation, the design now features a void space which has dramatically increased the home's solar access, while also serving to link the upper and lower levels. The interior and exterior are cleverly connected to the garden, making this home both lovely to look at and very liveable. The use of glass captures the glorious garden views and encourages sunlight to stream throughout the internal spaces. Attention to detail and beauty have delivered a home finished to the highest standard.







NEW HOMES

COMMERCIAL

KNOCK-DOWN REBUILDS

PROJECT MANAGEMENT



**MASTER BUILDERS**  
M E M B E R

[www.siennahomesact.com.au](http://www.siennahomesact.com.au)

Phone: 0404 864 352 | Email: [info@siennahomesact.com.au](mailto:info@siennahomesact.com.au) | Builder's Lic: ACT 20121611 - NSW 280667C

ACN: 161 222 457





# WINNER

REMODELLING \$150,000 - \$250,000

**COMPANIES:** BROTHER PROJECTS  
MMM INTERIORS

**SUBURB:** MELBA

What a transformation! Changing the access points and internal walls in this house eliminated loads of dead space, creating easy open plan living that is both functional and comfortable. A tired fireplace in the lounge room was re-faced to create a spectacular centerpiece. The kitchen, once boxy and inaccessible, now functions as a multipurpose space perfect for a busy family. A stunning oversize window now runs the full length of the kitchen and dining room, providing living art and a stunning backdrop to this spectacular family home.







Commercial  
Interiors  
Beautiful Aged Care

Award  
Winning  
Builder

Karl Meier  
0499 888 111  
[karl@meiergroup.com.au](mailto:karl@meiergroup.com.au)

ACT Licence no. 2013419 ABN: 54 623 800

MEIER





# WINNER

REMODELLING LESS THAN \$150,000

**COMPANY:** SCOTT HALLEY HOMES  
**SUBURB:** DEAKIN

Sometimes, minor changes can change a space and create a spectacular result. In this remodelling project, timber was used as a feature – from the cedar-lined double car port, gate and fence at the home's entryway to the solid spotted gum timber used throughout the living area and hallways. Freshening up the entrance by retiling the front porch, and building a pergola over the entry, have given this home's façade the wow-factor.







Specialising in solid surfaces including Corian: kitchen benchtops | splashbacks | countertops  
table tops, furniture | bowls, sinks, showers | internal & external wall cladding



[www.capitalsolidsurface.com.au](http://www.capitalsolidsurface.com.au)

75 Bayldon Rd, Queanbeyan NSW 2620 m 0427 036 944 e [info@capitalsolidsurface.com.au](mailto:info@capitalsolidsurface.com.au)



**Local Greensmart  
Building Specialists**  
Building sustainable energy  
efficient homes for now  
and into the future.



[www.idealbuildingsolutions.com.au](http://www.idealbuildingsolutions.com.au)

T: (02) 6236 9186 P: 0407 295 192  
E: [info@idealbuildingsolutions.com.au](mailto:info@idealbuildingsolutions.com.au)

ACN 109 414 780 Licensed Builders ACT 200427164 NSW 167005C

**Scott  
Halley  
Homes**  
"Our Quality, Your Style"



0418 606 144  
[halleyhomes@bigpond.com](mailto:halleyhomes@bigpond.com)

ABN 71 108 735 726  
ACT builder's licence number 200413738, NSW builder's licence number 184557C,  
MBA member number 11598





# WINNER

## SPECIAL PURPOSE DWELLING

**COMPANY:** PROJECT COORDINATION  
**PROJECT:** BANKSIA RESIDENTIAL CARE VILLAGE

This renovation and addition project has created a fresh, contemporary design for residents of this aged care facility. Thirty new high care rooms are light-filled spaces, while refurbishment works have reconfigured the facility's original design to create a new entrance, conference room, staff amenities, hair dressing salon and doctors' consulting rooms. New laundry, storage and staff facilities enhance the working environment. while the residential care suites have been cleverly sited near common areas to enhance accessibility. A large, north-facing café, dining room and lounge room provide views out to a landscaped pond, decks and stonewall courtyards.







**CAPITAL  
COMPLETE  
CONSTRUCTION**

#### **Capital Complete Constructions**

Founded in 2009 to offer specialised construction solutions in the residential and commercial construction sector, Capital Complete Constructions (CCC) is proud to continue providing the same uniquely collaborative, personalised approach today as we did when we first commenced operations. The long term relationships we have forged within the Canberra business community and government sector are testaments to the

excellence of our quality product, client focus and attention to detail. We have a solid history of repeat business due to the excellent service we continually provide our clients. The interior design aspect of our residential developments is managed by Stephanie Sterling Designs. Her management with all stakeholders ensures that each home is designed and constructed with an individual style to meet the needs of all our clients.

We offer services in project planning, development of user briefs, feasibility studies, management of design teams, program and cost management, project and construction management. These can be delivered in varying forms of contract such as lump sum, design & construct, construction management and managing contractor roles.

**[www.capitalcompleteconstructions.com.au](http://www.capitalcompleteconstructions.com.au)**

Ph 02 6242 4341 | Fax 02 6255 4676 | [info@capitalcompleteconstructions.com.au](mailto:info@capitalcompleteconstructions.com.au)

Licence No: 2015537 ABN: 80 603 737 739





# WINNER

## HERITAGE RESTORATION AND REFURBISHMENT

**COMPANY:** FUTURE BUILDING  
**PROJECT:** KINGSTON HERITAGE EXTENSION

Built in the 1920s, this heritage-listed home has been in the client's family since the early 1960s. Few alterations had been made over almost a century, and the client was determined to preserve the building's distinctive style while creating a contemporary family home. Maintaining the home's façade and front section, an extension at the back has expanded living areas while upholding the home's natural character. The best of 21st century technology – including custom fabricated steel doors, geothermal in-slab hydronic heating and burnished concrete floors – are juxtaposed with period feature ceilings and a stunning original Canberra stove. Together, the best of old and new bring warmth and charm to this exceptional address.







# WINNER

## URBAN RENEWAL

**COMPANY:** FUTURE BUILDING  
**SUBURB:** AINSLIE

Looking to add a second dwelling to a large block, Future Building set out to transform an existing heritage-listed garage into one half of a new home. Built in the 1930s, the structure's brick work contained no damp course, termite barriers or protection, and was dramatically out of kilter. The makeover is truly magnificent. The new two-bedroom home features a hand-fabricated steel loft bed and ladder, burnished concrete floors and soaring raked ceilings. A modest industrial style kitchen incorporates a unique peg board splashback, while glass mosaic tiles in the bathroom bring some bling. A cosy fireplace adds atmosphere and warmth to this glittering little gem.







# WINNER

KITCHEN PROJECT MORE THAN \$30,000

**COMPANIES:** CAPITAL VENEERING  
MMM INTERIORS

**SUBURB:** FORREST

A clever tweak to the wall between the dining room and kitchen of this renovation has improved functionality and reinvented this living space, creating room for an island and a large integrated fridge. By cutting a new doorway into the window sill, the kitchen now provides much-desired access to the home's back veranda, while new double-hung windows over the sink lend the space extra light. Slim-top glassed joinery ensures the island sits comfortably in the kitchen's heart, providing great storage solutions and a lovely display feature.







# Huge Range Of Quality Carpets

Come into one of our 2 great locations and you will receive expert advice and service from one of our experienced sales people.

Expert layers employed for carpet, vinyl, vinyl tiles and timber floors

**Obligation free measure & quote**

**timber • vinyl • carpet • laminate**

**Fyshwick**

Cnr Barrier & Isa Sts

**Ph:** 6280 5703

**Email:** office@hoodscarpet.com.au

**Phillip**

Hindmarsh Dr

**Ph:** 6285 1888

**www.carpetcourt.com.au**

HOODS  
**CARPET COURT**

FLOORING CENTRES



2016 Finalist - Kitchen project less than \$30,000



2016 Finalist - Display Home's more than 125m2



2016 Finalist - Best use of material - residential interior

**HAVE YOU SECURED LAND ?  
NOT SURE WHERE TO START ?**  
TALK TO CANBERRA'S CHOICE FOR  
CUSTOM DESIGNED NEW HOMES  
AND KNOCK-DOWN RE-BUILDS

**{TWENTY20}**  
**PROJECTS**  
*Building with a vision.*

**WWW.TWENTY20PROJECTS.COM.AU**  
**SALES@TWENTY20PROJECTS.COM.AU**

BUILDER'S LICENSE: ACT 20141150 | NSW 278869C - DISPLAY HOME, 51 MADGWICK STREET COOMBS - CONTACT US ON 0447 885 650







# WINNER

KITCHEN PROJECT LESS THAN \$30,000

**COMPANY:** TWENTY20 PROJECTS PTY LTD  
**SUBURB:** COOMBS

This open and inviting kitchen is all about practicality and ease. Overlooking the large dining table and outdoor area, the space is perfect for large-scale entertaining, while the breakfast bar is the perfect spot to sip a coffee or grab a quick bite. The custom-built Tasmanian Blackwood joinery around the dishwasher and the selection of copper add additional eye-catching appeal to this open space. Equipped with modern and easy-to-use appliances, this kitchen is made for aspiring chefs and busy families alike.







# WINNER

## BEST USE OF MATERIAL - EXTERIOR

**COMPANY:** TWENTY20 PROJECTS PTY LTD  
**SUBURB:** COOMBS

The natural earth tones found in this house are carried through to the exterior, with an impressive alfresco deck made from attractive Iron Bark Timber. Incorporating an old telegraph pole as a support for the alfresco area adds a talking point, while the careful selection of copper for the essential downpipe has transformed a typical eyesore into a beautiful backyard feature. Copper is cleverly used as an accent throughout the alfresco space, such as in the Vitrabond cladding, to spectacular effect.





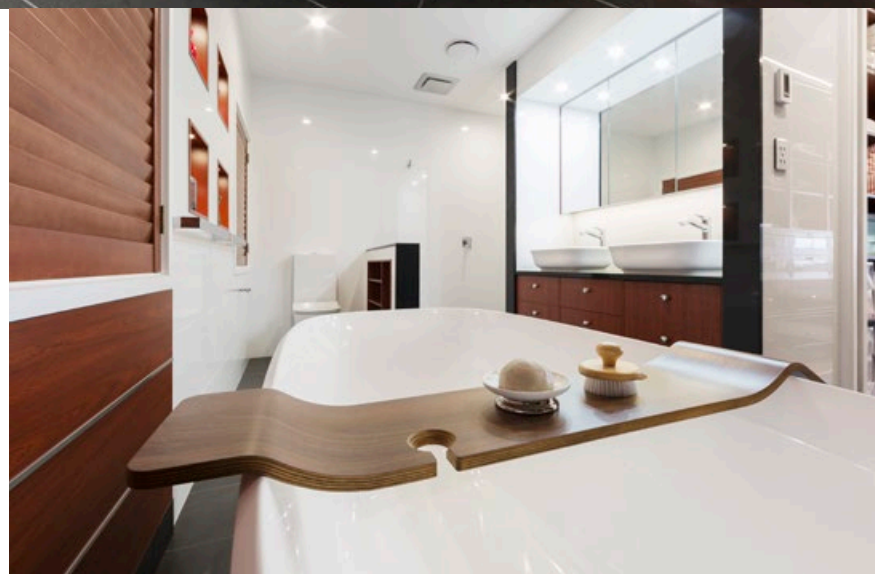


# WINNER

BATHROOM PROJECT MORE THAN \$30,000

**COMPANY:** P&K JOINERY  
**SUBURB:** FADDEN

Smart design, creative workmanship and harmonising finishes come together in this gorgeous ensuite. Carefully-considered storage and lighting make for a functional bathroom, while a custom-made single vanity with two basins creates better flow through the space. A custom-made shaving cabinet on the wall above the vanity provides additional storage and a unique element. A lavish shower and free standing bath were positioned to promote a sense of space. The finishes, comprising of Caesarstone, Jarrah and melamine, convey warmth and luxury, and were chosen to complement the existing family home and to stand the test of time.





Modern · Beautiful · Sophisticated

**MBSHOUSING**

The Monti



**Modern, beautiful and sophisticated—that's the MBS Housing promise.**

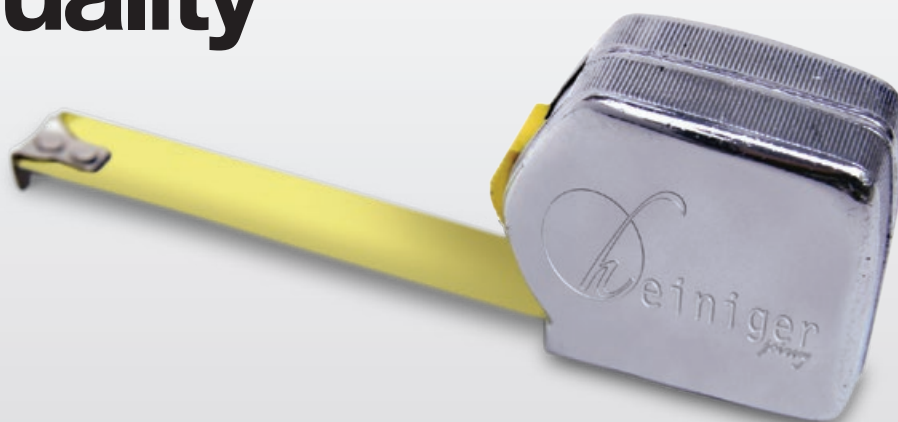
We offer new homebuyers contemporary and aspirational homes at affordable prices. In order to meet the requirements and expectations of the most discerning homebuyer our architecturally-designed plans can be customised to suit all lifestyles.

For more information visit our website or call us today.

[www.mbshousing.com.au](http://www.mbshousing.com.au)  
[info@mbshousing.com.au](mailto:info@mbshousing.com.au)  
**0423 727 684 or 02 6162 0232**  
f MBSHousing

 PART OF THE  
MONARCH BUILDING SOLUTIONS  
GROUP  
ACT Licence no: 200697 | ACN: 115 347 969

# Immeasurable quality



commercial residential detailed joinery

m 0409 907 196 e [info@heinigerjoinery.com.au](mailto:info@heinigerjoinery.com.au)  
Unit 1 67-71 Bayldon Road Queanbeyan NSW 2620 [www.heinigerjoinery.com.au](http://www.heinigerjoinery.com.au)





# WINNER

**BATHROOM PROJECT LESS THAN \$30,000  
& BEST USE OF MATERIAL - INTERIOR**

**COMPANY:** MCDONALD & CO  
**SUBURB:** CRACE

Luxury and practicality were the two ideas behind this lavish master ensuite. The spacious bathroom features twin basins sitting on a recycled timber vanity top, while a generous shower includes two wall-mounted rails and one ceiling-mounted rainwater head. The ensuite's centrepiece is its free standing bath with floor mounted mixer, which looks out to a private courtyard lined with recycled red bricks. Storage is plentiful with extra-deep built-in shaving cabinets and a recessed tiled shelf below. The herringbone tile is 'on trend' and complements the sophisticated style found throughout the house.







From the moment visitors step through the door, they are struck by the use of polished concrete and recycled timber to create an edgy, yet homely feel throughout this home. The black, white and grey polished concrete features hydronic in-slab heating to keep the feet warm in winter.

RECYCLED TIMBER, FROM THE SCREEN IN THE ENTRYWAY TO TIMBER BENCHTOPS IN THE KITCHEN AND VANITIES IN ALL THREE BATHROOMS AND POWDER ROOM, WAS SOURCED LOCALLY AND PROVIDES A MODERN, STYLISH LOOK.

Quality workmanship was essential and this stunning result doesn't disappoint.





# WINNER

## LANDSCAPE DESIGN AND CONSTRUCTION

**COMPANY:** THE LIVING ROOM LANDSCAPES  
**SUBURB:** FORREST

A new gentle outdoor aesthetic complement the architecture and character of this renovated classic. Integrated indoor and outdoor living spaces were designed with comfort and practicality in mind, and cater for large family gatherings and intimate affairs. Extra car parking and a large play area for children and pets adds to the home's liveability, while the outdoor entertaining and pool area functions well all year round. Low-maintenance plantings reflect the quintessential Canberra gardens of the era; links to local history continue with recycled Tharwa bridge timbers and Mt Majura Winery stone. The west-facing area required creative solutions to deal with the extremes of Canberra's climate, but the project team has delivered in spades.






# abode

Constructions and Developments

[abodeconstructions.com.au](http://abodeconstructions.com.au)

[info@abodeconstructions.com.au](mailto:info@abodeconstructions.com.au)

 [facebook.com/AbodeConstructions](https://facebook.com/AbodeConstructions)

ACT License no. 2011823 - NSW License no. 239714C - ACN: 150 849 380



**CHAPMAN**  
BUILT

Providing excellence in residential extensions, renovations and custom built new homes in Canberra and surrounding regions.



0408 681 941

[chapmanbuilt.com.au](http://chapmanbuilt.com.au)

CRMB PTY LTD trading as Chapman Built

ABN: 18145 503 386

ACT LIC: 2011 1321





# WINNER

## WORK HEALTH AND SAFETY - LARGE SCALE RESIDENTIAL

**COMPANY:** GEOCON  
**PROJECT:** WAYFARER, BELCONNEN

Canberra's largest residential tower, Wayfarer, presents many challenges – the tight site in close proximity to neighbourhood activities and heavy local traffic among them. Geocon has designed a bespoke safety management plan that complies with the stringent AS4801 standard, and that engages all contractors in a collegiate approach to safety. This collaborative attitude, while not unique, has been highly successful. Employees are encouraged to rethink and implement practical safety processes and practices as the building is constructed. Just two minor incidents on site – which were both analysed for opportunities to improve workplace safety – underscore the success of Geocon's approach.







# WINNER

WORK HEALTH AND SAFETY -  
SMALL SCALE RESIDENTIAL

**COMPANY:** BREMA GROUP

**PROJECT:** LOOSE FILL ASBESTOS  
INSULATION ERADICATION PROGRAM

While undertaking the demolition of houses under the Loose Fill Asbestos Eradication Program, Brema Group, together with its partners, has developed a complex safety management plan that considers contractor and neighbourhood safety, and waste management compliance. Working under tight safety parameters – which includes adherence to the Asbestos Taskforce's stringent requirements, as well as meeting the demands of ACT WorkSafe and onsite asbestos monitoring – Brema Group has designed and delivered a system that ensures all compliance safety measures are met and exceeded.







# WINNER

## SUSTAINABLE CONSTRUCTION

**COMPANY:** IDEAL BUILDING SOLUTIONS  
**SUBURB:** GUNDAROO

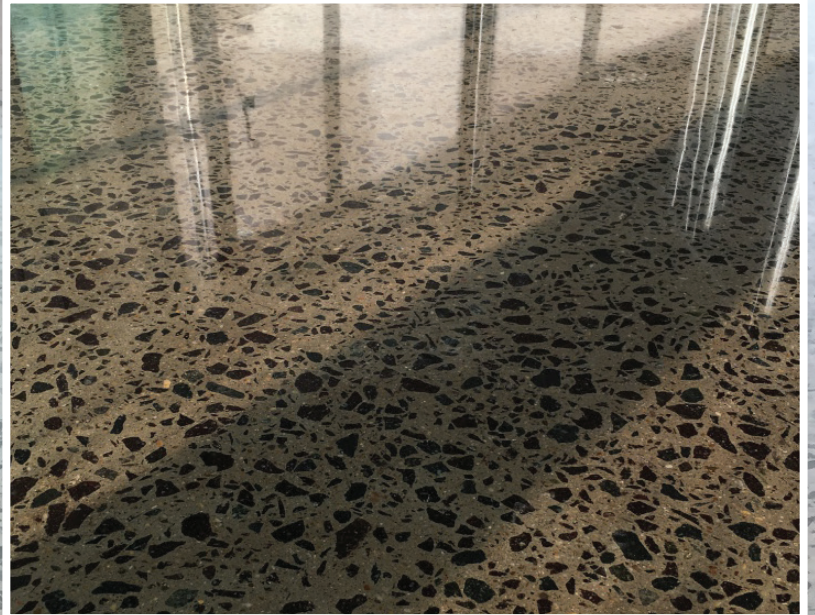
Nestled into the bush, this modest home treads lightly on the surrounding landscape. Twenty years in the planning, this custom-built sustainable home is sensitive to its site, and embodies solar passive design principles. Inspired by an old farmhouse, the grey ironbark cladding was chosen for its bushfire resilience and longevity. Double-glazed windows provide 180 degree views to the north, and the winter sun penetrates the house to warm a polished concrete floor. Energy efficient appliances, custom designed louvre awnings to shield the summer heat, and two solar arrays ensure this home is not only low in environmental impact, but a fabulous place to live.







# Polished Concrete Specialists



## Services

At **Ruff Rock** we specialise in polished concrete. Our clients are guaranteed a team of highly skilled polishers who are dedicated to delivering a product of the highest quality.

[www.ruffrock.com](http://www.ruffrock.com)

## Contacts

<b>Phone</b>	Gavin Reid 0409 674 496
<b>Email</b>	<a href="mailto:office@ruffrock.com">office@ruffrock.com</a>
<b>Website</b>	<a href="http://www.ruffrock.com">www.ruffrock.com</a>
<b>Facebook</b>	<a href="https://facebook.com/ruffrockpolishedconcrete">facebook.com/ruffrockpolishedconcrete</a>



# TRAINING AWARDS

AWARDED TO THE OUTSTANDING APPRENTICE, ASBA STUDENT & UC STUDENT OF THE YEAR



## WINNER

OUTSTANDING APPRENTICE OF THE YEAR

**PAUL BARNES**

Commencing his apprenticeship in January 2013, Paul gained a reputation as a quiet achiever. He impressed his trainer with his dedication and commitment. "Paul consistently applied himself to his learning, delivering a high standard of work throughout his training contract," his trainer says. A team player, Paul gained his qualification in March 2016 and is now employed by MBA Group Training and hosted by Peak Building.

## WINNER

OUTSTANDING ASBA STUDENT OF THE YEAR

**MITCHELL CASSIMATIS**

Commencing and completing his Certificate II in Construction in 2014 as a school-based apprentice, Mitchell then accepted a full-time carpentry apprenticeship with MBA Group Training. Recognised for his commitment to excellence, Mitchell was a WorldSkills Australia medallist in 2015.



## WINNER

UNIVERSITY OF CANBERRA  
STUDENT OF THE YEAR

**ZIQI CHEN**

With a strong commitment to professionalism and quality, Ziqi was an outstanding student who made a valuable contribution to her classes. Winning the Dean's Excellence Award for each of the three years she was enrolled at the University of Canberra, Ziqi studied at an accelerated pace and achieved well above a Distinction average. Always keen to learn and participate in class discussions, Ziqi completed a cadetship and is now employed with Rider Levett Bucknall.







Supplying products for many MBA winning projects  
Architects requests welcome | Quality Service



Bink Cement Products believe in sustainable business practices which is why our raw materials are sourced locally and we manufacture locally. Bink Cement has the ability to supply all scale of projects from large commercial to smaller residential. We supply the building market, sand and soil landscape yards as well as South-East NSW with our superior products.

**Specialists in: Small and large format pavers | Masonry blocks**  
**Step treads | Concrete Curbs | Fence posts | Split face dry stack blocks**  
**Commercial and residential projects | Small and large jobs**



# TALK TO

# MBA GROUP TRAINING

# FOR ALL YOUR

# CONSTRUCTION

# INDUSTRY TRAINING

# REQUIREMENTS

**MBA Group Training** provides learning opportunities through industry training and education services. Safe work practices within the industry are a priority for MBA Group Training and expert advice is available in a range of areas including occupational health and safety requirements, industry codes of practice, education and training.

MBA Group Training has created significant employment opportunities throughout the industry as well as provided many employer benefits. Building Industry Training Courses are conducted throughout Canberra and the region.

## **INDUSTRY TRAINING COURSES**

MBA Group Training offers a wide range of industry training options. All training is provided by qualified trainers with industry experience. Many of our training programs are approved by the ACT Building and Construction Industry Training Fund Authority which reimburses up to 70% of course costs for eligible course participants, upon successful completion of the course.

**For more information about training opportunities contact MBA Group Training:**

**T** 02 6175 5900

**F** 02 6280 9118

**E** [training@mba.org.au](mailto:training@mba.org.au)

**www.mba.org.au/training**



**ASBESTOS AWARENESS**

**WORKING AT HEIGHTS**

**ELEVATED WORK PLATFORM**

**CONFINED SPACES**

**GENERAL CONSTRUCTION INDUCTION**

**OPERATE A FORKLIFT TRUCK**

**EXPLOSIVE POWER TOOLS**

**ERECT AND DISMANTLE SCAFFOLDING**

**BULLYING & HARASSMENT**

**HEALTH & SAFETY REPRESENTATIVES**

**MANUAL HANDLING**

**OPERATE A MATERIALS HOIST**

**LICENCE TO PERFORM DOGGING**

**CERTIFICATE IV IN BUILDING & CONSTRUCTION**



**MASTER BUILDERS  
GROUP TRAINING**

MBA Group Training Limited  
RTO NO. 88163

## **ONLINE REGISTRATION**

for industry based courses  
is now available with  
MBA Group Training.

**[mba.org.au](http://mba.org.au)**





# JUDGES' COMMENDATIONS



**DISPLAY HOMES  
LESS THAN 225M<sup>2</sup>**

KOLAK LIVING

**SUBURB:** COOMBS

**DISPLAY HOMES  
LESS THAN 225M<sup>2</sup>**

VOGUE CONSTRUCTIONS PTY LTD

**SUBURB:** COOMBS



**DISPLAY HOMES  
MORE THAN 225M<sup>2</sup>**

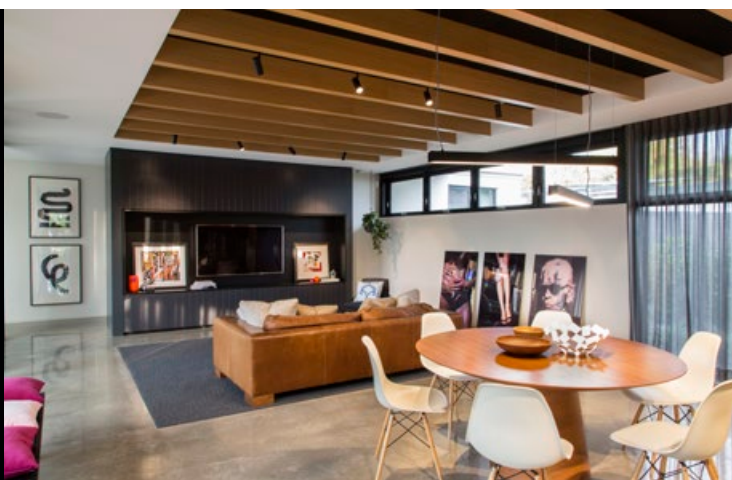
EMMADALE GROUP;  
THE DEPT. OF DESIGN;  
ARCHITECTS RING & ASSOCIATES

**SUBURB:** YARRALUMLA

**CUSTOM BUILT HOMES  
250M<sup>2</sup> - 350M<sup>2</sup>**

MEIER BUILDING SERVICES

**SUBURB:** GRIFFITH





# JUDGES' COMMENDATIONS



**CUSTOM BUILT HOMES**  
250M<sup>2</sup> - 350M<sup>2</sup>

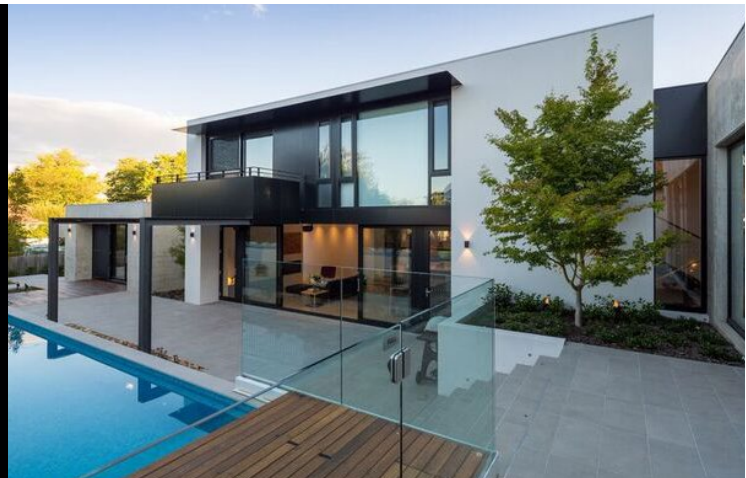
EMMADALE GROUP;  
THE DEPT. OF DESIGN;  
ARCHITECTS RING & ASSOCIATES

**SUBURB:** YARRALUMLA

**CUSTOM BUILT HOMES**  
250M<sup>2</sup> - 350M<sup>2</sup>

FULL CIRCLE CONSTRUCTIONS

**SUBURB:** YARRALUMLA



**CUSTOM BUILT HOMES**  
150M<sup>2</sup> - 250M<sup>2</sup>

VISCON HOMES;  
DNA ARCHITECTS

**SUBURB:** CASEY

**CUSTOM BUILT HOMES**  
LESS THAN 150M<sup>2</sup>

VOGUE CONSTRUCTIONS PTY LTD

**SUBURB:** GOOGONG





# JUDGES' COMMENDATIONS



**PROJECT HOMES**  
**MORE THAN \$300,000**

RENAISSANCE HOMES

**SUBURB:** CAMPBELL

**PROJECT HOMES**  
**LESS THAN \$300,000**

RENAISSANCE HOMES

**SUBURB:** MONCRIEFF



**MEDIUM DENSITY**  
**TOWNHOUSES & VILLAS**

ART HOMES;  
DNA ARCHITECTS

**PROJECT:** AZURA VILLAS

**REMODELLING**  
**MORE THAN \$450,000**

CHAPMAN BUILT

**SUBURB:** REID





# JUDGES' COMMENDATIONS



## SUSTAINABLE CONSTRUCTION

360 BUILDING SOLUTIONS;  
THE MILL ARCHITECTURE & DESIGN

SUBURB: COOMBS

## BEST USE OF MATERIAL INTERIOR

SIMPLY CERAMICS

SUBURB: GOOGONG



## BATHROOM PROJECT LESS THAN \$30,000

MEIER BUILDING SERVICES

SUBURB: GRIFFITH

## KITCHEN PROJECT MORE THAN \$30,000

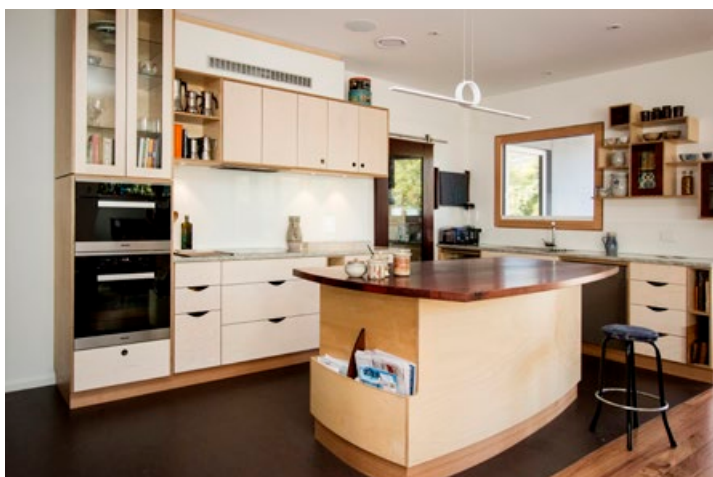
SIMPLICITY KITCHENS;  
WAYNE GOODWIN  
BUILDING SERVICES;  
THE DEPT. OF DESIGN

SUBURB: BYWONG





# JUDGES' COMMENDATIONS



**KITCHEN PROJECT  
MORE THAN \$30,000**

SELECT CUSTOM JOINERY

**SUBURB:** O'CONNOR

**KITCHEN PROJECT  
LESS THAN \$30,000**

MCDONALD & CO

**SUBURB:** CRACE



**KITCHEN PROJECT  
LESS THAN \$30,000**

PIONEER KITCHENS;  
ARCHERTEC INTERIORS

**SUBURB:** GOOGONG





# RAM LIVING



SINGLE-LEVEL  
DISPLAY HOME

*RAM LIVING*

**MONCRIEFF**

TOWN HOUSES  
MULTI-UNIT

*RAM CONSTRUCTIONS*

**CHIFLEY**



COMMERCIAL  
LANDSCAPE/CIVIL

*RAM CONSTRUCTIONS*

**CAMPBELL**



T (02) 6242 5200  
info@ramconstructions.com.au  
Unit 10, 96-98 Vicars Street  
Mitchell, ACT 2911

Builder Lic: 2005218 (A-Class) ACN: 008 519 784



[www.ramconstructions.com.au](http://www.ramconstructions.com.au)







# THE ESSENTIAL NEW HOME GUIDE





**Emmadale Projects**  
collaborates with a range of  
award-winning architects and  
interior designers to create  
beautiful, bespoke homes.



# THE ESSENTIAL NEW HOME GUIDE

AUSTRALIANS HAVE ALWAYS BEEN OBSESSED WITH HOMEOWNERSHIP. WHILE THE GREAT AUSTRALIAN DREAM OF THE QUARTER ACRE BLOCK WITH HILLS HOIST ON THE LAWN AND VICTA IN THE SHED MAY BE EVOLVING AS OUR CITIES CHANGE SHAPE, THE SECURITY AND SATISFACTION OF OWNING A HOME REMAINS MUCH THE SAME.

But if you're like most Australians, your home will also be the biggest asset you'll own over your lifetime. This makes choosing a new home – or renovating your existing home – a serious financial decision.

You may watch all the renovation shows and can tell Scandinavian style from industrial chic, but making smart choices that ensure your biggest asset delivers long-term value can be daunting.

So what are the top tips to consider when looking to buy a new home? We asked the experts...

## BEST DESIGN FOR YOUR BLOCK

It may sound simple, but the size of your block, whether it's flat or sloping, on the high or low side of the street, overshadowed or dominated by trees, and even the soil

**TRYING TO MAKE A DESIGN WORK THAT ISN'T RIGHT FOR THE SITE CAN ADD TENS OF THOUSANDS TO THE COST OF THE PROJECT, LEAVING YOU WITH LESS TO SPEND ON INCLUSIONS, AND EVEN EATING INTO THE SIZE OF YOUR LIVING SPACES**

conditions, can have an impact on the design of your home.

Considering these factors from the outset can save you from blowing the budget on hidden expenses that you'll never recoup.

"Don't think about your design in isolation, but consider how your home will work with your block," is the advice from GR8 Constructions.

"A good builder will make suggestions to help you make the most of your block," explains one half of the winning GR8 Constructions team, Grant Wilson.

"A GOOD BUILDER WILL MAKE SUGGESTIONS TO HELP YOU MAKE THE MOST OF YOUR BLOCK," EXPLAINS ONE HALF OF THE WINNING GR8 CONSTRUCTIONS TEAM, GRANT WILSON.

**GR8 Constructions**  
Visit their display home in Coombs



### RAM Living

Designed to make the most of Canberra's four glorious seasons, RAM Living homes reflect classic design and modernist style.





Experience. Range. Service

"...amazing showrooms,  
a must see!"

## RIVOLAND

THE REGION'S LARGEST TILE STOCKIST

### RIVOLAND SHOWROOMS

100 Crawford Street, Queanbeyan  
55-57 Darling Street, Mitchell

Tel: 6297 4510

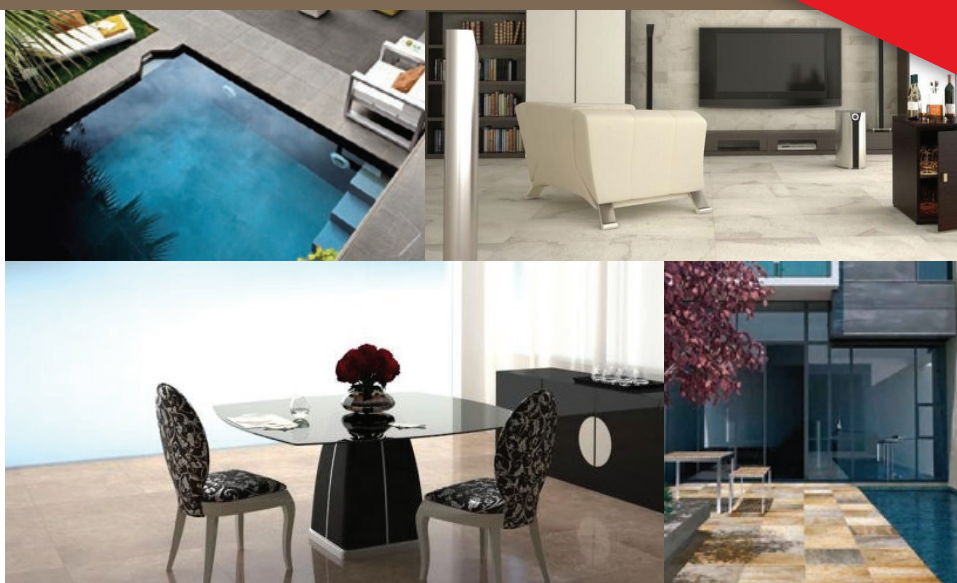
Tel: 6241 1557

### TRADE CENTRES

24-26 Aurora Street, Queanbeyan  
55-57 Darling Street, Mitchell

Tel: 6297 9930

Tel: 6255 0535



Rivoland is the ACT and region's largest tile stockist.

[www.rivoland.com.au](http://www.rivoland.com.au)

### Builders, Architects, Interior Designers and Renovators -

Visit our showroom - Rivoland's experience, range and expertise will make it easy for you to choose the perfect tile.



## Emmadale PROJECTS PTY LTD

Achieve your dream while you rest  
easy knowing your home will be built  
to last and stand the test of time.

Visit our display  
home in Yarralumla  
- by appointment only

### FEATURES INCLUDE

- Architecturally designed
- Single level floor plan
- Double glazed windows
- High ceilings throughout
- Solid timber floors
- Miele appliances

4 Woolls Street, Yarralumla

### Emmadale Projects

1-16 Bougainville St, Manuka 2600

[info@emmadalegroup.com.au](mailto:info@emmadalegroup.com.au)

T 02 6295 3133

Builders Licence No. ACT-20101136, NSW-268271C

ABN: 36145581675

Exceptional quality, exceptional living.







**WHEN YOU WANDER INTO AN OLD HOUSE, THE VALUE IS FOUND NOT IN THE DILAPIDATED KITCHEN OR DATED BATHROOM. IT'S FOUND IN THE SENSE OF SPACE OR LIGHT. DOES A HOME HAVE 'GOOD BONES'? THAT'S WHAT YOU HAVE TO ASK IF YOU'RE LOOKING AT A FLOORPLAN OR WALKING THROUGH A DISPLAY HOME.**

"Trying to make a design work that isn't right for the site can add tens of thousands to the cost of the project, leaving you with less to spend on inclusions, and even eating into the size of your living spaces."

Emmadale Projects' owner, Rod Jenkins, agrees.

"Use the block – the way it sits on the street, how it catches the light – to your advantage. This isn't just smarter in terms of design, it can also save a small fortune in excavation costs."

### GOOD DESIGN DELIVERS DIVIDENDS

Rod says many people who visit display homes are dazzled by the furniture and landscaping, and can forget about the functionality of the home.

"Don't get seduced by the bells and whistles when you're looking at designs. Instead, think about the way your family lives. The design of your dream home must reflect your family first," Rod explains.

RAM Living's managing director Anthony O'Brien warns people to look beyond a home's floorplan to how the spaces work together.

"Smaller floorplans can often be more efficient if they are well designed. Focus on the way the rooms work with each other – where the windows sit, the height of the ceilings, and how you can bring the outdoors in to create a sense of space," Anthony says.

While stone benchtops and glass splashbacks might be seen as adding value to a home, our experts all agree that the real value is found in the design.

"Don't get trapped into thinking that the cost of your home is the dollars divided by square metres, or that the inclusions list is central. Everything is disposable but good design," Anthony adds.

"When you wander into an old house, the value is found not in the dilapidated kitchen or dated bathroom. It's found in the sense of space or light. Does

a home have 'good bones'? That's what you have to ask if you're looking at a floorplan or walking through a display home."

### FIRST IMPRESSIONS COUNT

The old saying "don't judge a book by its cover" isn't applicable to property. First impressions count, and street appeal can increase the value of your home significantly.

"Where once Canberrans were conservative when it came to the look of a house from the street, people now understand street appeal means more than a well-watered lawn," says Project Manager of J&F Homes, Tony Palombi.

"Increasingly, our clients want to combine brickwork with cladding. People are prepared to be more adventurous, and the huge range of new products on the market makes it easy to find a unique look."





FURNITURE CAN ACT  
AS A CLEVER ROOM  
DIVIDER TO MAKE THE  
MOST OF AN OPEN  
PLAN DESIGN AND  
CREATE SEPARATE  
LIVING ZONES  
WITHIN THE ONE  
SPACE

## DREAM HOMES ON DISPLAY

Named after Gladys Moncrieff, Australia's 'Queen of Song' in the 1920s, Canberra's newest suburb – and the fabulous display village at its heart – will make any home buyer's heart sing.

**Moncrieff Display Village** showcases the latest living ideas for sustainable, accessible and affordable homes.

A collaboration between Master Builders ACT and the Land Development Agency, the display village features 12 single and double storey homes packed with state-of-the-art design, smart technology and clever ideas to suit all budgets and tastes.

"There's no better way to experience the best in modern housing design and construction than by wandering through this display village," says MBA's executive director in the ACT, Kirk Coningham.

### J&F Homes

Stylish and sleek design,  
quality brands and finishes



T (02) 6242 5200  
sales@ramliving.com.au  
Unit 10, 96-98 Vicars Street  
Mitchell, ACT 2911



Builder Lic: 2005218 (A-Class) ACN: 008 519 784

[www.ramliving.com.au](http://www.ramliving.com.au)



DISPLAY HOMES FEATURE

Lysaght understands how to make homes look good, and the company’s manager in Canberra, Justin Tierney, says cladding does more than protect the outside of a home against the vagaries of the weather. It can also create bespoke and beautiful façades.

“A growing trend is combining cladding materials to create a unique, contemporary look,” Justin explains.

“Using more than one cladding material can break up large expanses of brickwork and define different areas of a home. Another trend is to use a single cladding material in two or more contrasting colours for eye-catching street appeal.”

OPEN PLAN OR PRIVACY?

Most modern homes make a feature of open plan living, connecting indoor and outdoor spaces and encouraging family interaction.

“Open floor plans with less wall space means more access to natural light, which can give the illusion of space, especially when combined with high ceilings,” explains Tony Palombi.

While small, pokey rooms and rabbits’ warrens of corridors may be a thing of the past, be careful not to swing to the other extreme.

“A home that is too open can become uncomfortable to live in – particularly when you have a large family living together in the one space,” Tony warns.

Emmadale Projects’ Rod Jenkins says that while “big family areas that open onto central courtyards or outdoor entertaining spaces are big favourites”, the trick is to factor in a secluded ‘retreat’ away from the hustle and bustle of family life.



WHILE SMALL, POKEY ROOMS AND RABBITS’ WARRENS OF CORRIDORS MAY BE A THING OF THE PAST, BE CAREFUL NOT TO SWING TO THE OTHER EXTREME.

“Most parents want their own private space away from the kids, and floorplans are adjusting to accommodate this,” Rod says.

Careful consideration of furniture can also make or break an open plan space.

“Furniture can act as a clever room divider to make the most of an open plan design and create separate living zones within the one space,” says Dan Power, who owns and operates Canberra institution, Uneke Furniture.

“Think open book cases or custom-designed credenzas – but remember they need to look good from all angles,” Dan says.

**RIVOLAND Tiles**  
Rivoland’s experience, range and expertise will make it easy for you to choose the perfect tile.





**WITH COSTS  
COMING DOWN,  
PORTER SAYS  
DOUBLE-  
GLAZING IS  
SIMPLY A “NO  
BRAINER”.**



#### **Solace Creations**

Solar access policies in Canberra mean every home must be designed to get at least three hours of sunlight each day.

## **WINNING WINDOWS**



In a climate of extremes like Canberra, investing in insulation will provide a generous payback – both in energy savings and in resale value. In fact, one study undertaken by the ACT Government in 2008 found that a higher energy efficiency rating translates into a two per cent increase in a home's value.

Karen Porter, the woman behind Solace Creations, says home buyers need to consider the long-term payback, as well as the upfront cost. This is especially the case when it comes to double-glazing.

**“Double-glazing during a build will deliver savings in the first year,” Karen says.**

“While it will cost about \$10,000 more than single-glazed windows, that's just \$450 a year in mortgage repayments over the life of an average loan. And you'll save as much as \$1,600 a year in energy bills – so the numbers well and truly stack up,” Karen explains.

## **GR8 CONSTRUCTIONS**

Grant Wilson and Robert Petrovic were both highly-experienced and respected tradesmen before joining forces in 2003 to create GR8 Constructions.

Passionate about homes, Grant, Rob and their team pride themselves on delivering quality results, on time, on budget and above and beyond their clients' expectations.

“We get our greatest thrill from handing over the keys to a new home, knowing we've played an essential role in helping someone create a dream home,” says Grant.

“And being Canberra locals, we understand how to build beautiful homes that suit the Canberra climate and are great to live in all year round,” adds Rob.

GR8 Constructions' provide experienced inhouse sales and drafting services with Peter Hawke as part of the team.

Drop by to see GR8 Constructions' award-winning display home in Coombs, or chat to the team about how to make your dream home a reality.

[www.gr8constructions.com.au](http://www.gr8constructions.com.au)

## **EMMADALE PROJECTS**

A boutique, family business that specialises in high-end custom-built homes, extensive renovations and extensions, the team behind Emmadale Projects understand that building a house is a life-changing decision.

Emmadale Projects collaborates with a range of award-winning architects and interior designers to create beautiful, bespoke homes.

Company director Rod Jenkins, who has worked in the construction industry for 25 years, plays a hands-on role with each project, and is committed to delivering quality homes that exceed expectation.

“We take a maximum of five projects at once, which guarantees a carefully-planned and controlled job, and ensures our clients get the personalised service they deserve,” Rod explains.

“When my clients sign a contract with me, they know I'm the person who will be building their house. We want our clients to enjoy the experience of building their dream home – and we want to be remembered for building good quality homes,” Rod adds.

[www.emmadalegroup.com](http://www.emmadalegroup.com)



### LET IN THE LIGHT

Solar access policies in Canberra mean every home must be designed to get at least three hours of sunlight each day – and all new homes must meet a minimum six star energy efficiency standard.

“If you’re building your own home, it is important to orient your block to maximise free solar heating. There’s no block in Canberra that can’t be solar passive. Sometimes it takes a little more thought, but it can be achieved,” says Karen Porter, who operates Solace Creations double-glazing in Fyshwick.

With costs coming down, Porter says double-glazing is simply a “no brainer”.

“Single-glazed homes seem out-of-date, and increasingly, buyers see single-glazing as something they’ll need to upgrade, which

**“WHILE WALL  
AND ROOF  
INSULATION IS  
MANDATORY  
IN ALL NEW  
HOMES,  
DOUBLE-  
GLAZING  
ISN’T. THIS  
MEANS YOUR  
INVESTMENT IN  
INSULATION IS  
COMPROMISED  
BY SINGLE-  
GLAZED  
WINDOWS AND  
DOORS.**



# LYSAGHT

Call 02 6214 5200  
[www.lysaght.com](http://www.lysaght.com)

LYSAGHT® and COLORBOND® are registered trademarks of  
Bluescope Steel Limited ABN 16 000 011 058

**Colorbond®**

### THE TRUSTED EXPERIENCE IN STEEL

- ROOFING & WALLING
- RAINWATER GOODS
- FENCING
- HOME IMPROVEMENTS
- STRUCTURAL PRODUCTS
- ACCESSORIES

SUPPLIER OF QUALITY STEEL  
BUILDING PRODUCTS TO THE  
MONCRIEFF DISPLAY VILLAGE

PROUD  
SUPPORTERS OF



**MASTER BUILDERS**  
AUSTRALIAN CAPITAL TERRITORY





**RAM Living**  
Innovative solutions to design and construction.

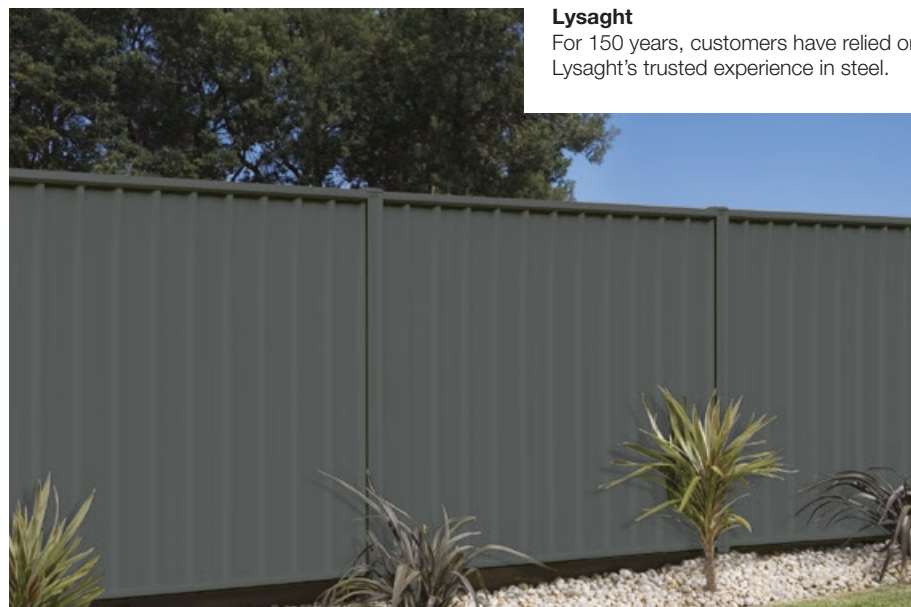
**LIGHT, AIRY  
AND FULL OF  
CHARACTER,  
THE MODHAUS'  
STREAMLINED  
LOOK CONNECTS  
INSIDE AND  
OUTSIDE SPACES**

can make them think twice about purchasing an existing dwelling. Double-glazing ensures a home is more energy efficient and comfortable, and it also increases the resale value.

“While wall and roof insulation is mandatory in all new homes, double-glazing isn’t. This means your investment in insulation is compromised by single-glazed windows and doors.

“When you double-glaze, you get a comfortable home that is warm in winter and cool in summer, and the extra money you outlay will be repaid in savings on your energy bills,” Karen adds.

**Lysaght**  
For 150 years, customers have relied on Lysaght’s trusted experience in steel.



## RAM LIVING

Building in the region for more than 40 years, the RAM Living team know the lay of the land in every Canberra suburb.

Designed to make the most of Canberra’s four glorious seasons, RAM Living homes reflect classic design and modernist style: clean lines, sturdy build and a perfect finish.

The ModHaus, RAM Living’s statement home at the Moncrieff Display Village, combines classic modernist architecture with the latest in sustainable design.

Light, airy and full of character, The ModHaus’ streamlined look connects inside and outside spaces in an energy-efficient home that packs a punch.

“Modernist design combines form and function – and that means everything we put into our homes not only looks good, but is functional and useful,” says RAM Living’s managing director, Anthony O’Brien.

“By focusing on fundamental elements like light and space – elements that never go out of style – we strive to create beautiful, functional and affordable homes.”

[www.ramconstructions.com.au](http://www.ramconstructions.com.au)

## RIVOLAND TILES

Rivoland has been supplying tiles for dream homes and investment properties for more than 30 years.

Not only does the Rivoland team understand the building process, they also understand that building a new home can be intimidating.

“There are so many amazing products out there now, and choosing the right tiles is a process of elimination not selection,” says senior interior designer and manager of Rivoland’s Mitchell showroom, Amanda Payne.

Rivoland’s experienced team guides customers through tile selections with ease from pre-contract to completion and beyond. Whether you’re seeking inspiration, advice or looking for that ‘perfect tile’, Rivoland’s showroom is a one-stop-shop for any serious home builder or renovator.

Rivoland’s exclusive ranges come from the four corners of the globe, and in all sizes, materials and finishes, including stone, glass, metals, timber, porcelain and ceramic.

“Whether you’re looking at a three-year investment or your forever home, we can help make your home unique,” Amanda says.

[www.rivoland.com.au](http://www.rivoland.com.au)



# Solace Creations is a local business that is focused on changing the face of homes in Canberra



Did you know that 30% of your wall space is windows and doors ... space that is costing you money.

Double glazed windows and doors will keep your home warmer in winter and cooler in summer, allowing the natural light and warmth and saving you hundreds of dollars in energy bills.

**Pop in and see us at our new Mega Store**

**17 Townsville Street, Fyshwick**

**or call us on 6260 1621**

**Solace  
Creations**  
*Double glazing specialists*

**Open weekdays 9 to 5 and Sat 9 to 1**

**[www.solacecreations.com.au](http://www.solacecreations.com.au)**

## CREATING THE OUTDOOR ROOM

People now understand that courtyards, alfresco eating areas, balconies and patios are simply extensions of the home, and can deliver extra liveable space and the envy of your friends too.

“The outdoor room adds an extra entertaining space – and features such as ovens, fire places and radiant heat lamps mean Canberrans can make the most of the space all year round,” Tony Palombi explains.

You don’t need to have green fingers to add value through landscaping either. Many drought-tolerant, low-maintenance gardens look great, make an outdoor space more inviting and can provide an attractive focal point in living spaces.

## THE HEART OF MODERN AUSTRALIAN SOCIETY IS THE AUSTRALIAN FAMILY. AND IT’S THE NEEDS AND DEMANDS WHICH HAVE BLOWN THE KITCHEN/LIVING ROOM CONCEPT COMPLETELY OUT OF THE WATER.

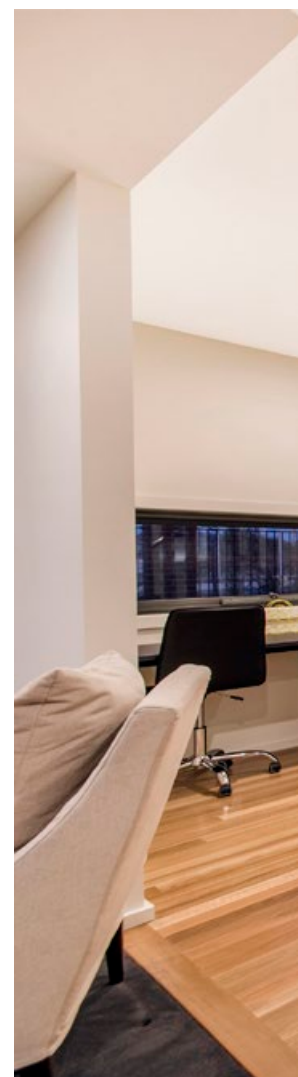
“It’s about creating an interaction between your internal and external spaces,” says RAM Living’s Anthony O’Brien.

“Landscaping can add a sense of space to a room, and a courtyard can ‘frame’ a small room and add dramatic impact. It can also add a substantial amount when it comes time to sell, as it is part of what gives a home that ‘feel good factor.’”

## HIGH TECHNOLOGY HAVENS

‘Smart’ homes that hum with automation and interconnectivity are now within reach of most homeowners, as costs come down and game-changing innovations shake up the market.

“People are looking to control their sound systems, lights, security – the works – with the press of a button,” says the other half of GR8 Constructions, Rob Petrovic.





#### Uneke Furniture

Custom-designed furniture is surprisingly affordable. You'll pay only a fraction more than what you'd spend on something shipped over from China.



**IF YOU'VE GOT AN  
OVERSIZED ROOM  
OR SPACE WITH  
TALL CEILINGS, YOU  
NEED TO SELECT  
FURNITURE IN  
PROPORTION.**



#### GR8 Constructions

Whether you're thinking of buying, building or upgrading, the choices have never been greater.

## SOLACE CREATIONS

Solace Creations is something of a broker that sources the best energy efficient windows and doors for each customer. A range of suppliers provide Solace Creations with quality, Australian made double-glazed products.

"Buying Australian-made is very important, as you can be guaranteed the product has been designed to meet the Australian standard and can perform in our harsh climate," says owner of the award-winning Canberra business, Karen Porter.

Karen has spent more than a decade helping Canberra builders and home owners save money on their energy bills and cut their carbon footprints.

"More and more, people are wanting a home that is not just stylish, but also sustainable. We've worked with many new home builders and architects to ensure their home designs feature double-glazed windows and doors that are well-insulated and ventilated," Karen says.

"Our windows aren't just efficient – they also look beautiful, and can add value to your home in the long run."

[www.solacecreations.com.au](http://www.solacecreations.com.au)

## LYSAGHT

For 150 years, customers have relied on Lysaght's trusted experience in steel.

In 1857, 25-year-old Irishman John Lysaght first saw the potential in corrugated iron sheeting and started exporting it to Australia under the trademark "Orb". Since then, Lysaght products have helped shape the nation: from the iconic shearing shed and classic outback dunny to carports, warehouses and large commercial and industrial projects.

Today, Lysaght's diverse product range now features roofing and walling, gutters and downpipes, purlins, fences, structural formwork and home improvement products.

As a division of BlueScope, Lysaght customers can rely on the backing and support of Australia's largest steelmaker. Made from 100% Aussie steel, Lysaght's products – including iconic brands COLORBOND®, ZINCALUME®, TRUECORE®, DECKFORM® and GALVASPAN® – are extensively performance-tested, backed with the strength of the BlueScope warranty, and offer customers total confidence and peace of mind.

And who isn't warmed by the comforting sound of rain on a corrugated roof?

[www.lysaght.com](http://www.lysaght.com)



## BEYOND THE PALE



White-on-white rooms may have defined the interior zeitgeist over the last few years, but colour is making a comeback.

Rivoland's Amanda Payne says Canberrans are slowly transitioning away from all-white kitchens and bathrooms.

"People are personalising their kitchen splashbacks, for example, and are willing to take a few more risks with textures and colours in bathrooms," she explains.

"We're also seeing a swing away from all white floor tiles as home owners choose timber, concrete and marble to add depth and texture."

**Large-format tiles in a range of interesting textures are all the rage, and range from rustics through to metallics. Rivoland's customers are combining a number of distinct aesthetics to create their own unique look – such as pairing French Provincial materials with a sleek, modern line.**

"The influences finding their way into our homes are changing rapidly, as Canberra changes," Amanda says, adding that many residents now hail from other parts of the world and are looking to inject elements of their own cultural heritage into their homes.

"It's an exciting time for Canberra's home design," Amanda says.

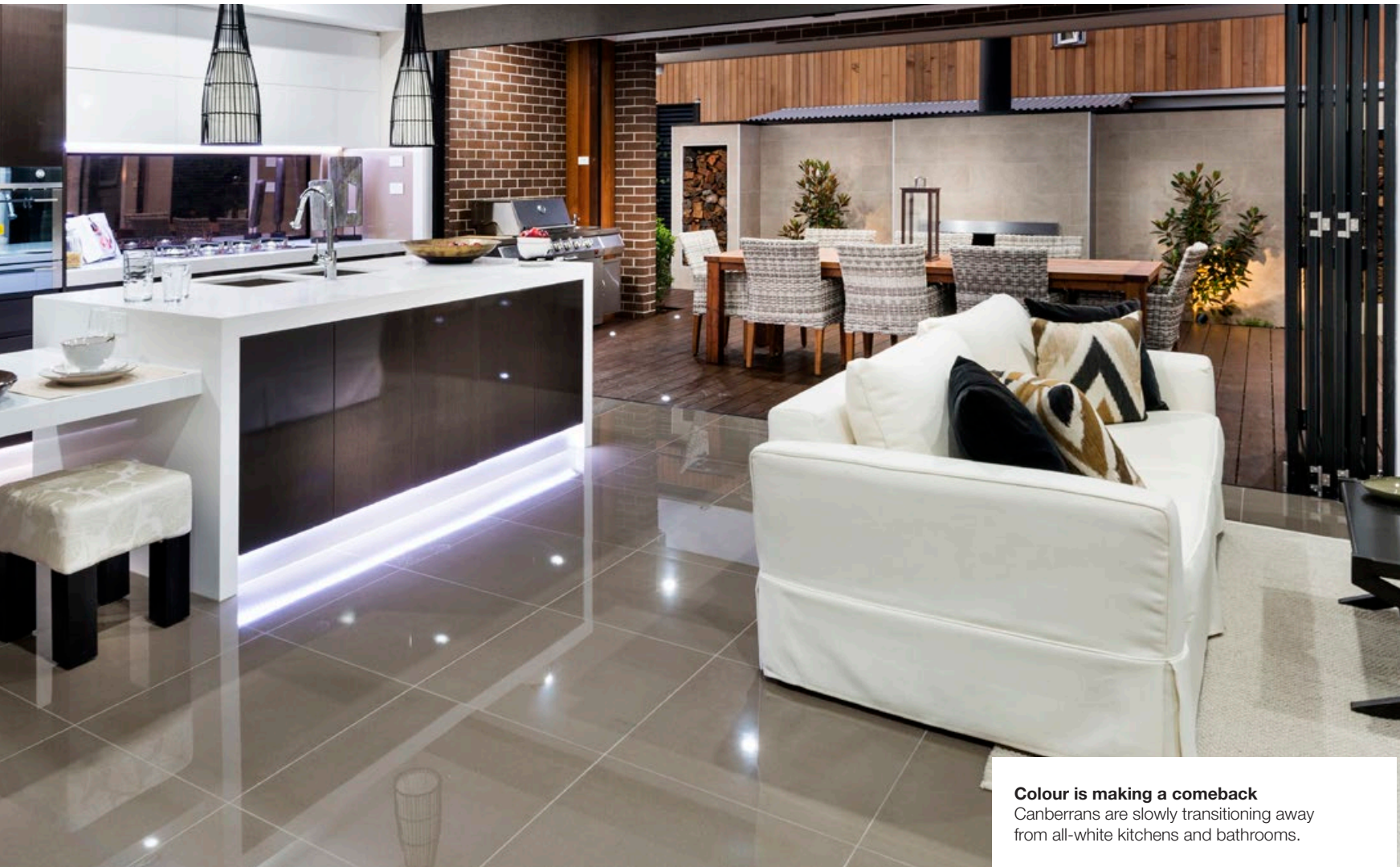


### Emmadale Projects

"We want our clients to enjoy the experience of building their dream home – and we want to be remembered for building good quality homes."







**Colour is making a comeback**

Canberrans are slowly transitioning away from all-white kitchens and bathrooms.



# HAND MADE LOCALLY WITH AUSTRALIAN & EXOTIC TIMBERS.

DESIGNERS AND MAKERS OF QUALITY TIMBER FURNITURE, AND COMMERCIAL TIMBER JOINERY COMPONENTS.

[WWW.UNEKEFURNITURE.COM](http://WWW.UNEKEFURNITURE.COM) | PH (02) 6280 4050



SHOWROOM - UNITS 7/8 CENTRECOURT CNR BARRIER & PIRIE STREETS, FYSHWICK ACT

[f](#) FIND US ON FACEBOOK



Individual appliances can be programmed to switch on and off on demand, temperature can be monitored and managed, and lights adjusted to suit the time of day.

“It’s important to invest in good quality technology, but Wifi enabled systems hooked up to your iPad are definitely affordable,” Rob adds.

Technology is changing the way we design our homes, and the material choices on offer too.

Amanda Payne, a senior interior designer and manager of Rivoland’s Mitchell showroom, says technology is driving new trends in tiling.

“Digital imprinting alone is changing the size and scale of tiling products. Think 1.6 by 3.2 metres for just one tile.

“We can offer are wider selection of products than ever before, with advancements in technology enabling customers to get a luxe look on a budget,” Amanda says.

And GR8 Constructions says technology is also giving people more confidence in their design choices.

“Styling is loosening up, as 3D design software helps people visualise their home. It removes that element of risk that you’ll

**“WE CAN OFFER ARE WIDER SELECTION OF PRODUCTS THAN EVER BEFORE, WITH ADVANCEMENTS IN TECHNOLOGY ENABLING CUSTOMERS TO GET A LUXE LOOK ON A BUDGET,” AMANDA SAYS.**

make the wrong design decision – and that’s helping people to be more adventurous and creating homes that really have the wow factor,” Grant Wilson says.

Whether you’re thinking of buying, building or upgrading, the choices have never been greater. Should you invest in a butler’s pantry or lavish spa-like ensuite? A parents’ retreat or outdoor kitchen? High-tech security or bespoke furniture? At its heart, the answer is simple. Invest in good design, top quality materials and experienced professionals to create a dream home that stands the test of time.

### Solace Creations

In a climate of extremes like Canberra, investing in insulation will provide a generous payback

## J&F HOMES

A local, family-owned building company, J&F Homes has a wealth of experience in residential construction, from contract homes and knock down-rebuilds, to townhouses and apartments.

The high-skilled and qualified team, led by Joe Perkovic and Tony Palombi, delivers professional and innovative results on time and on budget. This commitment to high-quality workmanship is on display at J&F Homes’ latest display house, The Fina, at Moncrieff.

From the huge walk-in pantry in the kitchen to the generous bedrooms with specialised internal shelving and drawers in the wardrobes, The Fina blends practicality with luxury. The well-appointed master bedroom features a stylish walk-in robe and ensuite, while the custom-designed, contemporary kitchen, overlooking spacious open living and dining areas, has been designed to maximise light, space and spectacular views of neighbouring parklands.

With more than 15 years’ experience building homes in Canberra, Joe, Tony and the team at J&F Homes know how to turn their clients’ vision into reality.

[www.jfhomes.com.au](http://www.jfhomes.com.au)

## UNEKE FURNITURE

Established 34 years ago in the ACT, Uneke Furniture is not your run-of-the-mill furniture store.

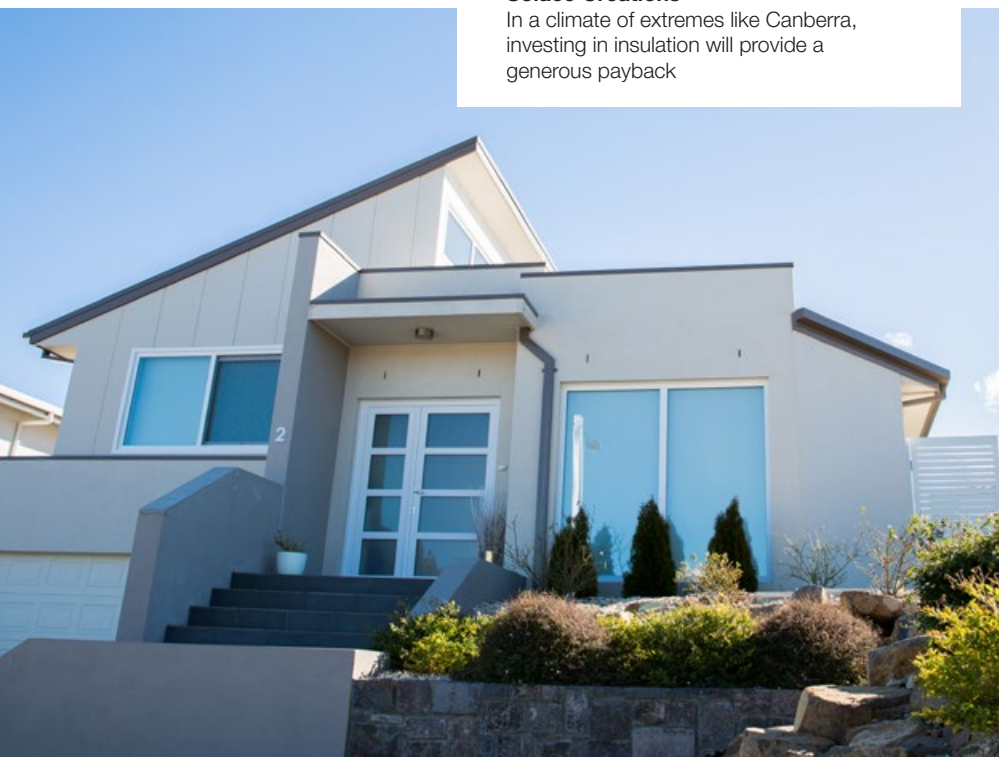
Covering every aspect of furniture design, manufacture and retailing, the team at Uneke Furniture want their customers to enjoy the experience of owning something special that can be handed down for generations.

Specialising in Australian solid timbers and veneers, as well as painted and lacquer finishes, Uneke Furniture has a wide variety of suites and styles on display in its Fyshwick showroom, while the team of talented furniture makers are busy in the Bungendore workshop.

“Our showroom has been the envy of interior designers for decades – but we can also take a customer’s dream and turn it into reality,” says Uneke Furniture’s owner, Dan Power.

Uneke Furniture pieces are all made in the Canberra region with a full 10 year guarantee, so customers can return for another made-to-measure piece that matches their own unique style and space.

[www.unekefurniture.com.au](http://www.unekefurniture.com.au)







**Professional and  
innovative projects of  
only the highest quality.**

J&F Homes Pty Ltd is a local family owned building business that has been operating in the A.C.T region for over 15 years. Our mission is to deliver professional and innovative building projects on time and on budget, where only the highest quality and professional service is provided.

- Contract homes, house and land packages, knock down – rebuilds, townhouse developments and apartments.
- A highly skilled, specialised and qualified team provides excellence in building and construction.
- Offers competitive inclusions to clients, making their vision a reality.



**0402 962 799 | [joe@jfhomes.com.au](mailto:joe@jfhomes.com.au) | [www.jfhomes.com.au](http://www.jfhomes.com.au)**

ACT Licence no. 200413799 | ACN: 109 372 689



*You deserve a GR8 Home!*



**Visit our display home: 1 Engel st Coombs  
Open Sat & Sun 11 am -4 pm**

P: 0438225212 E: [sales@gr8constructions.com.au](mailto:sales@gr8constructions.com.au)

[www.gr8constructions.com.au](http://www.gr8constructions.com.au)

ABN 83 159275304 ACT licence 20121385 NSW licence 261932C



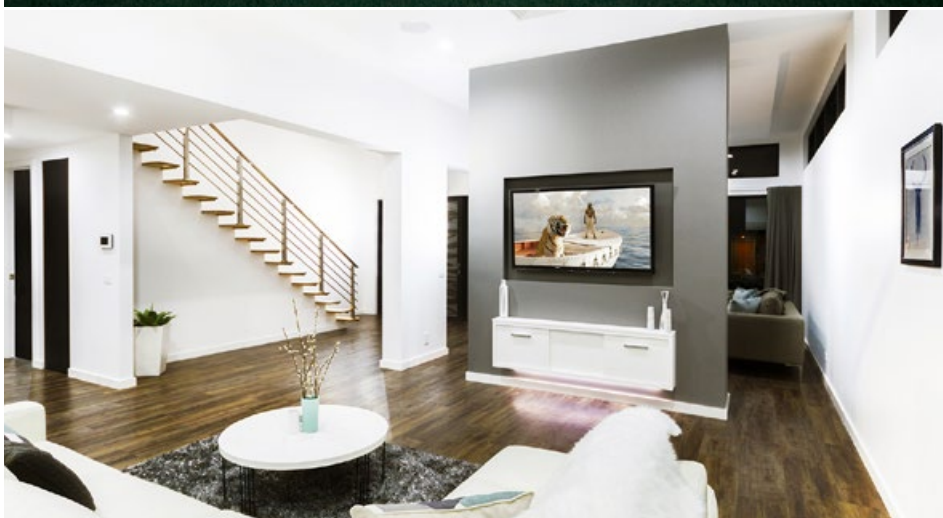
HOUSE OF THE YEAR  
2016 FINALISTS



**CUSTOM BUILT HOMES  
MORE THAN 350M<sup>2</sup>**

BETTER BUILDING SERVICES;  
DNA ARCHITECTS;  
SUGAR DESIGNS

SUBURB: GOOGONG



**DISPLAY HOMES  
MORE THAN 225M<sup>2</sup>**

BLD HOMES

SUBURB: COOMBS



**CUSTOM BUILT HOMES  
250M<sup>2</sup> - 350M<sup>2</sup>**

CHAMPNESS BUILDERS PTY LTD;  
SUGAR DESIGNS

SUBURB: HACKETT



**PROJECT HOMES  
MORE THAN \$300,000**

CLASSIC CONSTRUCTIONS

SUBURB: GRIFFITH





Geostone<sup>TM</sup>  
Makes you  
look down



*... and around*



*... and inside*



*... and beyond*

Looking down feels really good with Geostone, Holcim Australia's decorative concrete range.

Not only does it connect the way we live at home, it can also draw us a little closer to nature by fusing the uniqueness and beauty of Australian stone with premium reinforced concrete. Interconnecting floor surfaces is a perfect way to create a seamless, internal external feel. And Geostone can be exposed for durable driveways, pathways and landscaping, it can be polished for a highly glossy, smooth surface in indoor living areas or, it can be honed for comfort and durability in outdoor entertaining areas from patio to poolside.

To find out more phone 13 11 88 or visit [www.geostone.com.au](http://www.geostone.com.au)

Strength. Performance. Passion.





# A W A R D FINALISTS



## CUSTOM BUILT HOME MORE THAN 350M<sup>2</sup>

FINALISTS  
BETTER BUILDING SERVICES;  
DNA ARCHITECTS;  
SUGAR DESIGNS

SUBURB  
GOOGONG



## CUSTOM BUILT HOME MORE THAN 350M<sup>2</sup>

FINALIST  
NJR HOMES

SUBURB  
RED HILL



## CUSTOM BUILT HOME MORE THAN 350M<sup>2</sup>

FINALIST  
CLASSIC CONSTRUCTIONS

SUBURB  
JERRABOMBERRA



## CUSTOM BUILT HOME MORE THAN 350M<sup>2</sup>

FINALISTS  
JCJ HOMES;  
ARCHITECTS RING & ASSOCIATES;  
ARCHERTEC INTERIORS

SUBURB  
FORDE



## CUSTOM BUILT HOME 250M<sup>2</sup> -350M<sup>2</sup>

FINALIST  
MCDONALD & CO

SUBURB  
CRACE



## CUSTOM BUILT HOME 250M<sup>2</sup> -350M<sup>2</sup>

FINALIST  
FULL CIRCLE CONSTRUCTIONS

SUBURB  
YARRALUMLA



## CUSTOM BUILT HOME 250M<sup>2</sup> -350M<sup>2</sup>

FINALIST  
ACHIEVE HOMES

SUBURB  
GOOGONG



## CUSTOM BUILT HOME 250M<sup>2</sup> -350M<sup>2</sup>

FINALIST  
ESTABLISHED BUILDERS

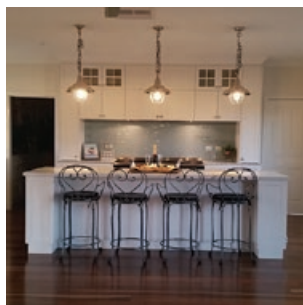
SUBURB  
COOMBS



## CUSTOM BUILT HOME 250M<sup>2</sup> -350M<sup>2</sup>

FINALIST  
MEIER BUILDING SERVICES

SUBURB  
GRIFFITH



## CUSTOM BUILT HOME 250M<sup>2</sup> -350M<sup>2</sup>

FINALIST  
RELIABUILT PTD LTD

SUBURB  
ROYALLA



## CUSTOM BUILT HOME 250M<sup>2</sup> -350M<sup>2</sup>

FINALISTS  
360 BUILDING SOLUTIONS;  
THE MILL ARCHITECTURE & DESIGN

SUBURB  
KALEEN



## CUSTOM BUILT HOME 250M<sup>2</sup> -350M<sup>2</sup>

FINALISTS  
EMMA DALE GROUP;  
ARCHITECTS RING & ASSOCIATES;  
THE DEPT. OF DESIGN

SUBURB  
YARRALUMLA



# AWARD FINALISTS



## CUSTOM BUILT HOME 250M<sup>2</sup> -350M<sup>2</sup>

FINALIST  
CHAMPNESS BUILDERS PTY LTD;  
SUGAR DESIGNS

SUBURB  
HACKETT



## CUSTOM BUILT HOME 250M<sup>2</sup> -350M<sup>2</sup>

FINALIST  
M BUILDING GROUP

SUBURB  
CRACE



## CUSTOM BUILT HOME 150M<sup>2</sup> -250M<sup>2</sup>

FINALISTS  
HINDS CONSTRUCTION

SUBURB  
CASEY



## CUSTOM BUILT HOME 150M<sup>2</sup> -250M<sup>2</sup>

FINALISTS  
CAPITAL COMPLETE  
CONSTRUCTION

SUBURB  
BONNER



## CUSTOM BUILT HOME 150M<sup>2</sup> -250M<sup>2</sup>

FINALISTS  
ABODE CONSTRUCTIONS &  
DEVELOPMENTS

SUBURB  
COOMBS



## CUSTOM BUILT HOME 150M<sup>2</sup> -250M<sup>2</sup>

FINALIST  
EWER CONSTRUCTIONS

SUBURB  
CHIFLEY



## CUSTOM BUILT HOME 150M<sup>2</sup> -250M<sup>2</sup>

FINALIST  
GREEN ALLIANCE HOMES

SUBURB  
CRACE



## CUSTOM BUILT HOME 150M<sup>2</sup> -250M<sup>2</sup>

FINALIST  
PROSTYLE BUILDING GROUP

SUBURB  
CURTIN



## CUSTOM BUILT HOME 150M<sup>2</sup> -250M<sup>2</sup>

FINALIST  
ACHIEVE HOMES

SUBURB  
COOMBS



## CUSTOM BUILT HOME 150M<sup>2</sup> -250M<sup>2</sup>

FINALIST  
PEAK BUILDING

SUBURB  
COOMBS



## CUSTOM BUILT HOME 150M<sup>2</sup> -250M<sup>2</sup>

FINALISTS  
MBS HOUSING  
THE DEPT. OF DESIGN

SUBURB  
MONCRIEFF



## CUSTOM BUILT HOME 150M<sup>2</sup> -250M<sup>2</sup>

FINALIST  
PRECAST HOMES

SUBURB  
GOOGONG



# A W A R D FINALISTS



## CUSTOM BUILT HOME 150M<sup>2</sup> -250M<sup>2</sup>

FINALIST  
BLACKETT PROPERTY GROUP  
SUBURB  
TORRENS



## CUSTOM BUILT HOME 150M<sup>2</sup> -250M<sup>2</sup>

FINALISTS  
VISCON HOMES;  
DNA ARCHITECTS  
SUBURB  
CASEY



## CUSTOM BUILT HOME LESS THAN 150M<sup>2</sup>

FINALIST  
VOGUE CONSTRUCTIONS PTY LTD  
SUBURB  
GOOGONG



## CUSTOM BUILT HOME LESS THAN 150M<sup>2</sup>

FINALISTS  
CAPITAL COMPLETE  
CONSTRUCTION  
SUBURB  
NGUNNAWAL



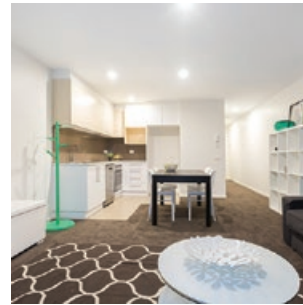
## CUSTOM BUILT HOME LESS THAN 150M<sup>2</sup>

FINALISTS  
360 BUILDING SOLUTIONS;  
THE MILL ARCHITECTURE  
& DESIGN  
SUBURB  
COOMBS



## CHIEF MINISTER'S AFFORDABLE HOUSING

FINALISTS  
CHASE BUILDING GROUP  
(CANBERRA) PTY LIMITED  
PROJECT  
BENHAM APARTMENTS



## CHIEF MINISTER'S AFFORDABLE HOUSING

FINALISTS  
PBS BUILDING;  
CHC AFFORDABLE HOUSING;  
KASPAREK ARCHITECTS  
PROJECT  
SYMPHONY PARK STAGE 2



## APARTMENTS AND UNITS FOUR STOREYS AND ABOVE

FINALIST  
HINDMARSH CONSTRUCTION  
PROJECT  
THE CRESWELL RESIDENCES



## APARTMENTS AND UNITS FOUR STOREYS AND ABOVE

FINALIST  
CONSTRUCTION CONTROL  
PROJECT  
BASE241



## APARTMENTS AND UNITS FOUR STOREYS AND ABOVE

FINALISTS  
MILIN BUILDERS PTY LTD;  
ARCHITECTS RING & ASSOCIATES  
PROJECT  
BROOKLYN



## APARTMENTS AND UNITS FOUR STOREYS AND ABOVE

FINALISTS  
CONSOLIDATED BUILDERS  
LIMITED;  
MILIN BUILDERS PTY LTD  
PROJECT  
THE KINGSTON



## APARTMENTS AND UNITS FOUR STOREYS AND ABOVE

FINALIST  
GEOCON  
PROJECT  
OBSERVATORY LIVING



# A W A R D FINALISTS



## APARTMENTS AND UNITS FOUR STOREYS AND ABOVE

FINALISTS  
CHASE BUILDING GROUP  
(CANBERRA) PTY LIMITED

PROJECT  
ELEMENT APARTMENTS



## APARTMENTS AND UNITS UP TO THREE STOREYS

FINALIST  
MCGILVRAY PROJECTS PTY LTD

PROJECT  
JANDURA APARTMENTS



## APARTMENTS AND UNITS UP TO THREE STOREYS

FINALISTS  
PBS BUILDING;  
CHC AFFORDABLE HOUSING;  
KASPAREK ARCHITECTS

PROJECT  
SYMPHONY PARK STAGE 2



## APARTMENTS AND UNITS UP TO THREE STOREYS

FINALISTS  
CHASE BUILDING GROUP  
(CANBERRA) PTY LIMITED;  
AMALGAMATED PROPERTY  
GROUP

PROJECT  
AMAYA APARTMENTS



## DISPLAY HOMES MORE THAN 225M<sup>2</sup>

FINALIST  
MCDONALD JONES HOMES

SUBURB  
MONCRIEFF



## DISPLAY HOMES MORE THAN 225M<sup>2</sup>

FINALIST  
GR8 CONSTRUCTIONS

SUBURB  
COOMBS



## DISPLAY HOMES MORE THAN 225M<sup>2</sup>

FINALIST  
TWENTY20 PROJECTS PTY LTD

SUBURB  
COOMBS



## DISPLAY HOMES MORE THAN 225M<sup>2</sup>

FINALIST  
RAWSON HOMES

SUBURB  
MONCRIEFF



## DISPLAY HOMES MORE THAN 225M<sup>2</sup>

FINALIST  
MCDONALD JONES HOMES

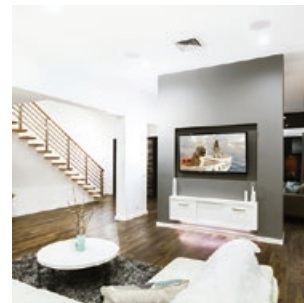
SUBURB  
WRIGHT



## DISPLAY HOMES MORE THAN 225M<sup>2</sup>

FINALISTS  
EMMADALE GROUP ;  
ARCHITECTS RING & ASSOCIATES;  
THE DEPT. OF DESIGN

SUBURB  
YARRALUMLA



## DISPLAY HOMES MORE THAN 225M<sup>2</sup>

FINALIST  
BLD HOMES

SUBURB  
COOMBS



## DISPLAY HOMES LESS THAN 225M<sup>2</sup>

FINALIST  
KOLAK LIVING

SUBURB  
COOMBS



# AWARD FINALISTS



## DISPLAY HOMES LESS THAN 225M<sup>2</sup>

FINALIST  
G.J. GARDNER HOMES

SUBURB  
MONCRIEFF



## DISPLAY HOMES LESS THAN 225M<sup>2</sup>

FINALIST  
SIENNA HOMES (ACT)

SUBURB  
CASEY



## DISPLAY HOMES LESS THAN 225M<sup>2</sup>

FINALIST  
ACHIEVE HOMES

SUBURB  
MONCRIEFF



## DISPLAY HOMES LESS THAN 225M<sup>2</sup>

FINALIST  
VOGUE CONSTRUCTIONS PTY LTD

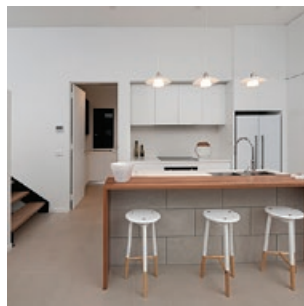
SUBURB  
COOMBS



## DISPLAY HOMES LESS THAN 225M<sup>2</sup>

FINALISTS  
MBS HOUSING;  
THE DEPT. OF DESIGN

SUBURB  
MONCRIEFF



## DISPLAY HOMES LESS THAN 225M<sup>2</sup>

FINALIST  
RAM CONSTRUCTIONS

SUBURB  
MONCRIEFF



## DISPLAY HOMES LESS THAN 225M<sup>2</sup>

FINALIST  
BLACKETT PROPERTY GROUP

SUBURB  
COOMBS



## DISPLAY HOMES LESS THAN 225M<sup>2</sup>

FINALIST  
J&F HOMES PTY LTD

SUBURB  
MONCRIEFF



## PROJECT HOMES MORE THAN \$300,000

FINALIST  
CLASSIC CONSTRUCTIONS

SUBURB  
GRIFFITH



## PROJECT HOMES MORE THAN \$300,000

FINALIST  
BLACKETT PROPERTY GROUP

SUBURB  
COOMBS



## PROJECT HOMES MORE THAN \$300,000

FINALIST  
RENAISSANCE HOMES

SUBURB  
CAMPBELL



## PROJECT HOMES LESS THAN \$300,000

FINALIST  
KOLAK LIVING

SUBURB  
COOMBS



# AWARD FINALISTS



## PROJECT HOMES LESS THAN \$300,000

FINALIST  
ACHIEVE HOMES

SUBURB  
GOOGONG



## PROJECT HOMES LESS THAN \$300,000

FINALIST  
RENAISSANCE HOMES

SUBURB  
MONCRIEFF



## MEDIUM DENSITY TOWNHOUSES & VILLAS

FINALIST  
RAM CONSTRUCTIONS

SUBURB  
CHIFLEY



## MEDIUM DENSITY TOWNHOUSES & VILLAS

FINALISTS  
ART HOMES;  
DNA ARCHITECTS

SUBURB  
FRANKLIN



## MEDIUM DENSITY TOWNHOUSES & VILLAS

FINALISTS  
BELLEVUE BUILDING;  
DNA ARCHITECTS

SUBURB  
ARANDA



## REMODELLING MORE THAN \$450,000

FINALISTS  
PROSTYLE BUILDING GROUP P/L;  
TT ARCHITECTURE

SUBURB  
HAWKER



## REMODELLING MORE THAN \$450,000

FINALIST  
WALMSLEY BUILDING SOLUTIONS

SUBURB  
GRIFFITH



## REMODELLING MORE THAN \$450,000

FINALISTS  
ACUMEN CARPENTRY AND  
BUILDING SERVICES

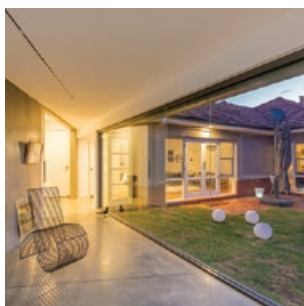
SUBURB  
GRIFFITH



## REMODELLING MORE THAN \$450,000

FINALIST  
PROHAUS PTY LTD

SUBURB  
LYONS



## REMODELLING MORE THAN \$450,000

FINALIST  
CHAPMAN BUILT

SUBURB  
REID



## REMODELLING MORE THAN \$450,000

FINALISTS  
MANTEENA;  
STEVE ANDREA ARCHITECTURE;  
KARIN MCNAMARA DESIGN

SUBURB  
FORREST



## REMODELLING MORE THAN \$450,000

FINALIST  
ICHOR CONSTRUCTIONS

SUBURB  
DEAKIN



# A W A R D FINALISTS



## REMODELLING MORE THAN \$450,000

FINALISTS  
CHAMPNESS BUILDERS PTY LTD;  
STEVE ANDREA ARCHITECTURE  
P/L

SUBURB  
GRIFFITH



## REMODELLING MORE THAN \$450,000

FINALIST  
BROTHER PROJECTS

SUBURB  
FORREST



## REMODELLING MORE THAN \$450,000

FINALIST  
BUILD PROFESSIONAL

SUBURB  
O'CONNOR



## REMODELLING \$250,000 - \$450,000

FINALIST  
TAYLOR & KNOWLES BESPOKE  
BUILDING

SUBURB  
STIRLING



## REMODELLING \$250,000 - \$450,000

FINALISTS  
TORRES BUILDING GROUP;  
TT ARCHITECTURE

SUBURB  
DICKSON



## REMODELLING \$250,000 - \$450,000

FINALISTS  
BELLEVUE BUILDING;  
DNA ARCHITECTS

SUBURB  
O'CONNOR



## REMODELLING \$250,000 - \$450,000

FINALISTS  
WALMSLEY BUILDING SOLUTIONS;  
SHORELINE BUILDING CONTRACTORS

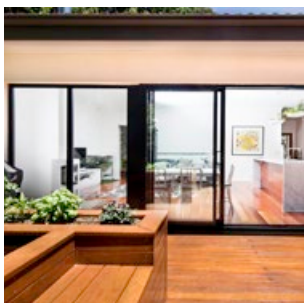
SUBURB  
AINSLIE



## REMODELLING \$250,000 - \$450,000

FINALISTS  
BROTHER PROJECTS;  
MMM INTERIORS

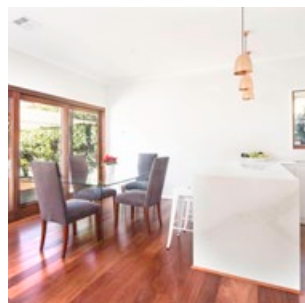
SUBURB  
URIARRA



## REMODELLING \$250,000 - \$450,000

FINALIST  
BUILD PROFESSIONAL

SUBURB  
GRIFFITH



## REMODELLING \$150,000 - \$250,000

FINALIST  
BUILD PROFESSIONAL

SUBURB  
YARRALUMLA



## REMODELLING \$150,000 - \$250,000

FINALIST  
FUTURE BUILDING

SUBURB  
KINGSTON



## REMODELLING \$150,000 - \$250,000

FINALISTS  
BANYAN CONSTRUCTIONS;  
MMM INTERIORS

SUBURB  
WATSON



# AWARD FINALISTS



**REMODELLING**  
\$150,000 - \$250,000

FINALISTS  
BROTHER PROJECTS;  
MMM INTERIORS

SUBURB  
MELBA



**REMODELLING**  
\$150,000 - \$250,000

FINALIST  
BUILD PROFESSIONAL

SUBURB  
FISHER



**REMODELLING**  
\$150,000 - \$250,000

FINALIST  
FUTURE BUILDING

SUBURB  
AINSLIE



**REMODELLING**  
LESS THAN \$150,000

FINALIST  
SCOTT HALLEY HOMES

SUBURB  
DEAKIN



**REMODELLING**  
LESS THAN \$150,000

FINALIST  
BUILD PROFESSIONAL

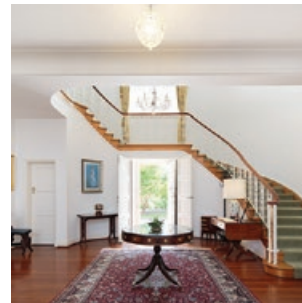
SUBURB  
GRIFFITH



**HERITAGE RESTORATION  
AND REFURBISHMENT**

FINALISTS  
ACUMEN CARPENTRY AND  
BUILDING SERVICES

SUBURB  
GRIFFITH



**HERITAGE RESTORATION  
AND REFURBISHMENT**

FINALIST  
ICHOR CONSTRUCTIONS

SUBURB  
DEAKIN



**HERITAGE RESTORATION  
AND REFURBISHMENT**

FINALISTS  
CHAMPNESS BUILDERS PTY LTD;  
STEVE ANDREA ARCHITECTURE P/L

SUBURB  
GRIFFITH



**HERITAGE RESTORATION  
AND REFURBISHMENT**

FINALIST  
CHAPMAN BUILT

SUBURB  
REID



**HERITAGE RESTORATION  
AND REFURBISHMENT**

FINALISTS  
MANTEENA;  
STEVE ANDREA ARCHITECTURE;  
KARIN MCNAMARA DESIGN

SUBURB  
FORREST



**HERITAGE RESTORATION  
AND REFURBISHMENT**

FINALIST  
FUTURE BUILDING

SUBURB  
KINGSTON



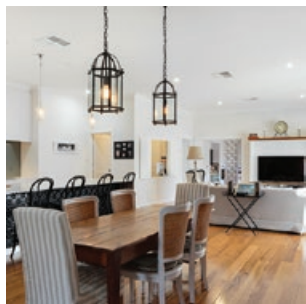
**HERITAGE RESTORATION  
AND REFURBISHMENT**

FINALIST  
FUTURE BUILDING

SUBURB  
AINSLIE



A W A R D  
FINALISTS



HERITAGE RESTORATION  
AND REFURBISHMENT

FINALIST  
BROTHER PROJECTS

SUBURB  
FORREST



SPECIAL PURPOSE DWELLING/  
ADAPTABLE DWELLING

FINALISTS  
RENAISSANCE HOMES;  
KASPAREK ARCHITECTS;  
CHC AFFORDABLE HOUSING

PROJECT  
MCKELLAR GROUP HOME



SPECIAL PURPOSE DWELLING/  
ADAPTABLE DWELLING

FINALIST  
MANTEENA

PROJECT  
RICKY STUART HOUSE -  
AUTISM RESPITE CENTRE



SPECIAL PURPOSE DWELLING/  
ADAPTABLE DWELLING

FINALISTS  
RAM CONSTRUCTIONS;  
AMC + ARCHITECTURE

PROJECT  
PROJECT INDEPENDENCE  
HARRISON



SPECIAL PURPOSE DWELLING/  
ADAPTABLE DWELLING

FINALISTS  
CHASE BUILDING GROUP  
(CANBERRA) PTY LIMITED

PROJECT  
BENHAM APARTMENTS



SPECIAL PURPOSE DWELLING/  
ADAPTABLE DWELLING

FINALIST  
FUTURE BUILDING

PROJECT  
AINSLIE HERITAGE HOME



SPECIAL PURPOSE DWELLING/  
ADAPTABLE DWELLING

FINALISTS  
PROJECT COORDINATION  
(AUSTRALIA)

PROJECT  
BANKSIA VILLAGE - NEW  
RESIDENTIAL CARE VILLAGE



KITCHEN PROJECT  
MORE THAN \$30,000

FINALIST  
HEINIGER JOINERY

SUBURB  
JERRABOMBERRA



KITCHEN PROJECT  
MORE THAN \$30,000

FINALISTS  
CAPITAL VENEERING;  
MMM INTERIORS

SUBURB  
FORREST



KITCHEN PROJECT  
MORE THAN \$30,000

FINALIST  
J & J INTERIORS PTY LTD

SUBURB  
MITCHELL



KITCHEN PROJECT  
MORE THAN \$30,000

FINALIST  
SELECT CUSTOM JOINERY

SUBURB  
O'CONNOR



KITCHEN PROJECT  
MORE THAN \$30,000

FINALIST  
SELECT CUSTOM JOINERY

SUBURB  
CURTIN



# AWARD FINALISTS



## KITCHEN PROJECT MORE THAN \$30,000

FINALIST  
CAPITAL VENEERING PTY LTD

SUBURB  
CHAPMAN



## KITCHEN PROJECT MORE THAN \$30,000

FINALISTS  
EMMADALE GROUP;  
THE DEPT OF DESIGN

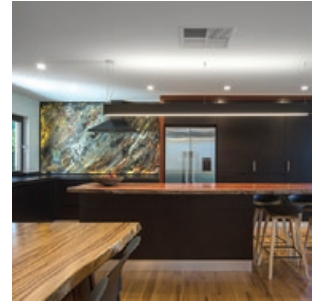
SUBURB  
YARRALUMLA



## KITCHEN PROJECT MORE THAN \$30,000

FINALISTS  
SIMPLICITY KITCHENS  
WAYNE GOODWIN BUILDING  
SERVICES  
THE DEPT. OF DESIGN

SUBURB  
BYWONG



## KITCHEN PROJECT MORE THAN \$30,000

FINALISTS  
CAPITAL VENEERING PTY LTD;  
KARIN MCNAMARA DESIGNS

SUBURB  
CHAPMAN



## KITCHEN PROJECT MORE THAN \$30,000

FINALIST  
P&K JOINERY

SUBURB  
GRIFFITH



## KITCHEN PROJECT MORE THAN \$30,000

FINALISTS  
OFM DIRECT;  
ARCHERTEC INTERIORS

SUBURB  
YARRALUMLA



## KITCHEN PROJECT LESS THAN \$30,000

FINALISTS  
HEINIGER JOINERY;  
PROSTYLE BUILDING GROUP

SUBURB  
CURTIN



## KITCHEN PROJECT LESS THAN \$30,000

FINALIST  
TWENTY20 PROJECTS PTY LTD

SUBURB  
COOMBS



## KITCHEN PROJECT LESS THAN \$30,000

FINALIST  
MCDONALD & CO

SUBURB  
CRACE



## KITCHEN PROJECT LESS THAN \$30,000

FINALIST  
ABODE CONSTRUCTIONS &  
DEVELOPMENTS

SUBURB  
CALWELL



## KITCHEN PROJECT LESS THAN \$30,000

FINALISTS  
ALLIANCE BUILDING GROUP;  
THE MILL ARCHITECTURE &  
DESIGN

SUBURB  
CHAPMAN



## KITCHEN PROJECT LESS THAN \$30,000

FINALISTS  
360 BUILDING SOLUTIONS;  
THE MILL ARCHITECTURE &  
DESIGN

SUBURB  
KALEEN



# AWARD FINALISTS



## KITCHEN PROJECT LESS THAN \$30,000

FINALIST  
ESTABLISHED BUILDERS

SUBURB  
COOMBS



## KITCHEN PROJECT LESS THAN \$30,000

FINALISTS  
MBS HOUSING  
THE DEPT. OF DESIGN

SUBURB  
MONCRIEFF



## KITCHEN PROJECT LESS THAN \$30,000

FINALISTS  
KITCHEN LINK;  
BLACKETT PROPERTY GROUP

SUBURB  
COOMBS



## KITCHEN PROJECT LESS THAN \$30,000

FINALISTS  
PIONEER KITCHENS;  
ARCHERTEC INTERIORS

SUBURB  
GOOGONG



## BATHROOM PROJECT MORE THAN \$30,000

FINALISTS  
MANTEENA;  
KARIN MCNAMARA DESIGN

SUBURB  
FORREST



## BATHROOM PROJECT MORE THAN \$30,000

FINALISTS  
BROTHER PROJECTS;  
MMM INTERIORS

SUBURB  
GRIFFITH



## BATHROOM PROJECT MORE THAN \$30,000

FINALIST  
P&K JOINERY

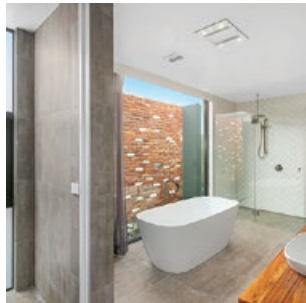
SUBURB  
FADDEN



## BATHROOM PROJECT LESS THAN \$30,000

FINALIST  
TWENTY20 PROJECTS PTY LTD

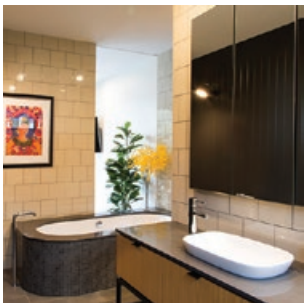
SUBURB  
COOMBS



## BATHROOM PROJECT LESS THAN \$30,000

FINALISTS  
MCDONALD & CO

SUBURB  
CRACE



## BATHROOM PROJECT LESS THAN \$30,000

FINALIST  
MEIER BUILDING SERVICES

SUBURB  
GRIFFITH



## BATHROOM PROJECT LESS THAN \$30,000

FINALISTS  
INSPIRED BUILDING GROUP P/L

SUBURB  
HOLDER



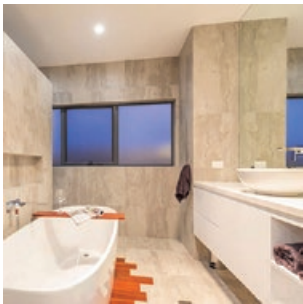
## BATHROOM PROJECT LESS THAN \$30,000

FINALIST  
EMMADALE GROUP;  
THE DEPT. OF DESIGN

SUBURB  
YARRALUMLA



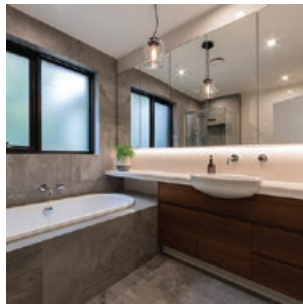
# AWARD FINALISTS



## BATHROOM PROJECT LESS THAN \$30,000

FINALIST  
M BUILDING GROUP

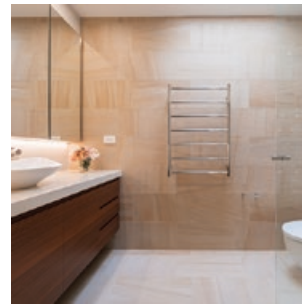
SUBURB  
CRACE



## BATHROOM PROJECT LESS THAN \$30,000

FINALISTS  
OFM DIRECT;  
ARCHERTEC INTERIORS

SUBURB  
YARRALUMLA



## BATHROOM PROJECT LESS THAN \$30,000

FINALISTS  
OFM DIRECT;  
ARCHERTEC INTERIORS

SUBURB  
YARRALUMLA



## BEST USE OF MATERIAL - INTERIOR

FINALIST  
KOLAK LIVING

SUBURB  
COOMBS



## BEST USE OF MATERIAL - INTERIOR

FINALIST  
MCDONALD & CO

SUBURB  
CRACE



## BEST USE OF MATERIAL - INTERIOR

FINALIST  
SELECT CUSTOM JOINERY

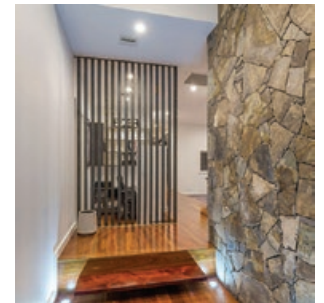
SUBURB  
JEIR



## BEST USE OF MATERIAL - INTERIOR

FINALIST  
ESTABLISHED BUILDERS

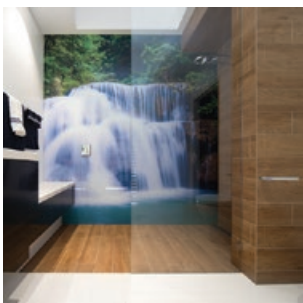
SUBURB  
COOMBS



## BEST USE OF MATERIAL - INTERIOR

FINALIST  
M BUILDING GROUP

SUBURB  
CRACE



## BEST USE OF MATERIAL - INTERIOR

FINALIST  
SIMPLY CERAMICS

SUBURB  
GOOGONG



## BEST USE OF MATERIAL - INTERIOR

FINALIST  
TWENTY20 PROJECTS PTY LTD

SUBURB  
COOMBS



## BEST USE OF MATERIAL - EXTERIOR

FINALIST  
PRECAST PROJECTS

SUBURB  
GUNGAHLIN



## BEST USE OF MATERIAL - EXTERIOR

FINALIST  
TWENTY20 PROJECTS PTY LTD

SUBURB  
COOMBS



A W A R D  
FINALISTS



**BEST USE OF MATERIAL -  
EXTERIOR**

FINALIST  
KOLAK LIVING

SUBURB  
COOMBS



**BEST USE OF MATERIAL -  
EXTERIOR**

FINALIST  
PRECAST HOMES

SUBURB  
GOOGONG



**BEST USE OF MATERIAL -  
EXTERIOR**

FINALIST  
ESTABLISHED BUILDERS

SUBURB  
COOMBS



**SUSTAINABLE CONSTRUCTION**

FINALISTS  
360 BUILDING SOLUTIONS;  
THE MILL ARCHITECTURE &  
DESIGN

SUBURB  
COOMBS



**SUSTAINABLE CONSTRUCTION**

FINALIST  
IDEAL BUILDING SOLUTIONS

SUBURB  
GUNDAROO



**SUSTAINABLE CONSTRUCTION**

FINALIST  
MODARCH PTY LTD

SUBURB  
WRIGHT



**WORK, HEALTH AND SAFETY  
LARGE SCALE**

FINALIST  
GEOCON

SUBURB  
BELCONNEN



**WORK, HEALTH AND SAFETY  
LARGE SCALE**

FINALIST  
MILIN BUILDERS PTY LTD

SUBURB  
PHILLIP



**WORK, HEALTH AND SAFETY  
SMALL SCALE**

FINALIST  
BREMA GROUP

SUBURB  
KAMBAH



**WORK, HEALTH AND SAFETY  
SMALL SCALE**

FINALIST  
ACHIEVE HOMES

SUBURB  
LAWSON



**LANDSCAPE DESIGN**

FINALIST  
KOLAK LIVING

SUBURB  
COOMBS



**LANDSCAPE DESIGN**

FINALIST  
THE LIVING ROOM LANDSCAPES

SUBURB  
FORREST



# CHARITY STARTS AT HOME – OR IN MASTER BUILDERS’ CASE WITH TWO HOMES.

THE **DEAKIN CHARITY HOUSE PROJECT** IS THE BRAINCHILD OF MASTER BUILDERS ACT, AND AIMS TO RAISE MORE THAN A MILLION DOLLARS FOR THREE LOCAL CHARITIES THIS YEAR.

The Deakin Charity House project is the brainchild of Master Builders ACT, and aims to raise more than a million dollars for three local charities this year.

**The Land Development Agency** has contributed two adjoining separate title infill blocks in Deakin, and members of MBA ACT are donating materials, professional services and labour as the homes start to take shape.

“Our industry is made up of many long-time Canberra families with an enduring commitment to this city,” explains MBA’s Director of Commercial Operations, David Leitch.

“Our members value the opportunity to give back to their community, and have donated more than \$750,000 in time, hard work, expertise and materials to get this project off the ground.”

#### Local support

CRT’s Managing Director Tim Wilson (L) with Renaissance Homes’ Andrew Kerec at the Deakin Charity House project site.



**Together for local charities**  
Mark Newman (Renaissance Homes) with Tony Carnovale (Ern Smith) and Phil Saunders (Professional Plaster Lining) at the Charity House site.

#### DETERMINED TO MAKE A DIFFERENCE

**Renaissance Homes** is the project’s principal partner, and for director Andrew Kerec, the project is deeply personal.

Andrew, a “born and bred Canberran”, established Renaissance Homes with his father, Lud in 1996. Six years ago, Lud was involved in a bicycle accident that left him with quadriplegia.

**“OUR MEMBERS VALUE THE OPPORTUNITY TO GIVE BACK TO THEIR COMMUNITY, AND HAVE DONATED MORE THAN \$750,000 IN TIME, HARD WORK, EXPERTISE AND MATERIALS TO GET THIS PROJECT OFF THE GROUND.”**

“Our family learnt first-hand the challenges and lack of support faced by people with high levels of disability,” Andrew explains.

Andrew and his team are now determined to help other families in Canberra through the rehabilitation process, and to “gain some life choices back”.

“It hasn’t been hard for us to get commitment from the industry,” Andrew adds. “All the subbies and MBA members have been unbelievably supportive. The experience has been quite humbling for Dad and I.



## Local Hero

### Building a better Canberra

**CRT Building Products** is manufacturing and delivering the homes’ frames and trusses at no charge.

“We have a strong relationship with Renaissance Homes, having worked with Andrew and Lud for 20 years. As this project is close to Andrew’s heart, it’s close to ours too,” says Tim Wilson, CRT’s managing director. “We’re a locally owned business that’s been around for 50 years, and we want to support the people who support us.”





## Local Hero

### Lending a helping hand

**Kitchen Link's** owner, Peter Greenberger, has gone "above and beyond" to support the project, says Andrew Kerec.

"Peter didn't just think about how he could contribute. He got in contact with six other companies that supply his business and engaged them in the Deakin Charity House vision," Andrew says.

Peter and his suppliers have saved the project a whopping \$30,000 through their generosity – but he doesn't do it for recognition.

"My son was diagnosed with cancer when he was just eight weeks old, so I understand the important role that local charities play in helping people. Today he's a pilot in Darwin, but when he was a baby we needed an extra hand – so we like to give back where we can today." Peter says.

### Charity House streetscape

AMC Architecture designed the properties with two different lifestyles in mind.

"It's really exceeded everyone's expectations – and we've now raised nearly half a million dollars in contributions from contractors and suppliers alone."

All bar one of the 53 project partners is a local Canberra company, and some contractors are contributing time and talent valued at more than \$70,000.

"This is great for the charities that benefit, but it also speaks volumes about the strength of our local industry," Andrew explains.

### CHARITY BEGINS AT HOME

Three charities will benefit from the funds raised. Boundless, an all abilities playground on the shores of Lake Burley Griffin, will receive 70 per cent of the profits from the sale of the homes.

According to Boundless Canberra's board member, Kristen Connell, the money will support the delivery of Stage Two of the park, which

**WITH THE KNOWLEDGE GAINED AND THE INCREASED SIZE AND SCALE OF THIS NEW PROJECT, WE'RE HOPING TO RAISE MORE THAN A MILLION DOLLARS," DAVID EXPLAINS.**

will mean "more fun, more accessibility and even more children able to enjoy the benefits of play."

Hands Across Canberra, which raises funds for more than 120 small charities across the Canberra region, will share its 20 per cent windfall with local groups providing important support services to people with disabilities.

Hartley Lifecare will use its share of the profits to rebuild and refurbish some of its

properties that help people with complex disabilities.

"We've had success with two charity houses in the past – in 2006 with the Jenolan Charity House and in 2013 with the Franklin Charity House. Together, these projects raised just over \$850,000. With the knowledge gained and the increased size and scale of this new project, we're hoping to raise more than a million dollars," David explains.

**"OUR FAMILY LEARNT FIRST-HAND THE CHALLENGES AND LACK OF SUPPORT FACED BY PEOPLE WITH HIGH LEVELS OF DISABILITY," ANDREW EXPLAINS.**



### Launching the project

Mix 106.3's Rod and Kristen officially launch the project at the Rex Hotel in 2015.



## GRAND DESIGNS TAKE SHAPE

The one and two storey homes, designed by AMC Architecture, are now at lock-up stage, and will be open for inspection in September.

The project's architect, Alastair MacCallum, says being able to design two homes side by side has been an unusual opportunity and ensured each dwelling benefits from maximum solar gain and attractive garden areas, while delivering loads of street appeal.

"The material palette picks up on the character of the area, with classic red bricks, white weatherboard and darker metal cladding arranged to give the homes a distinctly Deakin feel," Alastair says.

With four generous bedrooms, a study and three separate living spaces, the two storey home is ideal for a family. The three children's bedrooms and play area downstairs are connected to a common decked courtyard, while the lounge room at the front of the home, with its fireplace, provides an intimate sanctuary for the adults.

A lavish chef's kitchen is sure to be the heart of the home, while upstairs, the master bedroom and study provide privacy and extra flexibility for those needing to work.

"The design of this home was all about creating a sense of space and light with attractive views to different garden areas while affording the flexibility demanded of modern family life," Alastair explains.

The single storey dwelling has been designed for downsizers, and meets Livable Housing Australia's Gold level certification. Offering three bedrooms, including a separate master, the residence has two external and two internal living areas which are separated by a sunlit courtyard.



### Loads of street appeal

The material palette picks up on the character of the area, with classic red bricks, white weatherboard and darker metal cladding.

"The main living areas take advantage of the morning sun, with garden courtyards again a feature of this residence. This home is ideal for those wanting to downsize in their local area," Alastair adds.

## BUYERS AND INVESTORS WILL BE IMPRESSED

The doors to both homes will be opened to potential owners in August, and the project team is confident buyers and investors will be impressed.

Peter Blackshaw Real-Estate is providing pro bono services and advice, and will auction off both properties in October. Agents Louise Harget and Dan McAlpine have been involved with the project since its inception, and will be marketing the properties.

"Projects like this only work when everyone collaborates – and this has certainly been the case with the Deakin Charity House," Louise says.

"We worked closely with the architect to provide initial advice on what would be most saleable in the area to ensure the project maximises its return," Louise says.

"We're inspired to play a role in the project, and are impressed with the team's commitment



to quality – there have been no corners cut. The end result will be a great house suited to the market."

In the meantime, Andrew Kerec and his team continue to work on the two new homes, and are confident that they'll help three of Canberra's charities make dreams come true.

### Above

Andrew Barr, ACT Chief Minister at the official launch with representatives from Renaissance Homes and the three charities.

**More information** is available online: [www.mba.org.au/about-mba/charity-house-project/](http://www.mba.org.au/about-mba/charity-house-project/)





**Thank you** to the following for your generous contribution toward this important project.

106.3 FM  
AAC Environmental  
Ace Kerb Landscaping  
AMC Architecture  
ARC Reinforcements  
Asset Construction Hire  
Atlas Windows  
Auscoast Plumbing  
Austral Bricks  
Bluescope Lysaght  
Borg Manufacturing Pty Ltd (Polytec)  
Canberra Crete  
Canberra Hire  
Canberra Sand and Gravel  
Canberra Weekly  
Capital Doorworks  
Carter Holt Harvey  
Certified Building Solutions  
City Drainers  
CRT Building Products  
D & R Henderson

Damian Dawes Carpentry  
Digital Content Studios  
Elvin Group  
Ern Smith Building Supplies  
ESP Electrical Services  
Flight Stairs  
Furnware Dorset Pty Ltd  
Ground Control  
Harris Hobbs Landscapes  
Haymes Paint  
Hoods Carpet Court  
Irwin & Hartshorn  
JMC Masonry  
Kitchen Link  
Land Development Agency  
Lupo Concrete pumping  
M & M Welding  
Mastaflow Plumbing Service  
Masters Builders Association of the ACT  
Master Builders Fidelity Fund  
Meyer Vandenberg

Mi Tek  
Moraschi Roofing  
Omni Interiors  
Pacific Stone  
Paint Place  
Peter Blackshaw Manuka  
Prestige Scaffolding Services  
Professional Plaster Lining (PPL)  
Regency  
Renaissance Homes  
Sellick Consultants  
Southern Plumbing Plus  
TileFlair  
Anthony Quinn Surveys  
Toscan Glass  
W R Moore Bobcat Hire  
Wilson and Bradley  
WIN Electrics  
Win TV  
WK Marble and Granite

## Project Partners



renaissancehomes  
[www.renhomes.net.au](http://www.renhomes.net.au)

## Media Partners

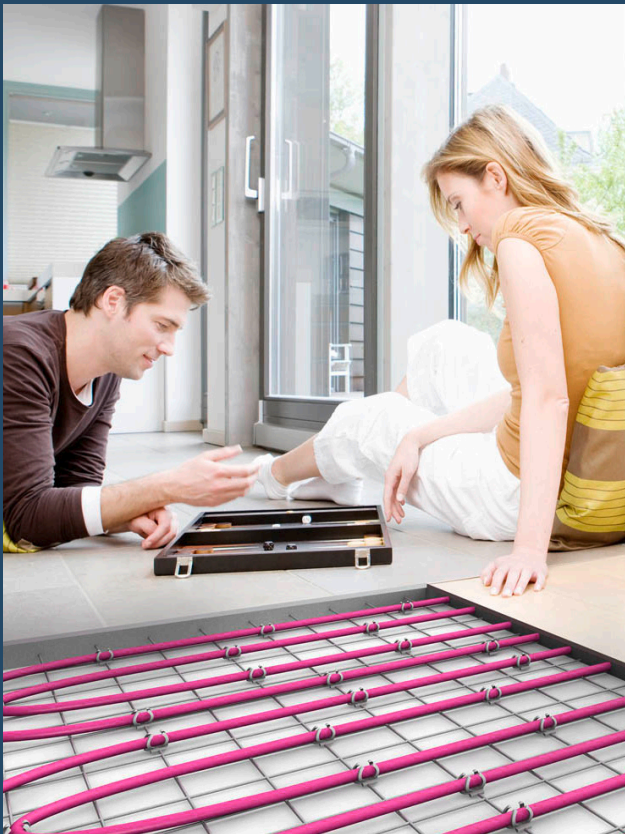


Canberra Weekly





**HYDRONIC HEATING  
SYSTEMS**



# HYDRONIC HEATING SYSTEMS

**DOMESTIC • COMMERCIAL • INDUSTRIAL**

- ☐ HYDRONIC FLOOR HEATING AND COOLING
- ☐ HYDRONIC RADIATOR HEATING TOWEL RAILS
- ☐ SOLAR HYDRONIC HEATING AND HOT WATER
- ☐ HEAT PUMPS AIR TO WATER AND GEOTHERMAL
- ☐ GAS FIRED
- ☐ SOLID FUEL

• **Some of our recent major projects include:**

- **AIS Student Accommodation**  
Floor heating and cooling system
- **Burgmann Anglican School - 6 buildings**  
Floor heating system
- **Canberra Airport Hangars and Offices**  
Floor heating and cooling system
- **3-5 National Circuit Canberra**  
Floor heating system
- **Allowah Hospital Sydney**  
Floor heating and cooling system



**RAINER** 0419 428 496  
**CANBERRA** 6255 6881

**KARL** 0418 690 622  
**WODONGA** 02 6024 4628

**EMAIL** [branco@branco.com.au](mailto:branco@branco.com.au)

**WEBSITE** [www.branco.com.au](http://www.branco.com.au)



MONARCH BUILDING SOLUTIONS PROUDLY PRESENTS

# SCHLICH/HAUS

## YARRALUMLA



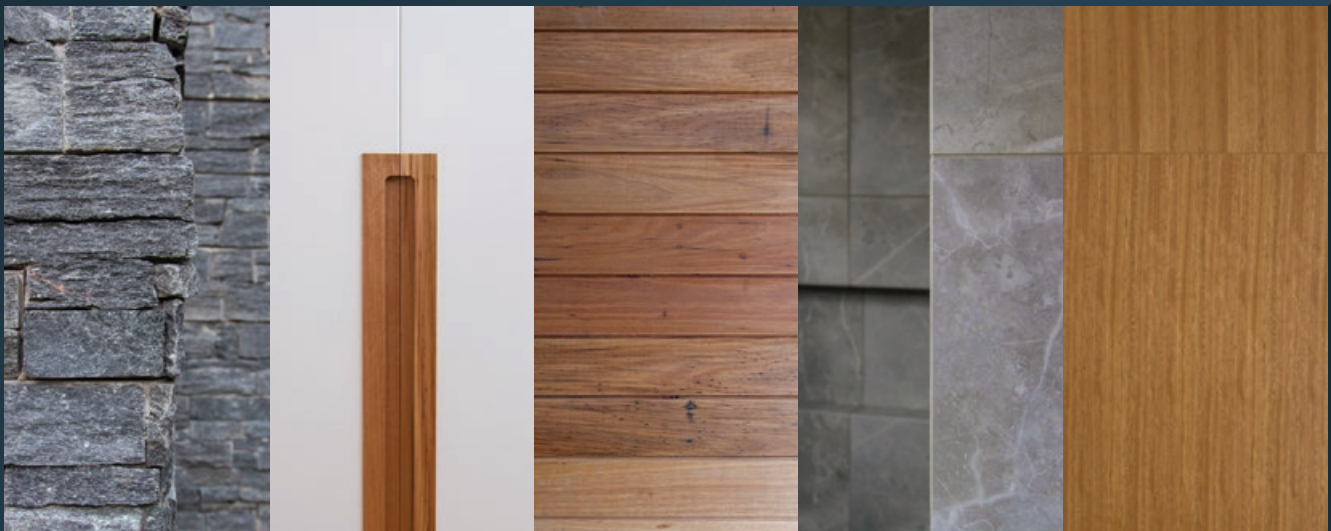
In 2010 we launched our first display home. It was designed to showcase Monarch's broad ranging construction abilities and exacting attention to detail. It won four prestigious Excellence in Building Awards, including National Display Home of the Year.



Now, in 2016, with the launch of our **SCHLICH/HAUS** display home, Monarch has once again raised expectations and redefined luxury residential living.



These images highlight the warmth and richness of the materials used.

If you would like to arrange a private viewing of the property with one of our directors, please call or email Chelsea to make an appointment.



[monarchdisplay.com](http://monarchdisplay.com)

T 02 6162 0232 | [chelsea@monarchbuildingsolutions.com.au](mailto:chelsea@monarchbuildingsolutions.com.au)

 @monarch.cbr | Find us on  | ACT LIC BUILDER 200697

ACN: 115 347 969